

**Anti-Adiponectin Antibody (aa19-244, clone 2C9)**  
**Mouse Anti Human Monoclonal Antibody**  
**Catalog # ALS17318****Specification**

---

**Anti-Adiponectin Antibody (aa19-244, clone 2C9) - Product Information**

Application	IHC-P
Primary Accession	<a href="#">Q15848</a>
Predicted	Human
Host	Mouse
Clonality	Monoclonal
Isotype	IgG1
Calculated MW	26414

**Anti-Adiponectin Antibody (aa19-244, clone 2C9) - Additional Information****Gene ID** 9370**Alias Symbol** **ADIPOQ****Other Names**

ADIPOQ, Adiponectin, ADPN, ACDC, ADIPQTL1, APM-1, APM1, ACRP30, Gelatin-binding protein 28, GBP28, Gelatin-binding protein

**Target/Specificity**

Human Adiponectin

**Reconstitution & Storage**

PBS, pH 7.3, 1% BSA, 50% glycerol, 0.02% sodium azide Store at -20°C. Minimize freezing and thawing.

**Precautions**

Anti-Adiponectin Antibody (aa19-244, clone 2C9) is for research use only and not for use in diagnostic or therapeutic procedures.

**Anti-Adiponectin Antibody (aa19-244, clone 2C9) - Protein Information****Name** ADIPOQ**Function**

Important adipokine involved in the control of fat metabolism and insulin sensitivity, with direct anti-diabetic, anti-atherogenic and anti-inflammatory activities. Stimulates AMPK phosphorylation and activation in the liver and the skeletal muscle, enhancing glucose utilization and fatty-acid combustion. Antagonizes TNF-alpha by negatively regulating its expression in various tissues such as liver and macrophages, and also by counteracting its effects. Inhibits endothelial NF-kappa-B signaling through a cAMP-dependent pathway. May play a role in cell growth, angiogenesis and tissue remodeling by binding and sequestering various growth factors with distinct binding affinities, depending on the type of complex, LMW, MMW or HMW.

**Cellular Location**

Secreted.

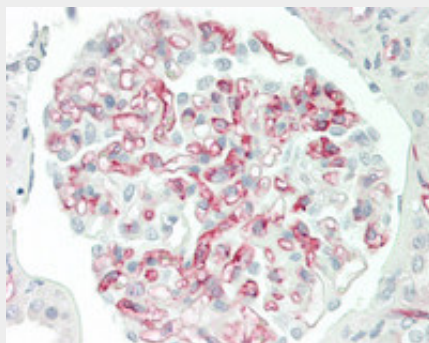
**Tissue Location**

Synthesized exclusively by adipocytes and secreted into plasma.

**Anti-Adiponectin Antibody (aa19-244, clone 2C9) - Protocols**

Provided below are standard protocols that you may find useful for product applications.

- [Western Blot](#)
- [Blocking Peptides](#)
- [Dot Blot](#)
- [Immunohistochemistry](#)
- [Immunofluorescence](#)
- [Immunoprecipitation](#)
- [Flow Cytometry](#)
- [Cell Culture](#)

**Anti-Adiponectin Antibody (aa19-244, clone 2C9) - Images**

Human Kidney: Formalin-Fixed, Paraffin-Embedded (FFPE)