

Anti-FKSG80 / GPR81 Antibody (Cytoplasmic Domain)
Rabbit Anti Human Polyclonal Antibody
Catalog # ALS17319**Specification**

Anti-FKSG80 / GPR81 Antibody (Cytoplasmic Domain) - Product Information

Application	IHC-P
Primary Accession	Q9BXC0
Predicted	Human, Monkey
Host	Rabbit
Clonality	Polyclonal
Calculated MW	39295

Anti-FKSG80 / GPR81 Antibody (Cytoplasmic Domain) - Additional Information**Gene ID** 27198**Alias Symbol** **HCAR1****Other Names**

HCAR1, FKSG80, G protein-coupled receptor 81, G-protein coupled receptor 104, G protein-coupled receptor 104, G-protein coupled receptor 81, GPR81, GPR104, LACR1, HCA1, TA-GPCR, Lactate receptor 1

Target/Specificity

Human GPR81. BLAST analysis of the peptide immunogen showed no homology with other human proteins.

Reconstitution & Storage

PBS, less than 0.1% sodium azide. Aliquot and store undiluted at -20°C or below for up to 1 year. Can be stored undiluted at 4°C for up to 1 month. Avoid freeze thaw cycles.

Precautions

Anti-FKSG80 / GPR81 Antibody (Cytoplasmic Domain) is for research use only and not for use in diagnostic or therapeutic procedures.

Anti-FKSG80 / GPR81 Antibody (Cytoplasmic Domain) - Protein Information**Name** HCAR1**Synonyms** GPR104, GPR81, HCA1**Function**

Acts as a receptor for L-lactate and mediates its anti-lipolytic effect through a G(i)-protein-mediated pathway.

Cellular Location

Cell membrane; Multi-pass membrane protein.

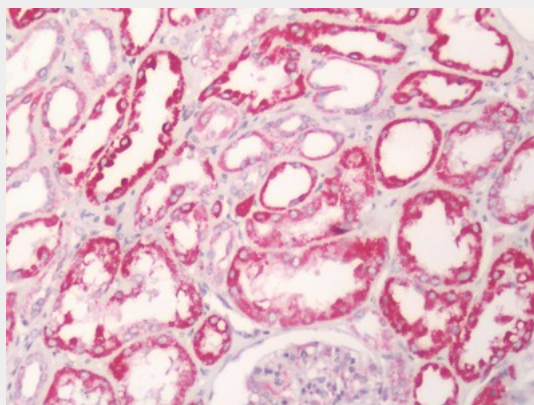
Tissue Location

Expressed abundantly in brown and white fat. It also detectable at lower levels in liver, kidney, skeletal muscle, brain and pituitary. Not detected in frontal, temporal and occipital lobes of the cortex, basal forebrain, caudate nucleus, nucleus accumbens and hippocampus.

Anti-FKSG80 / GPR81 Antibody (Cytoplasmic Domain) - Protocols

Provided below are standard protocols that you may find useful for product applications.

- [Western Blot](#)
- [Blocking Peptides](#)
- [Dot Blot](#)
- [Immunohistochemistry](#)
- [Immunofluorescence](#)
- [Immunoprecipitation](#)
- [Flow Cytometry](#)
- [Cell Culture](#)

Anti-FKSG80 / GPR81 Antibody (Cytoplasmic Domain) - Images

Human Kidney: Formalin-Fixed, Paraffin-Embedded (FFPE)