

Anti-HAMP / Hepcidin Antibody
Rabbit Anti Human Polyclonal Antibody
Catalog # ALS17322**Specification**

Anti-HAMP / Hepcidin Antibody - Product Information

Application	IHC-P
Primary Accession	P81172
Predicted	Human
Host	Rabbit
Clonality	Polyclonal
Calculated MW	9408

Anti-HAMP / Hepcidin Antibody - Additional Information**Gene ID** 57817**Alias Symbol** HAMP**Other Names**

HAMP, Hepcidin antimicrobial peptide, LEAP-1, LEAP1, HEPC, Hepcidin, HFE2B, PLTR, Putative liver tumor regressor

Target/Specificity

Human HAMP / Hepcidin

Reconstitution & Storage

PBS, 0.1% sodium azide, 50% glycerol Store at 4°C short term. Aliquot and store at -20°C long term. Avoid freeze-thaw cycles.

Precautions

Anti-HAMP / Hepcidin Antibody is for research use only and not for use in diagnostic or therapeutic procedures.

Anti-HAMP / Hepcidin Antibody - Protein Information**Name** HAMP ([HGNC:15598](#))**Synonyms** HEPC, LEAP1**Function**

Liver-produced hormone that constitutes the main circulating regulator of iron absorption and distribution across tissues. Acts by promoting endocytosis and degradation of ferroportin/SLC40A1, leading to the retention of iron in iron-exporting cells and decreased flow of iron into plasma (PubMed: [22682227](http://www.uniprot.org/citations/22682227), PubMed: [29237594](http://www.uniprot.org/citations/29237594), PubMed: [32814342](http://www.uniprot.org/citations/32814342)). Controls the major flows of iron into plasma: absorption of dietary iron in the intestine, recycling of iron by macrophages, which phagocytose old erythrocytes and other cells, and mobilization of

stored iron from hepatocytes (PubMed:22306005).

Cellular Location

Secreted.

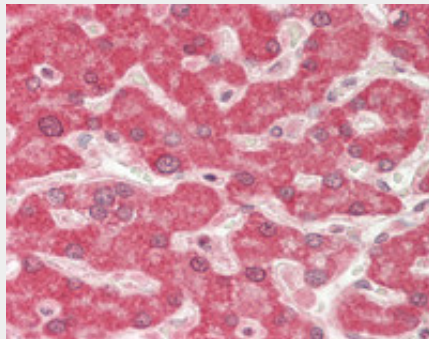
Tissue Location

Highest expression in liver and to a lesser extent in heart and brain. Low levels in lung, tonsils, salivary gland, trachea, prostate gland, adrenal gland and thyroid gland. Secreted into the urine and blood (PubMed:11034317). Expressed by hepatocytes (PubMed:15124018).

Anti-HAMP / Hepcidin Antibody - Protocols

Provided below are standard protocols that you may find useful for product applications.

- [Western Blot](#)
- [Blocking Peptides](#)
- [Dot Blot](#)
- [Immunohistochemistry](#)
- [Immunofluorescence](#)
- [Immunoprecipitation](#)
- [Flow Cytometry](#)
- [Cell Culture](#)

Anti-HAMP / Hepcidin Antibody - Images

Human Liver: Formalin-Fixed, Paraffin-Embedded (FFPE)