

Anti-ACTA2 / Smooth Muscle Actin Antibody
Goat anti Human Polyclonal Antibody
Catalog # ALS18632**Specification**

Anti-ACTA2 / Smooth Muscle Actin Antibody - Product Information

Primary Accession	P62736
Reactivity	Human
Predicted	Mouse, Rat, Rabbit, Hamster, Monkey, Chicken, Bovine, Dog
Host	Ga
Clonality	Polyclonal

Anti-ACTA2 / Smooth Muscle Actin Antibody - Additional Information**Gene ID 59**Alias Symbol **ACTA2****Other Names**

ACTA2 Antibody, ACTVS Antibody, Alpha-actin-2 Antibody, Alpha-cardiac actin Antibody, AAT6 Antibody, Actin, aortic smooth muscle Antibody, ACTSA Antibody, Smooth Muscle Actin Antibody, MYMY5 Antibody

Target/Specificity

Human ACTA2. Variants NP_001604.1 and NP_001135417.1 encode the same protein.

Format

Tris-buffered saline, pH 7.3, 0.5% BSA, 0.02% sodium azide

Reconstitution & Storage

Store at -20°C. Minimize freezing and thawing.

Precautions

Anti-ACTA2 / Smooth Muscle Actin Antibody is for research use only and not for use in diagnostic or therapeutic procedures.

Anti-ACTA2 / Smooth Muscle Actin Antibody - Protein Information**Name** ACTA2**Synonyms** ACTSA, ACTVS**Function**

Actins are highly conserved proteins that are involved in various types of cell motility and are ubiquitously expressed in all eukaryotic cells.

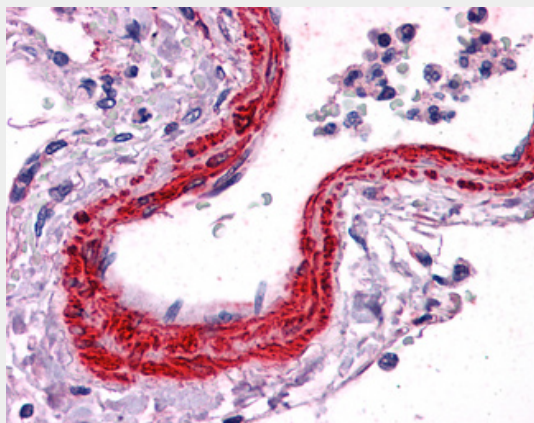
Cellular Location

Cytoplasm, cytoskeleton.

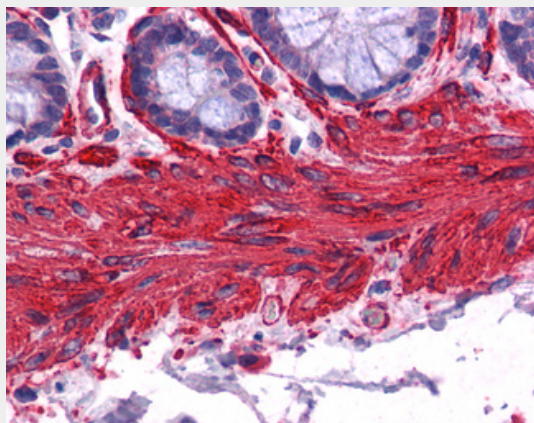
Volume
Array**Anti-ACTA2 / Smooth Muscle Actin Antibody - Protocols**

Provided below are standard protocols that you may find useful for product applications.

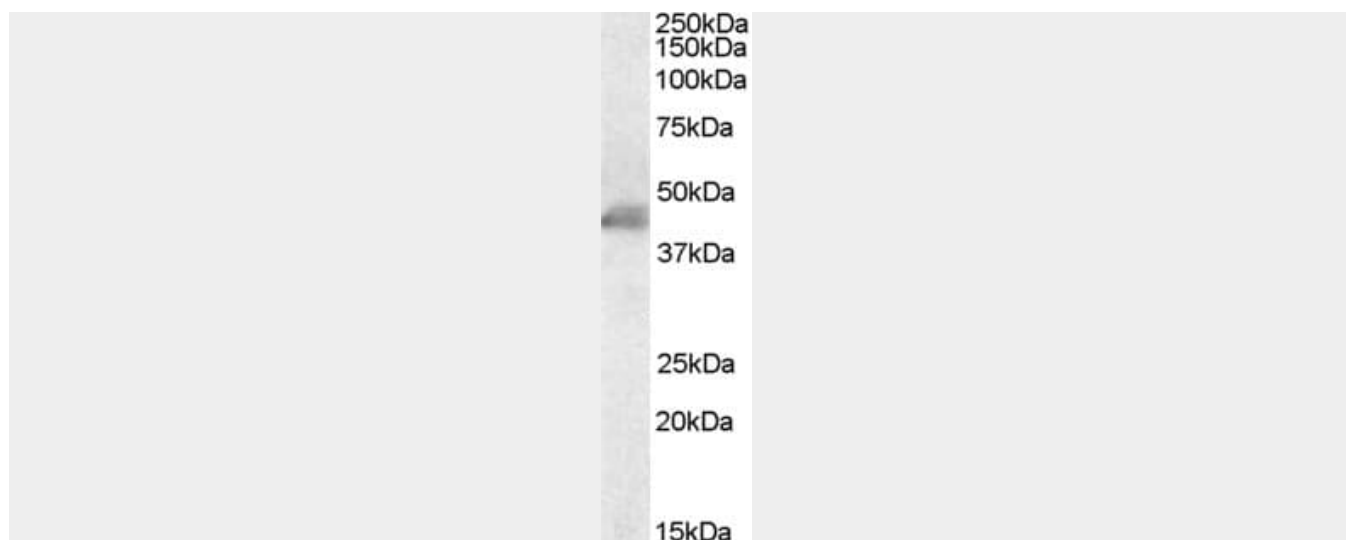
- [Western Blot](#)
- [Blocking Peptides](#)
- [Dot Blot](#)
- [Immunohistochemistry](#)
- [Immunofluorescence](#)
- [Immunoprecipitation](#)
- [Flow Cytometry](#)
- [Cell Culture](#)

Anti-ACTA2 / Smooth Muscle Actin Antibody - Images

Anti-ACTA2 antibody IHC of human vessel. Immunohistochemistry of formalin-fixed, paraffin-embedded tissue after heat-induced antigen retrieval. Antibody LS-B3933 concentration 2.5 ug/ml.



Anti-ACTA2 antibody IHC of human colon, smooth muscle. Immunohistochemistry of formalin-fixed, paraffin-embedded tissue after heat-induced antigen retrieval. Antibody LS-B3933 concentration 2.5 ug/ml.



Antibody staining (0.1 ug/ml) of Human Duodenum lysate (RIPA buffer, 35 ug total protein per lane). Primary incubated for 1 hour. Detected by Western blot of chemiluminescence.