

**H1L Antibody**  
**Purified Mouse Monoclonal Antibody (Mab)**  
**Catalog # AM1012a****Specification**

---

**H1L Antibody - Product Information**

Application	WB,E
Primary Accession	<a href="#">P20495</a>
Reactivity	Vaccinia Virus
Host	Mouse
Clonality	Monoclonal
Isotype	IgG2a

**H1L Antibody - Additional Information****Other Names**

Dual specificity protein phosphatase H1, 313-, Late protein H1, H1L, OPG106

**Target/Specificity**

Purified recombinant H1L fusion protein was used to produced this monoclonal antibody.

**Dilution**

WB~~1:500

E~~Use at an assay dependent concentration.

**Format**

Purified monoclonal antibody supplied in PBS with 0.09% (W/V) sodium azide. This antibody is purified through a protein G column, followed by dialysis against PBS.

**Storage**

Maintain refrigerated at 2-8°C for up to 2 weeks. For long term storage store at -20°C in small aliquots to prevent freeze-thaw cycles.

**Precautions**

H1L Antibody is for research use only and not for use in diagnostic or therapeutic procedures.

**H1L Antibody - Protein Information****Name** OPG106

**Function** Serine/tyrosine phosphatase which down-regulates cellular antiviral response by dephosphorylating activated host STAT1 and blocking interferon (IFN)-stimulated innate immune responses. Dephosphorylates the OPG144 protein.

**Cellular Location**

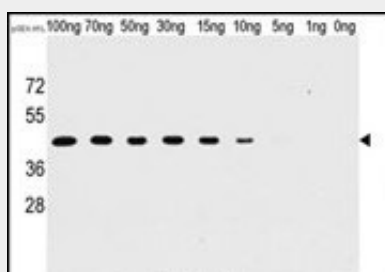
Virion {ECO:0000250|UniProtKB:P07239}. Host cytoplasm {ECO:0000250|UniProtKB:P07239}. Note=Approximately 200 molecules of OPG106 are packaged within the virion and are essential for the viability of the virus. {ECO:0000250|UniProtKB:P07239}

## H1L Antibody - Protocols

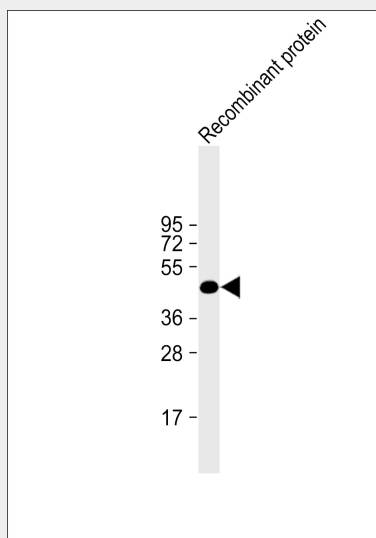
Provided below are standard protocols that you may find useful for product applications.

- [Western Blot](#)
- [Blocking Peptides](#)
- [Dot Blot](#)
- [Immunohistochemistry](#)
- [Immunofluorescence](#)
- [Immunoprecipitation](#)
- [Flow Cytometry](#)
- [Cell Culture](#)

## H1L Antibody - Images



Western blot analysis of anti-H1L Mab in recombinant pGEX-H1L protein. H1L(arrow) was detected using the purified Mab.



"Anti-H1L Antibody at 1:500 dilution + recombinant protein whole cell lysate Secondary Goat Anti-mouse IgG, (H+L), Peroxidase conjugated at 1/10000 dilution. Predicted band size : 19672 Da Blocking/Dilution buffer: 5% NFDM/TBST."

## H1L Antibody - Background

This Protein shows activity toward tyrosine-protein phosphate as well as with serine-protein phosphate.

## H1L Antibody - References

Goebel S.J., Virology 179:247-266(1990). Goebel S.J., Virology 179:517-563(1990).