

**SPA9 Antibody (N-term)**  
**Mouse Monoclonal Antibody (Mab)**  
**Catalog # AM1826b****Specification**

---

**SPA9 Antibody (N-term) - Product Information**

Application	WB,E
Primary Accession	<a href="#">Q86WD7</a>
Reactivity	Human
Host	Mouse
Clonality	Monoclonal
Isotype	IgM,K
Calculated MW	46557
Antigen Region	158-186

**SPA9 Antibody (N-term) - Additional Information****Gene ID** 327657**Other Names**

SerpA9, Centerin, Germinal center B-cell-expressed transcript 1 protein, SERPINA9, GCET1, SERPINA11

**Target/Specificity**

This SPA9 antibody is generated from mice immunized with a KLH conjugated synthetic peptide between 158-186 amino acids from the N-terminal region of human SPA9.

**Dilution**

WB~~1:500~1000

E~~Use at an assay dependent concentration.

**Format**

Purified monoclonal antibody supplied in PBS with 0.09% (W/V) sodium azide. This antibody is purified through a protein G column, followed by dialysis against PBS.

**Storage**

Maintain refrigerated at 2-8°C for up to 2 weeks. For long term storage store at -20°C in small aliquots to prevent freeze-thaw cycles.

**Precautions**

SPA9 Antibody (N-term) is for research use only and not for use in diagnostic or therapeutic procedures.

**SPA9 Antibody (N-term) - Protein Information****Name** SERPINA9**Synonyms** GCET1, SERPINA11

**Function** Protease inhibitor that inhibits trypsin and trypsin-like serine proteases (in vitro). Inhibits plasmin and thrombin with lower efficiency (in vitro).

**Cellular Location**

[Isoform 1]: Secreted. [Isoform 3]: Cytoplasm. [Isoform 5]: Cytoplasm. [Isoform 7]: Membrane; Single-pass type II membrane protein

**Tissue Location**

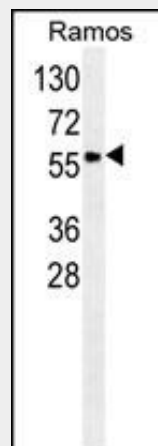
Highly expressed in normal germinal center (GC) B- cells and GC B-cell-derived malignancies.

**SPA9 Antibody (N-term) - Protocols**

Provided below are standard protocols that you may find useful for product applications.

- [Western Blot](#)
- [Blocking Peptides](#)
- [Dot Blot](#)
- [Immunohistochemistry](#)
- [Immunofluorescence](#)
- [Immunoprecipitation](#)
- [Flow Cytometry](#)
- [Cell Culture](#)

**SPA9 Antibody (N-term) - Images**



SPA9 Antibody (N-term) (Cat. #AM1826b) western blot analysis in Ramos cell line lysates (35µg/lane). This demonstrates the SPA9 antibody detected the SPA9 protein (arrow).

**SPA9 Antibody (N-term) - References**

Genome sequence of *Shigella flexneri* 2a: insights into pathogenicity through comparison with genomes of *Escherichia coli* K12 and O157. Jin Q, et al. *Nucleic Acids Res*, 2002 Oct 15. PMID 12384590.

The virulence plasmid pWR100 and the repertoire of proteins secreted by the type III secretion apparatus of *Shigella flexneri*. Buchrieser C, et al. *Mol Microbiol*, 2000 Nov. PMID 11115111.

Eight genes in region 5 that form an operon are essential for invasion of epithelial cells by *Shigella flexneri* 2a. Sasakawa C, et al. *J Bacteriol*, 1993 Apr. PMID 8385666.

Surface presentation of *Shigella flexneri* invasion plasmid antigens requires the products of the spa locus. Venkatesan MM, et al. *J Bacteriol*, 1992 Mar. PMID 1312536.