

**RPS6KB2 Antibody**  
**Mouse Monoclonal Antibody (Mab)**  
**Catalog # AM1854b**

**Specification**

---

**RPS6KB2 Antibody - Product Information**

Application	WB,E
Primary Accession	<a href="#">O9UBS0</a>
Other Accession	<a href="#">NP_003943.2</a>
Reactivity	Human, Mouse
Host	Mouse
Clonality	Monoclonal
Isotype	IgG1,K
Calculated MW	53455

**RPS6KB2 Antibody - Additional Information**

**Gene ID** 6199

**Other Names**

Ribosomal protein S6 kinase beta-2, S6K-beta-2, S6K2, 70 kDa ribosomal protein S6 kinase 2, P70S6K2, p70-S6K 2, S6 kinase-related kinase, SRK, Serine/threonine-protein kinase 14B, p70 ribosomal S6 kinase beta, S6K-beta, p70 S6 kinase beta, p70 S6K-beta, p70 S6KB, p70-beta, RPS6KB2, STK14B

**Target/Specificity**

This RPS6KB2 monoclonal antibody is generated from mouse immunized with RPS6KB2 recombinant protein.

**Dilution**

WB~~1:1000  
E~~Use at an assay dependent concentration.

**Format**

Purified monoclonal antibody supplied in PBS with 0.09% (W/V) sodium azide. This antibody is purified through a protein G column, eluted with high and low pH buffers and neutralized immediately, followed by dialysis against PBS.

**Storage**

Maintain refrigerated at 2-8°C for up to 2 weeks. For long term storage store at -20°C in small aliquots to prevent freeze-thaw cycles.

**Precautions**

RPS6KB2 Antibody is for research use only and not for use in diagnostic or therapeutic procedures.

**RPS6KB2 Antibody - Protein Information**

**Name** RPS6KB2

## Synonyms STK14B

**Function** Phosphorylates specifically ribosomal protein S6 (PubMed:[29750193](#)). Seems to act downstream of mTOR signaling in response to growth factors and nutrients to promote cell proliferation, cell growth and cell cycle progression in an alternative pathway regulated by MEAK7 (PubMed:[29750193](#)).

## Cellular Location

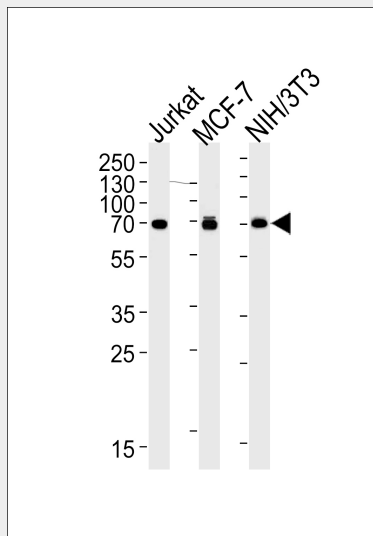
Cytoplasm. Nucleus.

## RPS6KB2 Antibody - Protocols

Provided below are standard protocols that you may find useful for product applications.

- [Western Blot](#)
- [Blocking Peptides](#)
- [Dot Blot](#)
- [Immunohistochemistry](#)
- [Immunofluorescence](#)
- [Immunoprecipitation](#)
- [Flow Cytometry](#)
- [Cell Culture](#)

## RPS6KB2 Antibody - Images



RPS6KB2 Antibody (Cat.# AM1854b) western blot analysis in Jurkat, MCF-7, mouse NIH/3T3 cell lysates (35µg/lane). This demonstrates that the RPS6KB2 antibody detected RPS6KB2 protein (arrow).

## RPS6KB2 Antibody - Background

Phosphorylates specifically ribosomal protein S6.