

**MCFD2 Antibody**  
**Mouse Monoclonal Antibody (Mab)**  
**Catalog # AM1856b****Specification**

---

**MCFD2 Antibody - Product Information**

Application	WB,E
Primary Accession	<a href="#">O8NI22</a>
Other Accession	<a href="#">NP_001164977.1</a>
Reactivity	Human
Host	Mouse
Clonality	Monoclonal
Isotype	IgG1,K

**MCFD2 Antibody - Additional Information****Gene ID** 90411**Other Names**

Multiple coagulation factor deficiency protein 2, Neural stem cell-derived neuronal survival protein, MCFD2, SDNSF

**Target/Specificity**

This MCFD2 monoclonal antibody is generated from mouse immunized with MCFD2 recombinant protein.

**Dilution**

WB~~1:500

E~~Use at an assay dependent concentration.

**Format**

Purified monoclonal antibody supplied in PBS with 0.09% (W/V) sodium azide. This antibody is purified through a protein G column, followed by dialysis against PBS.

**Storage**

Maintain refrigerated at 2-8°C for up to 2 weeks. For long term storage store at -20°C in small aliquots to prevent freeze-thaw cycles.

**Precautions**

MCFD2 Antibody is for research use only and not for use in diagnostic or therapeutic procedures.

**MCFD2 Antibody - Protein Information****Name** MCFD2**Synonyms** SDNSF**Function** The MCFD2-LMAN1 complex forms a specific cargo receptor for the ER-to-Golgi transport

of selected proteins. Plays a role in the secretion of coagulation factors.

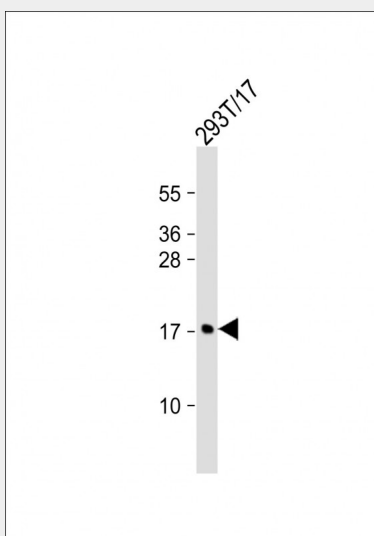
**Cellular Location**

Endoplasmic reticulum-Golgi intermediate compartment. Endoplasmic reticulum. Golgi apparatus

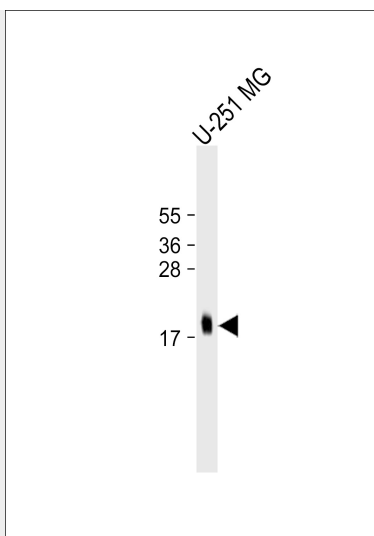
**MCFD2 Antibody - Protocols**

Provided below are standard protocols that you may find useful for product applications.

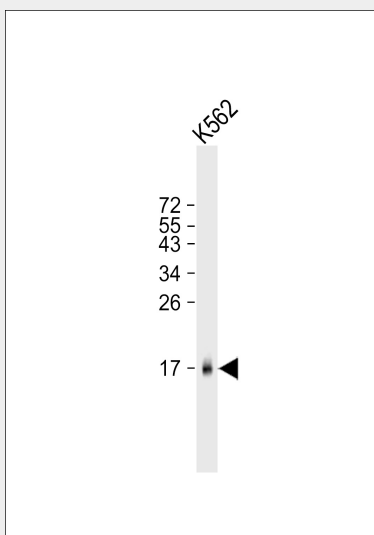
- [Western Blot](#)
- [Blocking Peptides](#)
- [Dot Blot](#)
- [Immunohistochemistry](#)
- [Immunofluorescence](#)
- [Immunoprecipitation](#)
- [Flow Cytometry](#)
- [Cell Culture](#)

**MCFD2 Antibody - Images**

Anti-MCFD2 Antibody at 1:1000 dilution + 293T/17 whole cell lysate Lysates/proteins at 20 µg per lane. Secondary Goat Anti-mouse IgG, (H+L), Peroxidase conjugated at 1/10000 dilution. Predicted band size : 16 kDa Blocking/Dilution buffer: 5% NFDM/TBST.



"Anti-MCFD2 Antibody at 1:1000 dilution + U-251 MG whole cell lysate Secondary Goat Anti-mouse IgG, (H+L), Peroxidase conjugated at 1/10000 dilution. Predicted band size : 16390 Da Blocking/Dilution buffer: 5% NFDM/TBST."



"Anti-MCFD2 Antibody at 1:500 dilution + K562 whole cell lysate Secondary Goat Anti-mouse IgG, (H+L), Peroxidase conjugated at 1/10000 dilution. Predicted band size : 16390 Da Blocking/Dilution buffer: 5% NFDM/TBST."

### **MCFD2 Antibody - Background**

The MCFD2-LMAN1 complex forms a specific cargo receptor for the ER-to-Golgi transport of selected proteins. Plays a role in the secretion of coagulation factors.