

MIPEP Antibody
Mouse Monoclonal Antibody (Mab)
Catalog # AM1857b**Specification**

MIPEP Antibody - Product Information

Application	WB,E
Primary Accession	Q99797
Other Accession	NP_005923.2
Reactivity	Human
Host	Mouse
Clonality	Monoclonal
Isotype	IgG1,K
Calculated MW	80641

MIPEP Antibody - Additional Information**Gene ID** 4285**Other Names**

Mitochondrial intermediate peptidase, MIP, MIPEP, MIP

Target/Specificity

This MIPEP monoclonal antibody is generated from mouse immunized with MIPEP recombinant protein.

Dilution

WB~~1:100~1000

E~~Use at an assay dependent concentration.

Format

Purified monoclonal antibody supplied in PBS with 0.09% (W/V) sodium azide. This antibody is purified through a protein G column, followed by dialysis against PBS.

Storage

Maintain refrigerated at 2-8°C for up to 2 weeks. For long term storage store at -20°C in small aliquots to prevent freeze-thaw cycles.

Precautions

MIPEP Antibody is for research use only and not for use in diagnostic or therapeutic procedures.

MIPEP Antibody - Protein Information**Name** MIPEP**Synonyms** MIP**Function** Cleaves proteins, imported into the mitochondrion, to their mature size.

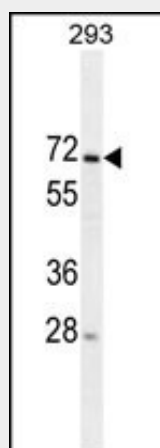
Cellular Location
Mitochondrion matrix.

MIPEP Antibody - Protocols

Provided below are standard protocols that you may find useful for product applications.

- [Western Blot](#)
- [Blocking Peptides](#)
- [Dot Blot](#)
- [Immunohistochemistry](#)
- [Immunofluorescence](#)
- [Immunoprecipitation](#)
- [Flow Cytometry](#)
- [Cell Culture](#)

MIPEP Antibody - Images



MIPEP Antibody (Cat. #AM1857b) western blot analysis in 293 cell line lysates (35µg/lane). This demonstrates the MIPEP antibody detected the MIPEP protein (arrow).

MIPEP Antibody - Background

Cleaves proteins, imported into the mitochondrion, to their mature size.