

**CDCA8 Antibody**  
**Mouse Monoclonal Antibody (Mab)**  
**Catalog # AM1868b****Specification**

---

**CDCA8 Antibody - Product Information**

Application	WB,E
Primary Accession	<a href="#">Q53HL2</a>
Other Accession	<a href="#">NP_060571.1</a>
Reactivity	Human
Host	Mouse
Clonality	Monoclonal
Isotype	IgG1,K
Calculated MW	31323

**CDCA8 Antibody - Additional Information****Gene ID** 55143**Other Names**

Borealin, Cell division cycle-associated protein 8, Dasra-B, hDasra-B, Pluripotent embryonic stem cell-related gene 3 protein, CDCA8, PESCRG3

**Target/Specificity**

This CDCA8 monoclonal antibody is generated from mouse immunized with CDCA8 recombinant protein.

**Dilution**

WB~~1:500~1000

E~~Use at an assay dependent concentration.

**Format**

Purified monoclonal antibody supplied in PBS with 0.09% (W/V) sodium azide. This antibody is purified through a protein G column, followed by dialysis against PBS.

**Storage**

Maintain refrigerated at 2-8°C for up to 2 weeks. For long term storage store at -20°C in small aliquots to prevent freeze-thaw cycles.

**Precautions**

CDCA8 Antibody is for research use only and not for use in diagnostic or therapeutic procedures.

**CDCA8 Antibody - Protein Information****Name** CDCA8**Synonyms** PESCRG3

**Function** Component of the chromosomal passenger complex (CPC), a complex that acts as a key regulator of mitosis. The CPC complex has essential functions at the centromere in ensuring correct chromosome alignment and segregation and is required for chromatin-induced microtubule stabilization and spindle assembly. Major effector of the TTK kinase in the control of attachment-error-correction and chromosome alignment.

#### Cellular Location

Nucleus, nucleolus. Cytoplasm. Cytoplasm, cytoskeleton, spindle. Chromosome, centromere.

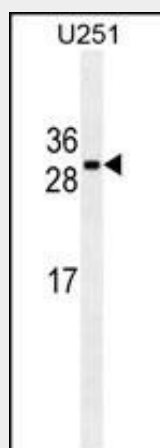
Note=Localizes on chromosome arms and inner centromeres from prophase through metaphase and then transferring to the spindle midzone and midbody from anaphase through cytokinesis  
Colocalizes with SENP3 in the nucleolus in interphase cells

### CDCA8 Antibody - Protocols

Provided below are standard protocols that you may find useful for product applications.

- [Western Blot](#)
- [Blocking Peptides](#)
- [Dot Blot](#)
- [Immunohistochemistry](#)
- [Immunofluorescence](#)
- [Immunoprecipitation](#)
- [Flow Cytometry](#)
- [Cell Culture](#)

### CDCA8 Antibody - Images



CDCA8 Antibody (Cat. #AM1868b) western blot analysis in U251 cell line lysates (35µg/lane). This demonstrates the CDCA8 antibody detected the CDCA8 protein (arrow).

### CDCA8 Antibody - Background

CDCA8 is a component of a chromosomal passenger complex required for stability of the bipolar mitotic spindle (Gassmann et al., 2004 [PubMed 15249581]).

### CDCA8 Antibody - References

Bourhis, E., et al. Biochemistry 48(29):6783-6793(2009)  
Zhang, Q., et al. Mol. Biol. Rep. 36(3):603-609(2009)

Klein, U.R., et al. Mol. Biol. Cell 20(1):410-418(2009)  
Xia, F., et al. Mol. Cell. Biol. 28(17):5299-5311(2008)  
Jelluma, N., et al. Cell 132(2):233-246(2008)