

**NLRP12 Antibody**  
**Mouse Monoclonal Antibody (Mab)**  
**Catalog # AM1894b****Specification**

---

**NLRP12 Antibody - Product Information**

Application	WB,E
Primary Accession	<a href="#">P59046</a>
Other Accession	<a href="#">NP_150639.1</a> , <a href="#">NP_653288.1</a>
Reactivity	Mouse
Host	Mouse
Clonality	Monoclonal
Isotype	IgM,K
Calculated MW	120173

**NLRP12 Antibody - Additional Information****Gene ID** 91662**Other Names**

NACHT, LRR and PYD domains-containing protein 12, Monarch-1, PYRIN-containing APAF1-like protein 7, Regulated by nitric oxide, NLRP12, NALP12, PYPAF7, RNO

**Target/Specificity**

This NLRP12 monoclonal antibody is generated from mouse immunized with NLRP12 recombinant protein.

**Dilution**

WB~~1:500~1500

E~~Use at an assay dependent concentration.

**Format**

Purified polyclonal antibody supplied in PBS with 0.09% (W/V) sodium azide. This antibody is prepared by Saturated Ammonium Sulfate (SAS) precipitation followed by dialysis against PBS.

**Storage**

Maintain refrigerated at 2-8°C for up to 2 weeks. For long term storage store at -20°C in small aliquots to prevent freeze-thaw cycles.

**Precautions**

NLRP12 Antibody is for research use only and not for use in diagnostic or therapeutic procedures.

**NLRP12 Antibody - Protein Information****Name** NLRP12**Synonyms** NALP12, PYPAF7, RNO

**Function** Plays an essential role as an potent mitigator of inflammation (PubMed:[30559449](#)). Primarily expressed in dendritic cells and macrophages, inhibits both canonical and non-canonical NF-kappa-B and ERK activation pathways (PubMed:[15489334](#), PubMed:[17947705](#)). Functions as a negative regulator of NOD2 by targeting it to degradation via the proteasome pathway (PubMed:[30559449](#)). In turn, promotes bacterial tolerance (PubMed:[30559449](#)). Also inhibits the RIGI- mediated immune signaling against RNA viruses by reducing the E3 ubiquitin ligase TRIM25-mediated 'Lys-63'-linked RIGI activation but enhancing the E3 ubiquitin ligase RNF125-mediated 'Lys-48'-linked RIGI degradation (PubMed:[30902577](#)). Also acts as a negative regulator of inflammatory response to mitigate obesity and obesity-associated diseases in adipose tissue (By similarity).

#### Cellular Location

Cytoplasm.

#### Tissue Location

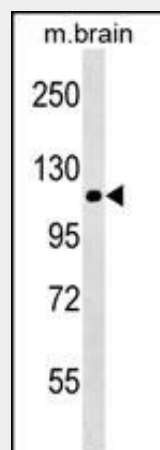
Detected only in peripheral blood leukocytes, predominantly in eosinophils and granulocytes, and at lower levels in monocytes.

### NLRP12 Antibody - Protocols

Provided below are standard protocols that you may find useful for product applications.

- [Western Blot](#)
- [Blocking Peptides](#)
- [Dot Blot](#)
- [Immunohistochemistry](#)
- [Immunofluorescence](#)
- [Immunoprecipitation](#)
- [Flow Cytometry](#)
- [Cell Culture](#)

### NLRP12 Antibody - Images



NLRP12/MB10187 antibody (Cat. #AM1894b) western blot analysis in mouse brain tissue lysates (35µg/lane). This demonstrates the NLRP12/MB10187 antibody detected the NLRP12/MB10187 protein (arrow).

### NLRP12 Antibody - Background

This gene encodes a member of the CATERPILLER family of cytoplasmic proteins. The encoded

protein, which contains an N-terminal pyrin domain, a NACHT domain, a NACHT-associated domain, and a C-terminus leucine-rich repeat region, functions as an attenuating factor of inflammation by suppressing inflammatory responses in activated monocytes. Alternatively spliced transcript variants encoding distinct isoforms have been described but the full-length nature of some of these has not been determined.

#### **NLRP12 Antibody - References**

Bailey, S.D., et al. Diabetes Care (2010) In press : Cummings, J.R., et al. Tissue Antigens 76(1):48-56(2010) Talmud, P.J., et al. Am. J. Hum. Genet. 85(5):628-642(2009) Fahy, R.J., et al. Am. J. Respir. Crit. Care Med. 177(9):983-988(2008) Jeru, I., et al. Proc. Natl. Acad. Sci. U.S.A. 105(5):1614-1619(2008)