

**Interferon-alpha Antibody**  
**Mouse Monoclonal Antibody (Mab)**  
**Catalog # AM1913b****Specification**

---

**Interferon-alpha Antibody - Product Information**

Application	WB,E
Primary Accession	<a href="#">P01562</a>
Reactivity	Human
Host	Mouse
Clonality	Monoclonal
Isotype	IgG1,k
Calculated MW	21725

**Interferon-alpha Antibody - Additional Information****Gene ID** 3439;3447**Other Names**

Interferon alpha-1/13, IFN-alpha-1/13, Interferon alpha-D, LeIF D, IFNA1

**Target/Specificity**

This Interferon-alpha monoclonal antibody is generated from mouse immunized with Interferon-alpha recombinant protein.

**Dilution**

WB~~1:100

E~~Use at an assay dependent concentration.

**Format**

Purified monoclonal antibody supplied in PBS with 0.09% (W/V) sodium azide. This antibody is purified through a protein G column, followed by dialysis against PBS.

**Storage**

Maintain refrigerated at 2-8°C for up to 2 weeks. For long term storage store at -20°C in small aliquots to prevent freeze-thaw cycles.

**Precautions**

Interferon-alpha Antibody is for research use only and not for use in diagnostic or therapeutic procedures.

**Interferon-alpha Antibody - Protein Information****Name** IFNA1

**Function** Produced by macrophages, IFN-alpha have antiviral activities. Interferon stimulates the production of two enzymes: a protein kinase and an oligoadenylate synthetase.

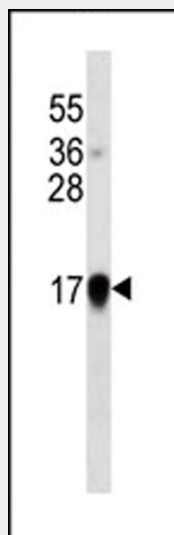
**Cellular Location**  
Secreted.

### Interferon-alpha Antibody - Protocols

Provided below are standard protocols that you may find useful for product applications.

- [Western Blot](#)
- [Blocking Peptides](#)
- [Dot Blot](#)
- [Immunohistochemistry](#)
- [Immunofluorescence](#)
- [Immunoprecipitation](#)
- [Flow Cytometry](#)
- [Cell Culture](#)

### Interferon-alpha Antibody - Images



Interferon-alpha western blot analysis in IFN cell line lysates (35µg/lane). This demonstrates the Interferon-alpha antibody detected the Interferon-alpha protein (arrow).