

**METAP1 Antibody**  
**Mouse Monoclonal Antibody (Mab)**  
**Catalog # AM1922b**

**Specification**

---

**METAP1 Antibody - Product Information**

Application	<b>WB, IHC-P,E</b>
Primary Accession	<a href="#">P53582</a>
Other Accession	<a href="#">NP_055958.2</a>
Reactivity	<b>Human</b>
Host	<b>Mouse</b>
Clonality	<b>Monoclonal</b>
Isotype	<b>IgG1,k</b>

**METAP1 Antibody - Additional Information**

**Gene ID** 23173

**Other Names**

Methionine aminopeptidase 1 {ECO:0000255|HAMAP-Rule:MF\_03174}, MAP 1 {ECO:0000255|HAMAP-Rule:MF\_03174}, MetAP 1 {ECO:0000255|HAMAP-Rule:MF\_03174}, 341118 {ECO:0000255|HAMAP-Rule:MF\_03174}, Peptidase M 1 {ECO:0000255|HAMAP-Rule:MF\_03174}, METAP1, KIAA0094

**Target/Specificity**

This METAP1 monoclonal antibody is generated from mouse immunized with METAP1 recombinant protein.

**Dilution**

WB~~1:500~1000  
IHC-P~~N/A  
E~~Use at an assay dependent concentration.

**Format**

Purified monoclonal antibody supplied in PBS with 0.09% (W/V) sodium azide. This antibody is purified through a protein G column, followed by dialysis against PBS.

**Storage**

Maintain refrigerated at 2-8°C for up to 2 weeks. For long term storage store at -20°C in small aliquots to prevent freeze-thaw cycles.

**Precautions**

METAP1 Antibody is for research use only and not for use in diagnostic or therapeutic procedures.

**METAP1 Antibody - Protein Information**

**Name** METAP1

**Synonyms** KIAA0094

**Function** Cotranslationally removes the N-terminal methionine from nascent proteins. The N-terminal methionine is often cleaved when the second residue in the primary sequence is small and uncharged (Met- Ala-, Cys, Gly, Pro, Ser, Thr, or Val). Required for normal progression through the cell cycle.

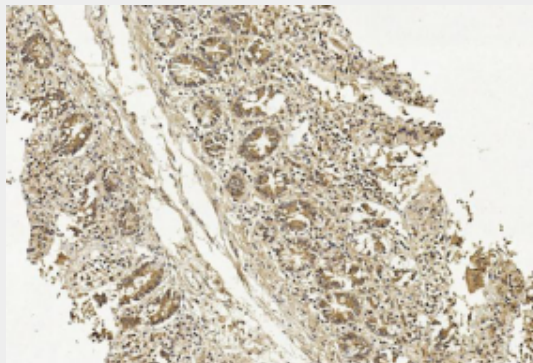
**Cellular Location**

Cytoplasm {ECO:0000255|HAMAP-Rule:MF\_03174}.

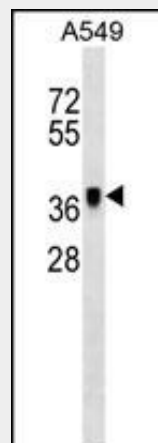
**METAP1 Antibody - Protocols**

Provided below are standard protocols that you may find useful for product applications.

- [Western Blot](#)
- [Blocking Peptides](#)
- [Dot Blot](#)
- [Immunohistochemistry](#)
- [Immunofluorescence](#)
- [Immunoprecipitation](#)
- [Flow Cytometry](#)
- [Cell Culture](#)

**METAP1 Antibody - Images**

Immunohistochemical analysis of paraffin-embedded Human Small intestine section using Pink1 (Cat#AM1922b). AM1922b was diluted at 1:4000 dilution. A undiluted biotinylated goat polyvalent antibody was used as the secondary, followed by DAB staining.



METAP1 Antibody (Cat. #AM1922b) western blot analysis in A549 cell line lysates (35µg/lane). This demonstrates the METAP1 antibody detected the METAP1 protein (arrow).

#### **METAP1 Antibody - Background**

METAP1 removes the amino-terminal methionine from nascent proteins. Required for normal progression through the cell cycle.

#### **METAP1 Antibody - References**

Xiao, Q., et al. Biochemistry 49(26):5588-5599(2010)  
Rose, J.E., et al. Mol. Med. 16 (7-8), 247-253 (2010) :  
Ross, C.J., et al. Nat. Genet. 41(12):1345-1349(2009)  
Hu, X.V., et al. Biochemistry 46(44):12833-12843(2007)  
Ewing, R.M., et al. Mol. Syst. Biol. 3, 89 (2007) :