

**SYP Antibody (C-term) (ascites)**  
**Mouse Monoclonal Antibody (Mab)**  
**Catalog # AM1945a****Specification**

---

**SYP Antibody (C-term) (ascites) - Product Information**

Application	WB,E
Primary Accession	<a href="#">P08247</a>
Other Accession	<a href="#">P07825</a> , <a href="#">Q62277</a> , <a href="#">NP_003170.1</a>
Reactivity	Mouse
Predicted	Rat
Host	Mouse
Clonality	Monoclonal
Isotype	IgM
Calculated MW	33845
Antigen Region	225-253

**SYP Antibody (C-term) (ascites) - Additional Information****Gene ID** 6855**Other Names**

Synaptophysin, Major synaptic vesicle protein p38, SYP

**Target/Specificity**

This SYP antibody is generated from mice immunized with a KLH conjugated synthetic peptide between 225-253 amino acids from the C-terminal region of human SYP.

**Dilution**

WB~~1:100~4000

E~~Use at an assay dependent concentration.

**Format**

Mouse monoclonal antibody supplied in crude ascites with 0.09% (W/V) sodium azide.

**Storage**

Maintain refrigerated at 2-8°C for up to 2 weeks. For long term storage store at -20°C in small aliquots to prevent freeze-thaw cycles.

**Precautions**

SYP Antibody (C-term) (ascites) is for research use only and not for use in diagnostic or therapeutic procedures.

**SYP Antibody (C-term) (ascites) - Protein Information****Name** SYP**Function** Possibly involved in structural functions as organizing other membrane components or

in targeting the vesicles to the plasma membrane. Involved in the regulation of short-term and long-term synaptic plasticity (By similarity).

**Cellular Location**

Cytoplasmic vesicle, secretory vesicle, synaptic vesicle membrane; Multi-pass membrane protein. Synapse, synaptosome

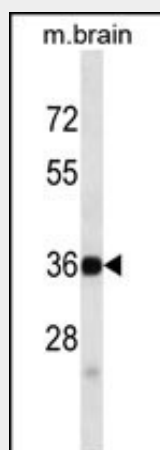
**Tissue Location**

Expressed in the brain, with expression in the hippocampus, the neuropil in the dentate gyrus, where expression is higher in the outer half of the molecular layer than in the inner half, and in the neuropil of CA4 and CA3 (PubMed:8838578). Expressed in the putamen (at protein level) (PubMed:17296554)

**SYP Antibody (C-term) (ascites) - Protocols**

Provided below are standard protocols that you may find useful for product applications.

- [Western Blot](#)
- [Blocking Peptides](#)
- [Dot Blot](#)
- [Immunohistochemistry](#)
- [Immunofluorescence](#)
- [Immunoprecipitation](#)
- [Flow Cytometry](#)
- [Cell Culture](#)

**SYP Antibody (C-term) (ascites) - Images**

SYP Antibody (C-term) (Cat. #AM1945a) western blot analysis in mouse brain tissue lysates (35µg/lane). This demonstrates the SYP antibody detected the SYP protein (arrow).

**SYP Antibody (C-term) (ascites) - Background**

Synaptophysin (p38) is an integral membrane protein of small synaptic vesicles in brain and endocrine cells.[supplied by OMIM].

**SYP Antibody (C-term) (ascites) - References**

Ishida, M., et al. Oncol. Rep. 22(4):733-737(2009)

Sterlacci, W., et al. Virchows Arch. 455(2):125-132(2009)  
Head, E., et al. Neurobiol. Aging 30(7):1125-1134(2009)  
Gulubova, M., et al. J. Gastroenterol. Hepatol. 23(10):1574-1585(2008)  
Glantz, L.A., et al. Neuroscience 149(3):582-591(2007)