

**PGR/PR Antibody**  
**Mouse Monoclonal Antibody (Mab)**  
**Catalog # AM1958b**

**Specification**

---

**PGR/PR Antibody - Product Information**

Application	WB,E
Primary Accession	<a href="#">P06401</a>
Other Accession	<a href="#">NP_000917.3</a>
Reactivity	Human
Host	Mouse
Clonality	Monoclonal
Isotype	IgM,k
Calculated MW	98981
Antigen Region	349-377

**PGR/PR Antibody - Additional Information**

**Gene ID** 5241

**Other Names**

Progesterone receptor, PR, Nuclear receptor subfamily 3 group C member 3, PGR, NR3C3

**Target/Specificity**

This PGR/PR antibody is generated from mice immunized with a KLH conjugated synthetic peptide between 349-377 amino acids from human PGR/PR.

**Dilution**

WB~~1:100

E~~Use at an assay dependent concentration.

**Format**

Purified monoclonal antibody supplied in PBS with 0.09% (W/V) sodium azide. This antibody is prepared by Euglobin precipitation followed by dialysis against PBS.

**Storage**

Maintain refrigerated at 2-8°C for up to 2 weeks. For long term storage store at -20°C in small aliquots to prevent freeze-thaw cycles.

**Precautions**

PGR/PR Antibody is for research use only and not for use in diagnostic or therapeutic procedures.

**PGR/PR Antibody - Protein Information**

**Name** PGR

**Synonyms** NR3C3

**Function** The steroid hormones and their receptors are involved in the regulation of eukaryotic gene expression and affect cellular proliferation and differentiation in target tissues. Depending on the isoform, progesterone receptor functions as a transcriptional activator or repressor.

#### Cellular Location

Nucleus. Cytoplasm. Note=Nucleoplasmic shuttling is both hormone- and cell cycle-dependent. On hormone stimulation, retained in the cytoplasm in the G(1) and G(2)/M phases [Isoform 4]: Mitochondrion outer membrane

#### Tissue Location

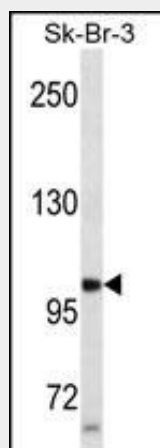
In reproductive tissues the expression of isoform A and isoform B varies as a consequence of developmental and hormonal status. Isoform A and isoform B are expressed in comparable levels in uterine glandular epithelium during the proliferative phase of the menstrual cycle. Expression of isoform B but not of isoform A persists in the glands during mid-secretory phase. In the stroma, isoform A is the predominant form throughout the cycle. Heterogeneous isoform expression between the glands of the endometrium basalis and functionalis is implying region-specific responses to hormonal stimuli

### PGR/PR Antibody - Protocols

Provided below are standard protocols that you may find useful for product applications.

- [Western Blot](#)
- [Blocking Peptides](#)
- [Dot Blot](#)
- [Immunohistochemistry](#)
- [Immunofluorescence](#)
- [Immunoprecipitation](#)
- [Flow Cytometry](#)
- [Cell Culture](#)

### PGR/PR Antibody - Images



PGR/PR Antibody (Cat. #AM1958b) western blot analysis in SK-BR-3 cell line lysates (35µg/lane). This demonstrates the PGR/PR antibody detected the PGR/PR protein (arrow).

### PGR/PR Antibody - Background

This gene encodes a member of the steroid receptor superfamily. The encoded protein mediates the physiological effects

of progesterone, which plays a central role in reproductive events associated with the establishment and maintenance of pregnancy. This gene uses two distinct promoters and translation start sites in the first exon to produce two isoforms, A and B. The two isoforms are identical except for the additional 165 amino acids found in the N-terminus of isoform B and mediate their own response genes and physiologic effects with little overlap. The location of transcription initiation for isoform A has not been clearly determined.

#### **PGR/PR Antibody - References**

Geradts, J., et al. Cancer Invest. 28(9):969-977(2010)  
Tang, P., et al. Cancer Invest. 28(9):978-982(2010)  
Van Belle, V., et al. J. Clin. Oncol. 28(27):4129-4134(2010)  
Taylor, K.C., et al. Horm Res Paediatr (2010) In press :  
Near, A.M., et al. Fertil. Steril. (2010) In press :