

**NCAM1 Antibody (Ascites)**  
**Mouse Monoclonal Antibody (Mab)**  
**Catalog # AM1960a**

**Specification**

---

**NCAM1 Antibody (Ascites) - Product Information**

Application	WB,E
Primary Accession	<a href="#">P13591</a>
Other Accession	<a href="#">P13595</a> , <a href="#">NP_851996.2</a> , <a href="#">NP_000606.3</a>
Reactivity	Human, Mouse
Host	Mouse
Clonality	Monoclonal
Isotype	IgG1
Calculated MW	94574
Antigen Region	830-858

**NCAM1 Antibody (Ascites) - Additional Information**

**Gene ID** 4684

**Other Names**

Neural cell adhesion molecule 1, N-CAM-1, NCAM-1, CD56, NCAM1, NCAM

**Target/Specificity**

This NCAM1 antibody is generated from mice immunized with a KLH conjugated synthetic peptide between 830-858 amino acids from human NCAM1.

**Dilution**

WB~~1:500~16000

E~~Use at an assay dependent concentration.

**Format**

Mouse monoclonal antibody supplied in crude ascites with 0.09% (W/V) sodium azide.

**Storage**

Maintain refrigerated at 2-8°C for up to 2 weeks. For long term storage store at -20°C in small aliquots to prevent freeze-thaw cycles.

**Precautions**

NCAM1 Antibody (Ascites) is for research use only and not for use in diagnostic or therapeutic procedures.

**NCAM1 Antibody (Ascites) - Protein Information**

**Name** NCAM1 ([HGNC:7656](#))

**Synonyms** NCAM

**Function** This protein is a cell adhesion molecule involved in neuron- neuron adhesion, neurite fasciculation, outgrowth of neurites, etc. (Microbial infection) Acts as a receptor for Zika virus.

#### Cellular Location

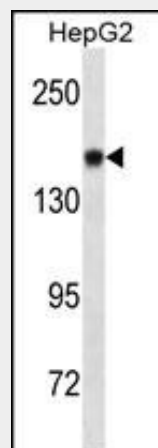
[Isoform 1]: Cell membrane; Single-pass type I membrane protein [Isoform 3]: Cell membrane; Lipid-anchor, GPI- anchor [Isoform 5]: Secreted.

#### NCAM1 Antibody (Ascites) - Protocols

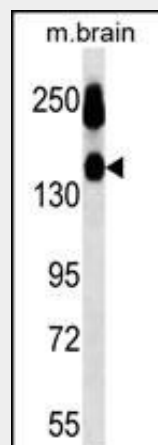
Provided below are standard protocols that you may find useful for product applications.

- [Western Blot](#)
- [Blocking Peptides](#)
- [Dot Blot](#)
- [Immunohistochemistry](#)
- [Immunofluorescence](#)
- [Immunoprecipitation](#)
- [Flow Cytometry](#)
- [Cell Culture](#)

#### NCAM1 Antibody (Ascites) - Images



NCAM1 Antibody (Cat. #AM1960a) western blot analysis in HepG2 cell line lysates (35µg/lane). This demonstrates the NCAM1 antibody detected the NCAM1 protein (arrow).



NCAM1 Antibody (Cat. #AM1960a) western blot analysis in mouse brain tissue lysates (35µg/lane). This demonstrates the NCAM1 antibody detected the NCAM1 protein (arrow).

#### **NCAM1 Antibody (Ascites) - Background**

This protein is a cell adhesion molecule involved in neuron-neuron adhesion, neurite fasciculation, outgrowth of neurites, etc.

#### **NCAM1 Antibody (Ascites) - References**

Foley, D.A., et al. J. Biol. Chem. 285(45):35056-35067(2010)  
Bailey, S.D., et al. Diabetes Care 33(10):2250-2253(2010)  
Kleene, R., et al. J. Biol. Chem. 285(37):28968-28979(2010)  
Bojarska-Junak, A., et al. Oncol. Rep. 24(3):803-810(2010)  
Gomyo, H., et al. Hematology 15(3):157-161(2010)