

**Mouse Bmi1 Antibody**  
**Mouse Monoclonal Antibody (Mab)**  
**Catalog # AM1980b****Specification**

---

**Mouse Bmi1 Antibody - Product Information**

Application	WB,E
Primary Accession	<a href="#">P25916</a>
Other Accession	<a href="#">NP_031578.2</a>
Reactivity	Mouse
Host	Mouse
Clonality	Monoclonal
Isotype	IgG2b
Antigen Region	136-163

**Mouse Bmi1 Antibody - Additional Information****Gene ID** 12151**Other Names**

Polycomb complex protein BMI-1, Polycomb group RING finger protein 4, Bmi1, Bmi-1, Pcgf4

**Target/Specificity**

This Mouse Bmi1 antibody is generated from mice immunized with a KLH conjugated synthetic peptide between 136-163 amino acids from mouse Bmi1.

**Dilution**

WB~~1:200~1600

E~~Use at an assay dependent concentration.

**Format**

Purified monoclonal antibody supplied in PBS with 0.09% (W/V) sodium azide. This antibody is prepared by Euglobin precipitation followed by dialysis against PBS.

**Storage**

Maintain refrigerated at 2-8°C for up to 2 weeks. For long term storage store at -20°C in small aliquots to prevent freeze-thaw cycles.

**Precautions**

Mouse Bmi1 Antibody is for research use only and not for use in diagnostic or therapeutic procedures.

**Mouse Bmi1 Antibody - Protein Information****Name** Bmi1**Synonyms** Bmi-1, Pcgf4

**Function** Component of a Polycomb group (PcG) multiprotein PRC1-like complex, a complex class required to maintain the transcriptionally repressive state of many genes, including Hox genes, throughout development. PcG PRC1 complex acts via chromatin remodeling and modification of histones; it mediates monoubiquitination of histone H2A 'Lys-119', rendering chromatin heritably changed in its expressibility. The complex composed of RNF2, UB2D3 and BMI1 binds nucleosomes, and has activity only with nucleosomal histone H2A. In the PRC1-like complex, regulates the E3 ubiquitin-protein ligase activity of RNF2/RING2 (By similarity).

**Cellular Location**

Nucleus {ECO:0000250|UniProtKB:P35226}. Cytoplasm {ECO:0000250|UniProtKB:P35226}

**Tissue Location**

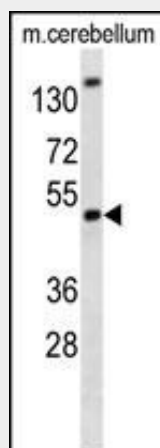
Detected in most organs with high expression levels in thymus, heart, brain and testis

**Mouse Bmi1 Antibody - Protocols**

Provided below are standard protocols that you may find useful for product applications.

- [Western Blot](#)
- [Blocking Peptides](#)
- [Dot Blot](#)
- [Immunohistochemistry](#)
- [Immunofluorescence](#)
- [Immunoprecipitation](#)
- [Flow Cytometry](#)
- [Cell Culture](#)

**Mouse Bmi1 Antibody - Images**



Mouse Bmi1 antibody (Cat. #AM1980b) western blot analysis in mouse cerebellum tissue lysates (35µg/lane). This demonstrates the Mouse Bmi1 antibody detected the Mouse Bmi1 protein (arrow).

**Mouse Bmi1 Antibody - Background**

Component of the Polycomb group (PcG) multiprotein PRC1 complex, a complex required to maintain the transcriptionally repressive state of many genes, including Hox genes, throughout development. PcG PRC1 complex acts via chromatin remodeling and modification of histones; it mediates monoubiquitination of histone H2A 'Lys-119', rendering chromatin heritably changed in its expressibility (By similarity). In the PRC1 complex, it is required to stimulate the E3

ubiquitin-protein ligase activity of RNF2/RING2.

#### **Mouse Bmi1 Antibody - References**

Pereira, J.D., et al. Proc. Natl. Acad. Sci. U.S.A. 107(36):15957-15962(2010)  
Chiba, T., et al. Hepatology 52(3):1111-1123(2010)  
Maertens, G.N., et al. EMBO J. 29(15):2553-2565(2010)  
Lee, K.S., et al. Oncogene 29(23):3349-3361(2010)  
Schaller, M.A., et al. PLoS ONE 5 (8), E12172 (2010) :