

TLE1 Antibody (Center)
Mouse Monoclonal Antibody (Mab)
Catalog # AM1982b**Specification**

TLE1 Antibody (Center) - Product Information

Application	WB,E
Primary Accession	Q04724
Other Accession	NP_005068.2
Reactivity	Human
Host	Mouse
Clonality	Monoclonal
Isotype	IgG1
Calculated MW	83201
Antigen Region	199-228

TLE1 Antibody (Center) - Additional Information**Gene ID** 7088**Other Names**

Transducin-like enhancer protein 1, E(Sp1) homolog, Enhancer of split groucho-like protein 1, ESG1, TLE1

Target/Specificity

This TLE1 antibody is generated from mice immunized with a KLH conjugated synthetic peptide between 199-228 amino acids from the Central region of human TLE1.

Dilution

WB~~1:500~1000

E~~Use at an assay dependent concentration.

Format

Purified monoclonal antibody supplied in PBS with 0.09% (W/V) sodium azide. This antibody is purified through a protein G column, followed by dialysis against PBS.

Storage

Maintain refrigerated at 2-8°C for up to 2 weeks. For long term storage store at -20°C in small aliquots to prevent freeze-thaw cycles.

Precautions

TLE1 Antibody (Center) is for research use only and not for use in diagnostic or therapeutic procedures.

TLE1 Antibody (Center) - Protein Information**Name** TLE1

Function Transcriptional corepressor that binds to a number of transcription factors. Inhibits NF-kappa-B-regulated gene expression. Inhibits the transcriptional activation mediated by FOXA2, and by CTNNB1 and TCF family members in Wnt signaling. Enhances FOXG1/BF- 1- and HES1-mediated transcriptional repression (By similarity). The effects of full-length TLE family members may be modulated by association with dominant-negative AES. Unusual function as coactivator for ESRRG.

Cellular Location

Nucleus. Note=Nuclear and chromatin-associated, depending on isoforms and phosphorylation status. Hyperphosphorylation decreases the affinity for nuclear components

Tissue Location

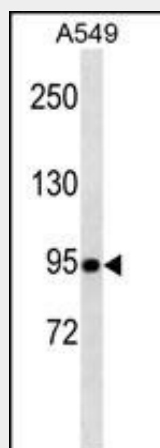
In all tissues examined, mostly in brain, liver and muscle

TLE1 Antibody (Center) - Protocols

Provided below are standard protocols that you may find useful for product applications.

- [Western Blot](#)
- [Blocking Peptides](#)
- [Dot Blot](#)
- [Immunohistochemistry](#)
- [Immunofluorescence](#)
- [Immunoprecipitation](#)
- [Flow Cytometry](#)
- [Cell Culture](#)

TLE1 Antibody (Center) - Images



TLE1 Antibody (Center) (Cat. #AM1982b) western blot analysis in A549 cell line lysates (35µg/lane). This demonstrates the TLE1 antibody detected the TLE1 protein (arrow).

TLE1 Antibody (Center) - Background

Transcriptional corepressor that binds to a number of transcription factors. Inhibits NF-kappa-B-regulated gene expression. Inhibits the transcriptional activation mediated by FOXA2, and by CTNNB1 and TCF family members in Wnt signaling. The effects of full-length TLE family members may be modulated by association with dominant-negative AES. Unusual function as coactivator for ESRRG.

TLE1 Antibody (Center) - References

Rose, J.E., et al. Mol. Med. 16 (7-8), 247-253 (2010) :
Carvalho, L.R., et al. Mol. Endocrinol. 24(4):754-765(2010)
Ali, S.A., et al. Proc. Natl. Acad. Sci. U.S.A. 107(9):4165-4169(2010)
Jagdis, A., et al. Am. J. Surg. Pathol. 33(12):1743-1751(2009)
Buscarlet, M., et al. PLoS ONE 4 (12), E8107 (2009) :