

**MS4A1/CD20 Antibody (C-term) (Ascites)**  
**Mouse Monoclonal Antibody (Mab)**  
**Catalog # AM1990a****Specification**

---

**MS4A1/CD20 Antibody (C-term) (Ascites) - Product Information**

Application	WB,E
Primary Accession	<a href="#">P11836</a>
Other Accession	<a href="#">NP_068769.2</a> , <a href="#">NP_690605.1</a>
Reactivity	Human
Host	Mouse
Clonality	Monoclonal
Isotype	IgG1
Calculated MW	33077
Antigen Region	266-294

**MS4A1/CD20 Antibody (C-term) (Ascites) - Additional Information****Gene ID** 931**Other Names**

B-lymphocyte antigen CD20, B-lymphocyte surface antigen B1, Bp35, Leukocyte surface antigen Leu-16, Membrane-spanning 4-domains subfamily A member 1, CD20, MS4A1, CD20

**Target/Specificity**

This MS4A1/CD20 antibody is generated from mice immunized with a KLH conjugated synthetic peptide between 266-294 amino acids from the C-terminal region of human MS4A1/CD20.

**Dilution**

WB~~1:1000~3200

E~~Use at an assay dependent concentration.

**Format**

Mouse monoclonal antibody supplied in crude ascites with 0.09% (W/V) sodium azide.

**Storage**

Maintain refrigerated at 2-8°C for up to 2 weeks. For long term storage store at -20°C in small aliquots to prevent freeze-thaw cycles.

**Precautions**

MS4A1/CD20 Antibody (C-term) (Ascites) is for research use only and not for use in diagnostic or therapeutic procedures.

**MS4A1/CD20 Antibody (C-term) (Ascites) - Protein Information****Name** MS4A1**Synonyms** CD20

**Function** B-lymphocyte-specific membrane protein that plays a role in the regulation of cellular calcium influx necessary for the development, differentiation, and activation of B-lymphocytes (PubMed:[12920111](#), PubMed:[3925015](#), PubMed:[7684739](#)). Functions as a store-operated calcium (SOC) channel component promoting calcium influx after activation by the B-cell receptor/BCR (PubMed:[12920111](#), PubMed:[18474602](#), PubMed:[7684739](#)).

**Cellular Location**

Cell membrane; Multi-pass membrane protein. Cell membrane; Lipid-anchor. Note=Constitutively associated with membrane rafts.

**Tissue Location**

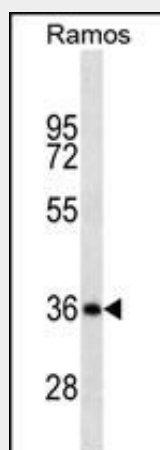
Expressed on B-cells.

**MS4A1/CD20 Antibody (C-term) (Ascites) - Protocols**

Provided below are standard protocols that you may find useful for product applications.

- [Western Blot](#)
- [Blocking Peptides](#)
- [Dot Blot](#)
- [Immunohistochemistry](#)
- [Immunofluorescence](#)
- [Immunoprecipitation](#)
- [Flow Cytometry](#)
- [Cell Culture](#)

**MS4A1/CD20 Antibody (C-term) (Ascites) - Images**



MS4A1/CD20 Antibody (C-term) (Cat. #AM1990a) western blot analysis in Ramos cell line lysates (35µg/lane). This demonstrates the MS4A1/CD20 antibody detected the MS4A1/CD20 protein (arrow).

**MS4A1/CD20 Antibody (C-term) (Ascites) - Background**

This gene encodes a member of the membrane-spanning 4A gene family. Members of this nascent protein family are characterized by common structural features and similar intron/exon splice boundaries and display unique expression patterns among hematopoietic cells and nonlymphoid tissues. This gene encodes a B-lymphocyte surface molecule which plays a role in the development

and differentiation of B-cells into plasma cells. This family member is localized to 11q12, among a cluster of family members. Alternative splicing of this gene results in two transcript variants which encode the same protein.

#### **MS4A1/CD20 Antibody (C-term) (Ascites) - References**

Weber, M.S., et al. Ann. Neurol. 68(3):369-383(2010)  
Wu, D., et al. Am. J. Clin. Pathol. 134(2):258-265(2010)  
de Haij, S., et al. Cancer Res. 70(8):3209-3217(2010)  
Beers, S.A., et al. Semin. Hematol. 47(2):107-114(2010)  
Davila, S., et al. Genes Immun. 11(3):232-238(2010)