

**T Antibody (Ascites)**  
**Mouse Monoclonal Antibody (Mab)**  
**Catalog # AM1993a****Specification**

---

**T Antibody (Ascites) - Product Information**

Application	WB,E
Primary Accession	<a href="#">O15178</a>
Other Accession	<a href="#">Q07998</a> , <a href="#">NP_003172.1</a>
Reactivity	Human
Predicted	Zebrafish
Host	Mouse
Clonality	Monoclonal
Isotype	IgM
Calculated MW	47443
Antigen Region	201-228

**T Antibody (Ascites) - Additional Information****Gene ID** 6862**Other Names**

Brachyury protein, Protein T, T

**Target/Specificity**

This T antibody is generated from mice immunized with a KLH conjugated synthetic peptide between 201-228 amino acids from human T.

**Dilution**

WB~~1:1000~8000

E~~Use at an assay dependent concentration.

**Format**

Mouse monoclonal antibody supplied in crude ascites with 0.09% (W/V) sodium azide.

**Storage**

Maintain refrigerated at 2-8°C for up to 2 weeks. For long term storage store at -20°C in small aliquots to prevent freeze-thaw cycles.

**Precautions**

T Antibody (Ascites) is for research use only and not for use in diagnostic or therapeutic procedures.

**T Antibody (Ascites) - Protein Information****Name** TBXT ([HGNC:11515](#))**Synonyms** T

**Function** Involved in the transcriptional regulation of genes required for mesoderm formation and differentiation. Binds to a palindromic T site 5'-TTCACACCTAGGTGTGAA-3' DNA sequence and activates gene transcription when bound to such a site.

**Cellular Location**

Nucleus

**Tissue Location**

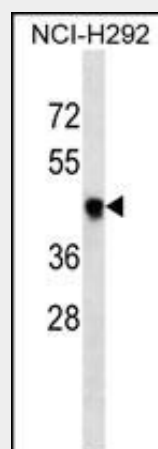
Detected in testis, but not in other, normal tissues. Detected in lung tumors (at protein level)

**T Antibody (Ascites) - Protocols**

Provided below are standard protocols that you may find useful for product applications.

- [Western Blot](#)
- [Blocking Peptides](#)
- [Dot Blot](#)
- [Immunohistochemistry](#)
- [Immunofluorescence](#)
- [Immunoprecipitation](#)
- [Flow Cytometry](#)
- [Cell Culture](#)

**T Antibody (Ascites) - Images**



T Antibody (Cat. #AM1993a) western blot analysis in NCI-H292 cell line lysates (35µg/lane). This demonstrates the T antibody detected the T protein (arrow).

**T Antibody (Ascites) - Background**

The protein encoded by this gene is an embryonic nuclear transcription factor that binds to a specific DNA element, the palindromic T-site. It binds through a region in its N-terminus, called the T-box, and effects transcription of genes required for mesoderm formation and differentiation. The protein is localized to notochord-derived cells.

**T Antibody (Ascites) - References**

Jambhekar, N.A., et al. Arch. Pathol. Lab. Med. 134(8):1181-1187(2010)

Docherty, S.J., et al. BMC Genet. 11, 61 (2010) :  
Yang, X.R., et al. Nat. Genet. 41(11):1176-1178(2009)  
Oakley, G.J., et al. Mod. Pathol. 21(12):1461-1469(2008)  
Bondue, A., et al. Cell Stem Cell 3(1):69-84(2008)