

T Antibody
Mouse Monoclonal Antibody (Mab)
Catalog # AM1993b**Specification**

T Antibody - Product Information

Application	WB,E
Primary Accession	O15178
Other Accession	NP_003172.1
Reactivity	Human, Mouse
Host	Mouse
Clonality	Monoclonal
Isotype	IgM
Antigen Region	262-291

T Antibody - Additional Information**Gene ID** 6862**Other Names**

Brachyury protein, Protein T, T

Target/Specificity

This T antibody is generated from mice immunized with a KLH conjugated synthetic peptide between 262-291 amino acids from human T.

Dilution

WB~~1:500~1000

E~~Use at an assay dependent concentration.

Format

Purified monoclonal antibody supplied in PBS with 0.09% (W/V) sodium azide. This antibody is prepared by Euglobin precipitation followed by dialysis against PBS.

Storage

Maintain refrigerated at 2-8°C for up to 2 weeks. For long term storage store at -20°C in small aliquots to prevent freeze-thaw cycles.

Precautions

T Antibody is for research use only and not for use in diagnostic or therapeutic procedures.

T Antibody - Protein Information**Name** TBXT ([HGNC:11515](#))**Synonyms** T**Function** Involved in the transcriptional regulation of genes required for mesoderm formation and

differentiation. Binds to a palindromic T site 5'-TTCACACCTAGGTGTGAA-3' DNA sequence and activates gene transcription when bound to such a site.

Cellular Location

Nucleus

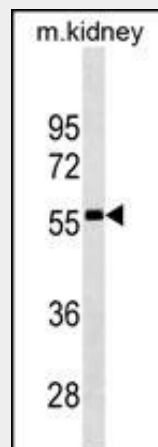
Tissue Location

Detected in testis, but not in other, normal tissues. Detected in lung tumors (at protein level)

T Antibody - Protocols

Provided below are standard protocols that you may find useful for product applications.

- [Western Blot](#)
- [Blocking Peptides](#)
- [Dot Blot](#)
- [Immunohistochemistry](#)
- [Immunofluorescence](#)
- [Immunoprecipitation](#)
- [Flow Cytometry](#)
- [Cell Culture](#)

T Antibody - Images

T Antibody (Cat. #AM1993b) western blot analysis in mouse kidney tissue lysates (35µg/lane). This demonstrates the T antibody detected the T protein (arrow).

T Antibody - Background

The protein encoded by this gene is an embryonic nuclear transcription factor that binds to a specific DNA element, the palindromic T-site. It binds through a region in its N-terminus, called the T-box, and effects transcription of genes required for mesoderm formation and differentiation. The protein is localized to notochord-derived cells.

T Antibody - References

Jambhekar, N.A., et al. Arch. Pathol. Lab. Med. 134(8):1181-1187(2010)
Docherty, S.J., et al. BMC Genet. 11, 61 (2010) :

Yang, X.R., et al. Nat. Genet. 41(11):1176-1178(2009)
Oakley, G.J., et al. Mod. Pathol. 21(12):1461-1469(2008)
Bondue, A., et al. Cell Stem Cell 3(1):69-84(2008)