

**LTB Antibody (C-term)**  
**Mouse Monoclonal Antibody (Mab)**  
**Catalog # AM2016b****Specification**

---

**LTB Antibody (C-term) - Product Information**

Application	WB,E
Primary Accession	<a href="#">Q06643</a>
Other Accession	<a href="#">Q9TSV8</a> , <a href="#">NP_002332.1</a> , <a href="#">NP_033666.1</a>
Reactivity	Human
Predicted	Pig
Host	Mouse
Clonality	Monoclonal
Isotype	IgM
Calculated MW	25390
Antigen Region	199-227

**LTB Antibody (C-term) - Additional Information****Gene ID** 4050**Other Names**

Lymphotoxin-beta, LT-beta, Tumor necrosis factor C, TNF-C, Tumor necrosis factor ligand superfamily member 3, LTB, TNFC, TNFSF3

**Target/Specificity**

This LTB antibody is generated from mice immunized with a KLH conjugated synthetic peptide between 199-227 amino acids from the C-terminal region of human LTB.

**Dilution**

WB~~1:500~1000

E~~Use at an assay dependent concentration.

**Format**

Purified monoclonal antibody supplied in PBS with 0.09% (W/V) sodium azide. This antibody is prepared by Euglobin precipitation followed by dialysis against PBS.

**Storage**

Maintain refrigerated at 2-8°C for up to 2 weeks. For long term storage store at -20°C in small aliquots to prevent freeze-thaw cycles.

**Precautions**

LTB Antibody (C-term) is for research use only and not for use in diagnostic or therapeutic procedures.

**LTB Antibody (C-term) - Protein Information****Name** LTB

**Synonyms** TNFC, TNFSF3

**Function** Cytokine that binds to LTBR/TNFRSF3 (PubMed:[24248355](#)). May play a specific role in immune response regulation. Provides the membrane anchor for the attachment of the heterotrimeric complex to the cell surface. Isoform 2 is probably non-functional.

**Cellular Location**

Membrane; Single-pass type II membrane protein

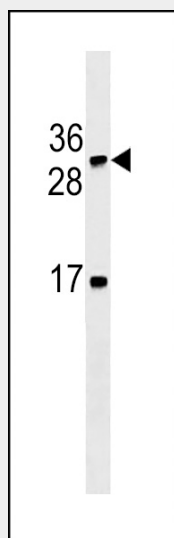
**Tissue Location**

Spleen and thymus.

**LTB Antibody (C-term) - Protocols**

Provided below are standard protocols that you may find useful for product applications.

- [Western Blot](#)
- [Blocking Peptides](#)
- [Dot Blot](#)
- [Immunohistochemistry](#)
- [Immunofluorescence](#)
- [Immunoprecipitation](#)
- [Flow Cytometry](#)
- [Cell Culture](#)

**LTB Antibody (C-term) - Images**

LTB Antibody (C-term) (Cat. #AM2016b) western blot analysis in HL-60 cell line lysates (35µg/lane). This demonstrates the LTB antibody detected the LTB protein (arrow).

**LTB Antibody (C-term) - Background**

Lymphotoxin beta is a type II membrane protein of the TNF family. It anchors lymphotoxin-alpha to the cell surface through heterotrimer formation. The predominant form on the lymphocyte surface is the lymphotoxin-alpha 1/beta 2 complex (e.g. 1 molecule alpha/2 molecules beta) and this complex is the primary ligand for

the lymphotoxin-beta receptor. The minor complex is lymphotoxin-alpha 2/beta 1. LTB is an inducer of the inflammatory response system and involved in normal development of lymphoid tissue. Lymphotoxin-beta isoform b is unable to complex with lymphotoxin-alpha suggesting a function for lymphotoxin-beta which is independent of lymphotoxin-alpha. Alternative splicing results in multiple transcript variants encoding different isoforms.

#### **LTB Antibody (C-term) - References**

Clancy, R.M., et al. Arthritis Rheum. 62(11):3415-3424(2010)  
Bailey, S.D., et al. Diabetes Care 33(10):2250-2253(2010)  
Young, J., et al. Cytokine 51(1):78-86(2010)  
McGeachie, M., et al. Circulation 120(24):2448-2454(2009)  
Talmud, P.J., et al. Am. J. Hum. Genet. 85(5):628-642(2009)