

UBL5 Antibody
Mouse Monoclonal Antibody (Mab)
Catalog # AM2024b**Specification**

UBL5 Antibody - Product Information

Application	WB,E
Primary Accession	O9BZL1
Other Accession	O9EPV8 , Q3T0Z3 , NP_001041706.1 , NP_077268.1
Reactivity	Human, Mouse
Predicted	Bovine
Host	Mouse
Clonality	Monoclonal
Isotype	IgG1
Calculated MW	8547

UBL5 Antibody - Additional Information**Gene ID** 59286**Other Names**

Ubiquitin-like protein 5, UBL5

Target/Specificity

Purified His-tagged UBL5 protein(Fragment) was used to produced this monoclonal antibody.

Dilution

WB~~1:100

E~~Use at an assay dependent concentration.

Format

Purified polyclonal antibody supplied in PBS with 0.09% (W/V) sodium azide. This antibody is prepared by Saturated Ammonium Sulfate (SAS) precipitation followed by dialysis against PBS.

Storage

Maintain refrigerated at 2-8°C for up to 2 weeks. For long term storage store at -20°C in small aliquots to prevent freeze-thaw cycles.

Precautions

UBL5 Antibody is for research use only and not for use in diagnostic or therapeutic procedures.

UBL5 Antibody - Protein Information**Name** UBL5**Function** Ubiquitin-like protein that plays a role in cell proliferation and sister chromatid cohesion by associating with spliceosomal proteins (PubMed:[25092792](#)). Participates thereby in pre- mRNA

splicing by maintaining spliceosome integrity. Promotes the functional integrity of the Fanconi anemia DNA repair pathway by interacting with FANCI component and subsequently mediating the formation of FANCI homodimers (PubMed:[25862789](#)). Also plays a protective role against ER stress-induced apoptosis (PubMed:[37315790](#)).

Cellular Location

Cytoplasm. Nucleus. Nucleus, Cajal body

Tissue Location

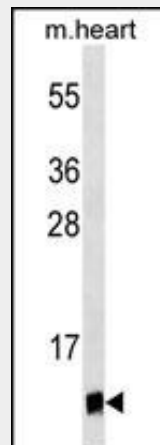
Ubiquitous. Highest level of expression in heart, skeletal muscle, kidney, liver, iris and lymphoblasts

UBL5 Antibody - Protocols

Provided below are standard protocols that you may find useful for product applications.

- [Western Blot](#)
- [Blocking Peptides](#)
- [Dot Blot](#)
- [Immunohistochemistry](#)
- [Immunofluorescence](#)
- [Immunoprecipitation](#)
- [Flow Cytometry](#)
- [Cell Culture](#)

UBL5 Antibody - Images



UBL5 Antibody (Cat. #AM2024b) western blot analysis in mouse heart tissue lysates (35µg/lane). This demonstrates the UBL5 antibody detected the UBL5 protein (arrow).

UBL5 Antibody - Background

Ubiquitin-like proteins (UBLs) are thought to be reversible modulators of protein function rather than protein degraders like ubiquitin (MIM 191339).

UBL5 Antibody - References

de Krom, M., et al. Biol. Psychiatry 65(7):625-630(2009)
Sentinelli, F., et al. J. Pediatr. Endocrinol. Metab. 21(12):1139-1145(2008)

Bozaoglu, K., et al. Hum. Biol. 78(2):147-159(2006)
Wilkinson, C.R., et al. Curr. Biol. 14(24):2283-2288(2004)
Jowett, J.B., et al. Diabetes 53(9):2467-2472(2004)