

**CRP Antibody (Ascites)**  
**Mouse Monoclonal Antibody (Mab)**  
**Catalog # AM2041a****Specification**

---

**CRP Antibody (Ascites) - Product Information**

Application	WB,E
Primary Accession	<a href="#">P02741</a>
Other Accession	<a href="#">NP_000558.2</a>
Reactivity	Human
Host	Mouse
Clonality	Monoclonal
Isotype	IgG3
Calculated MW	25039
Antigen Region	194-221

**CRP Antibody (Ascites) - Additional Information****Gene ID** 1401**Other Names**

C-reactive protein, C-reactive protein(1-205), CRP, PTX1

**Target/Specificity**

This CRP antibody is generated from mice immunized with a KLH conjugated synthetic peptide between 194-221 amino acids from human CRP.

**Dilution**

WB~~1:500~8000

E~~Use at an assay dependent concentration.

**Format**

Mouse monoclonal antibody supplied in crude ascites with 0.09% (W/V) sodium azide.

**Storage**

Maintain refrigerated at 2-8°C for up to 2 weeks. For long term storage store at -20°C in small aliquots to prevent freeze-thaw cycles.

**Precautions**

CRP Antibody (Ascites) is for research use only and not for use in diagnostic or therapeutic procedures.

**CRP Antibody (Ascites) - Protein Information****Name** CRP**Synonyms** PTX1

**Function** Displays several functions associated with host defense: it promotes agglutination, bacterial capsular swelling, phagocytosis and complement fixation through its calcium-dependent binding to phosphorylcholine. Can interact with DNA and histones and may scavenge nuclear material released from damaged circulating cells.

**Cellular Location**

Secreted.

**Tissue Location**

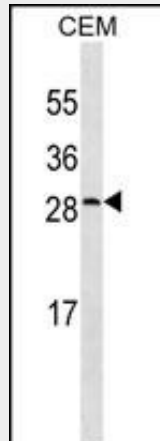
Found in plasma.

**CRP Antibody (Ascites) - Protocols**

Provided below are standard protocols that you may find useful for product applications.

- [Western Blot](#)
- [Blocking Peptides](#)
- [Dot Blot](#)
- [Immunohistochemistry](#)
- [Immunofluorescence](#)
- [Immunoprecipitation](#)
- [Flow Cytometry](#)
- [Cell Culture](#)

**CRP Antibody (Ascites) - Images**



CRP Antibody (Cat. #AM2041a) western blot analysis in CEM cell line lysates (35µg/lane). This demonstrates the CRP antibody detected the CRP protein (arrow).

**CRP Antibody (Ascites) - Background**

The protein encoded by this gene belongs to the pentaxin family. It is involved in several host defense related functions based on its ability to recognize foreign pathogens and damaged cells of the host and to initiate their elimination by interacting with humoral and cellular effector systems in the blood. Consequently, the level of this protein in plasma increases greatly during acute phase response to tissue injury, infection, or other inflammatory stimuli.

**CRP Antibody (Ascites) - References**

Brindle, E., et al. J. Immunol. Methods 362 (1-2), 112-120 (2010) :  
Lim, L.S., et al. Invest. Ophthalmol. Vis. Sci. 51(9):4458-4463(2010)  
Marott, S.C., et al. J. Am. Coll. Cardiol. 56(10):789-795(2010)  
Szczesny, G., et al. Arch Orthop Trauma Surg (2010) In press :  
Kuhlenbaeumer, G., et al. Cerebrovasc. Dis. 30(5):476-482(2010)