

CD138 Antibody
Mouse Monoclonal Antibody (Mab)
Catalog # AM2144b**Specification**

CD138 Antibody - Product Information

Application	WB,E
Primary Accession	P18827
Other Accession	NP_001006947.1
Reactivity	Human
Host	Mouse
Clonality	Monoclonal
Isotype	IgG1

CD138 Antibody - Additional Information**Gene ID** 6382**Other Names**

Syndecan-1, SYND1, CD138, SDC1, SDC

Target/Specificity

Purified His-tagged CD138 protein(Fragment) was used to produced this monoclonal antibody.

Dilution

WB~~1:2000

E~~Use at an assay dependent concentration.

Format

Purified monoclonal antibody supplied in PBS with 0.09% (W/V) sodium azide. This antibody is purified through a protein G column, followed by dialysis against PBS.

Storage

Maintain refrigerated at 2-8°C for up to 2 weeks. For long term storage store at -20°C in small aliquots to prevent freeze-thaw cycles.

Precautions

CD138 Antibody is for research use only and not for use in diagnostic or therapeutic procedures.

CD138 Antibody - Protein Information**Name** SDC1 ([HGNC:10658](#))**Synonyms** SDC**Function** Cell surface proteoglycan that contains both heparan sulfate and chondroitin sulfate and that links the cytoskeleton to the interstitial matrix (By similarity). Regulates exosome biogenesis in concert with SDCBP and PDCD6IP (PubMed:[22660413](#)). Able to induce its own expression in

dental mesenchymal cells and also in the neighboring dental epithelial cells via an MSX1-mediated pathway (By similarity).

Cellular Location

Membrane; Single-pass type I membrane protein. Secreted Secreted, extracellular exosome
Note=Shedding of the ectodomain produces a soluble form

Tissue Location

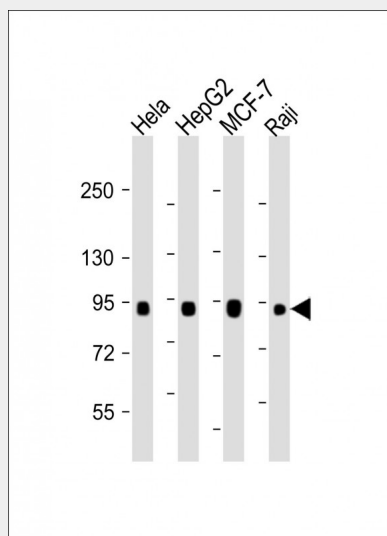
Detected in placenta (at protein level) (PubMed:32337544). Detected in fibroblasts (at protein level) (PubMed:36213313).

CD138 Antibody - Protocols

Provided below are standard protocols that you may find useful for product applications.

- [Western Blot](#)
- [Blocking Peptides](#)
- [Dot Blot](#)
- [Immunohistochemistry](#)
- [Immunofluorescence](#)
- [Immunoprecipitation](#)
- [Flow Cytometry](#)
- [Cell Culture](#)

CD138 Antibody - Images



All lanes : Anti- at 1:2000 dilution Lane 1: HeLa whole cell lysate Lane 2: HepG2 whole cell lysate Lane 3: MCF-7 whole cell lysate Lane 4: Raji whole cell lysate Lysates/proteins at 20 µg per lane. Secondary Goat Anti-mouse IgG, (H+L), Peroxidase conjugated at 1/10000 dilution. Predicted band size : 32 kDa Blocking/Dilution buffer: 5% NFDM/TBST.

CD138 Antibody - Background

The protein encoded by this gene is a transmembrane (type I) heparan sulfate proteoglycan and is a member of the syndecan proteoglycan family. The syndecans mediate cell binding, cell signaling, and cytoskeletal organization and syndecan receptors are required for internalization of the HIV-1 tat protein. The syndecan-1 protein functions as an integral membrane protein and participates in

cell proliferation, cell migration and cell-matrix interactions via its receptor for extracellular matrix proteins. Altered syndecan-1 expression has been detected in several different tumor types. While several transcript variants may exist for this gene, the full-length nature of only two have been described to date. These two represent the major variants of this gene and encode the same protein.

CD138 Antibody - References

Tsai, E.W., et al. Transplantation 90(8):875-881(2010) Hozumi, K., et al. FEBS Lett. 584(15):3381-3385(2010) Zyada, M.M., et al. Ann Diagn Pathol 14(3):153-161(2010) Al-Shibli, K., et al. APMIS 118(5):371-382(2010) Szumilo, J., et al. Folia Histochem. Cytobiol. 47(4):571-578(2009)