

**LYPD6B Antibody (Center) (Ascites)**  
**Mouse Monoclonal Antibody (Mab)**  
**Catalog # AM2160a****Specification**

---

**LYPD6B Antibody (Center) (Ascites) - Product Information**

Application	WB,E
Primary Accession	<a href="#">Q8NI32</a>
Other Accession	<a href="#">Q9D7F2</a> , <a href="#">NP_808879.2</a>
Reactivity	Human, Mouse
Host	Mouse
Clonality	Monoclonal
Isotype	IgG2b
Calculated MW	20656
Antigen Region	79-108

**LYPD6B Antibody (Center) (Ascites) - Additional Information****Gene ID** 130576**Other Names**

Ly6/PLAUR domain-containing protein 6B, LYPD6B

**Target/Specificity**

This LYPD6B antibody is generated from mice immunized with a KLH conjugated synthetic peptide between 79-108 amino acids from the Central region of human LYPD6B.

**Dilution**

WB~~1:500~4000

E~~Use at an assay dependent concentration.

**Format**

Mouse monoclonal antibody supplied in crude ascites with 0.09% (W/V) sodium azide.

**Storage**

Maintain refrigerated at 2-8°C for up to 2 weeks. For long term storage store at -20°C in small aliquots to prevent freeze-thaw cycles.

**Precautions**

LYPD6B Antibody (Center) (Ascites) is for research use only and not for use in diagnostic or therapeutic procedures.

**LYPD6B Antibody (Center) (Ascites) - Protein Information****Name** LYPD6B

**Function** Likely acts as a modulator of nicotinic acetylcholine receptors (nAChRs) activity (PubMed:[26586467](#), PubMed:[34631692](#)). In vitro acts on nAChRs in a subtype- and

stoichiometry-dependent manner (PubMed:[26586467](#)). Modulates specifically alpha-3(3):beta-4(2) nAChRs by enhancing the sensitivity to ACh, decreasing ACh-induced maximal current response and increasing the rate of desensitization to ACh; has no effect on alpha-7 homomeric nAChRs; modulates alpha-3(2):alpha-5:beta-4(2) nAChRs in the context of CHRNA5/alpha-5 variant Asn-398 but not its wild-type sequence (PubMed:[26586467](#)). However, according to another report in vitro it can weakly inhibit alpha-7 nAChRs (PubMed:[34631692](#)).

#### Cellular Location

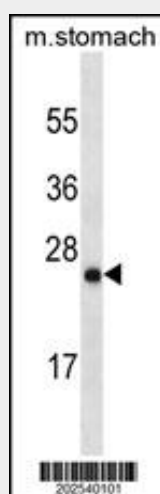
Cell membrane; Lipid-anchor, GPI- anchor

### LYPD6B Antibody (Center) (Ascites) - Protocols

Provided below are standard protocols that you may find useful for product applications.

- [Western Blot](#)
- [Blocking Peptides](#)
- [Dot Blot](#)
- [Immunohistochemistry](#)
- [Immunofluorescence](#)
- [Immunoprecipitation](#)
- [Flow Cytometry](#)
- [Cell Culture](#)

### LYPD6B Antibody (Center) (Ascites) - Images



LYPD6B Antibody (Center)(Ascites)(Cat. #AM2160a) western blot analysis in mouse stomach tissue lysates (35µg/lane). This demonstrates the LYPD6B antibody detected the LYPD6B protein (arrow).

### LYPD6B Antibody (Center) (Ascites) - Background

The function of this protein is unknown.

### LYPD6B Antibody (Center) (Ascites) - References

Rose, J.E., et al. Mol. Med. 16 (7-8), 247-253 (2010) :  
Ni, J., et al. Mol. Biol. Rep. 36(4):697-703(2009)