

**LOX Antibody (Center)**  
**Mouse Monoclonal Antibody (Mab)**  
**Catalog # AM2166b****Specification**

---

**LOX Antibody (Center) - Product Information**

Application	WB,E
Primary Accession	<a href="#">P28300</a>
Other Accession	<a href="#">P16636</a> , <a href="#">P45845</a> , <a href="#">P28301</a> , <a href="#">NP_002308.2</a>
Reactivity	Human
Predicted	Mouse, Pig, Rat
Host	Mouse
Clonality	Monoclonal
Isotype	IgG2b
Calculated MW	46944
Antigen Region	234-260

**LOX Antibody (Center) - Additional Information****Gene ID** 4015**Other Names**

Protein-lysine 6-oxidase, Lysyl oxidase, LOX

**Target/Specificity**

This LOX antibody is generated from mice immunized with a KLH conjugated synthetic peptide between 234-260 amino acids from the Central region of human LOX.

**Dilution**

WB~~1:500~1000

E~~Use at an assay dependent concentration.

**Format**

Purified monoclonal antibody supplied in PBS with 0.09% (W/V) sodium azide. This antibody is purified through a protein G column, followed by dialysis against PBS.

**Storage**

Maintain refrigerated at 2-8°C for up to 2 weeks. For long term storage store at -20°C in small aliquots to prevent freeze-thaw cycles.

**Precautions**

LOX Antibody (Center) is for research use only and not for use in diagnostic or therapeutic procedures.

**LOX Antibody (Center) - Protein Information****Name** LOX

**Function** Responsible for the post-translational oxidative deamination of peptidyl lysine residues in precursors to fibrous collagen and elastin (PubMed:[26838787](#)). Regulator of Ras expression. May play a role in tumor suppression. Plays a role in the aortic wall architecture (By similarity).

**Cellular Location**

Secreted. Secreted, extracellular space

**Tissue Location**

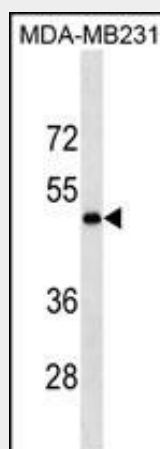
Heart, placenta, skeletal muscle, kidney, lung and pancreas.

### LOX Antibody (Center) - Protocols

Provided below are standard protocols that you may find useful for product applications.

- [Western Blot](#)
- [Blocking Peptides](#)
- [Dot Blot](#)
- [Immunohistochemistry](#)
- [Immunofluorescence](#)
- [Immunoprecipitation](#)
- [Flow Cytometry](#)
- [Cell Culture](#)

### LOX Antibody (Center) - Images



LOX Antibody (Center) (Cat. #AM2166b) western blot analysis in MDA-MB231 cell line lysates (35µg/lane). This demonstrates the LOX antibody detected the LOX protein (arrow).

### LOX Antibody (Center) - Background

The protein encoded by this gene is an extracellular copper enzyme that initiates the crosslinking of collagens and elastin. The enzyme catalyzes oxidative deamination of the epsilon-amino group in certain lysine and hydroxylysine residues of collagens and lysine residues of elastin. In addition to crosslinking extracellular matrix proteins, the encoded protein may have a role in tumor suppression. Defects in this gene are a cause of autosomal recessive cutis laxa type I (CL type I). Two transcript variants encoding different isoforms have been found for this gene.

**LOX Antibody (Center) - References**

Gao, Y., et al. Proc. Natl. Acad. Sci. U.S.A. 107(44):18892-18897(2010)  
Santhanam, A.N., et al. Oncogene 29(27):3921-3932(2010)  
Liu, C.Y., et al. Carcinogenesis 31(7):1259-1263(2010)  
Rose, J.E., et al. Mol. Med. 16 (7-8), 247-253 (2010) :  
Wang, X., et al. PLoS ONE 5 (8), E11934 (2010) :