

**CYK18 Antibody (C-term)**  
**Mouse Monoclonal Antibody (Mab)**  
**Catalog # AM2178B****Specification**

---

**CYK18 Antibody (C-term) - Product Information**

Application	WB,E
Primary Accession	<a href="#">P05783</a>
Reactivity	Human
Host	Mouse
Clonality	Monoclonal
Isotype	IgG3
Calculated MW	48058

**CYK18 Antibody (C-term) - Additional Information****Gene ID** 3875**Other Names**

Keratin, type I cytoskeletal 18, Cell proliferation-inducing gene 46 protein, Cytokeratin-18, CK-18, Keratin-18, K18, KRT18, CYK18

**Target/Specificity**

This CYK18 Monoclonal antibody is generated from mice immunized with a KLH conjugated synthetic peptide selected from the 400-430 region of human CYK18.

**Dilution**

WB~~1:1000

E~~Use at an assay dependent concentration.

**Format**

Purified monoclonal antibody supplied in PBS with 0.09% (W/V) sodium azide. This antibody is purified through a protein G column, eluted with high and low pH buffers and neutralized immediately, followed by dialysis against PBS.

**Storage**

Maintain refrigerated at 2-8°C for up to 2 weeks. For long term storage store at -20°C in small aliquots to prevent freeze-thaw cycles.

**Precautions**

CYK18 Antibody (C-term) is for research use only and not for use in diagnostic or therapeutic procedures.

**CYK18 Antibody (C-term) - Protein Information****Name** KRT18**Synonyms** CYK18

**Function** Involved in the uptake of thrombin-antithrombin complexes by hepatic cells (By similarity). When phosphorylated, plays a role in filament reorganization. Involved in the delivery of mutated CFTR to the plasma membrane. Together with KRT8, is involved in interleukin-6 (IL-6)-mediated barrier protection.

#### **Cellular Location**

Nucleus matrix {ECO:0000250|UniProtKB:Q5BJY9}. Cytoplasm, perinuclear region. Nucleus, nucleolus. Cytoplasm {ECO:0000250|UniProtKB:Q5BJY9}

#### **Tissue Location**

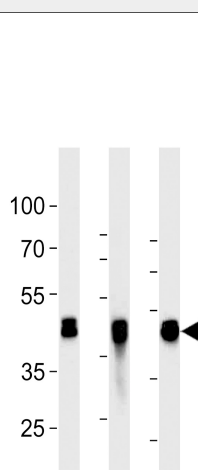
Expressed in colon, placenta, liver and very weakly in exocervix. Increased expression observed in lymph nodes of breast carcinoma.

### **CYK18 Antibody (C-term) - Protocols**

Provided below are standard protocols that you may find useful for product applications.

- [Western Blot](#)
- [Blocking Peptides](#)
- [Dot Blot](#)
- [Immunohistochemistry](#)
- [Immunofluorescence](#)
- [Immunoprecipitation](#)
- [Flow Cytometry](#)
- [Cell Culture](#)

### **CYK18 Antibody (C-term) - Images**



All lanes : Anti-CYK18 Antibody (C-term) at 1:2000 dilution Lane 1: HepG2 whole cell lysates Lane 2: K562 whole cell lysates Lane 3: NCI-H460 whole cell lysates Lysates/proteins at 20 µg per lane. Secondary Goat Anti-mouse IgG, (H+L), Peroxidase conjugated at 1/10000 dilution Predicted band size : 48 kDa Blocking/Dilution buffer: 5% NFDM/TBST.

### **CYK18 Antibody (C-term) - Background**

Involved in the uptake of thrombin-antithrombin complexes by hepatic cells (By similarity). When phosphorylated, plays a role in filament reorganization. Involved in the delivery of mutated CFTR to

the plasma membrane. Together with KRT8, is involved in interleukin-6 (IL-6)-mediated barrier protection.

#### **CYK18 Antibody (C-term) - References**

Oshima R.G., et al. Differentiation 33:61-68(1986).  
Kim J.W., et al. Submitted (SEP-2004) to the EMBL/GenBank/DDBJ databases.  
Kalnine N., et al. Submitted (OCT-2004) to the EMBL/GenBank/DDBJ databases.  
Suzuki Y., et al. Submitted (APR-2005) to the EMBL/GenBank/DDBJ databases.  
Kulesh D.A., et al. Mol. Cell. Biol. 8:1540-1550(1988).