

**ERCC1 Antibody (C-term)**  
**Mouse Monoclonal Antibody (Mab)**  
**Catalog # AM2186b**

**Specification**

---

**ERCC1 Antibody (C-term) - Product Information**

Application	WB,E
Primary Accession	<a href="#">P07992</a>
Reactivity	Human
Host	Mouse
Clonality	Monoclonal
Isotype	IgM,k
Calculated MW	32562
Antigen Region	268-297

**ERCC1 Antibody (C-term) - Additional Information**

**Gene ID** 2067

**Other Names**

DNA excision repair protein ERCC-1, ERCC1

**Target/Specificity**

This ERCC1 antibody is generated from mice immunized with a KLH conjugated synthetic peptide between 268-297 amino acids from the C-terminal region of human ERCC1.

**Dilution**

WB~~1:2000

E~~Use at an assay dependent concentration.

**Format**

Purified monoclonal antibody supplied in PBS with 0.09% (W/V) sodium azide. This antibody is prepared by Euglobin precipitation followed by dialysis against PBS.

**Storage**

Maintain refrigerated at 2-8°C for up to 2 weeks. For long term storage store at -20°C in small aliquots to prevent freeze-thaw cycles.

**Precautions**

ERCC1 Antibody (C-term) is for research use only and not for use in diagnostic or therapeutic procedures.

**ERCC1 Antibody (C-term) - Protein Information**

**Name** ERCC1

**Function** [Isoform 1]: Non-catalytic component of a structure-specific DNA repair endonuclease responsible for the 5'-incision during DNA repair. Responsible, in conjunction with SLX4, for the

first step in the repair of interstrand cross-links (ICL). Participates in the processing of anaphase bridge-generating DNA structures, which consist in incompletely processed DNA lesions arising during S or G2 phase, and can result in cytokinesis failure. Also required for homology-directed repair (HDR) of DNA double-strand breaks, in conjunction with SLX4.

#### Cellular Location

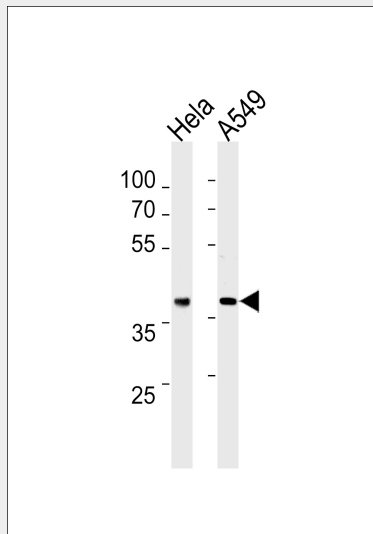
[Isoform 1]: Nucleus [Isoform 3]: Nucleus

#### ERCC1 Antibody (C-term) - Protocols

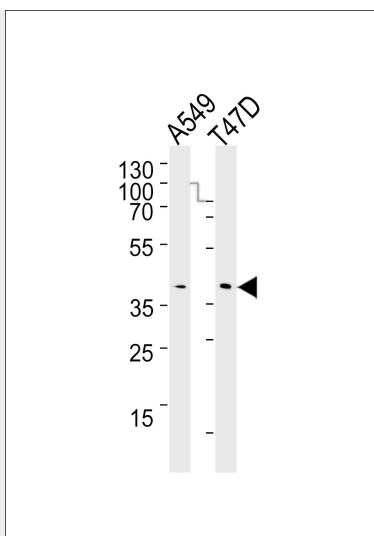
Provided below are standard protocols that you may find useful for product applications.

- [Western Blot](#)
- [Blocking Peptides](#)
- [Dot Blot](#)
- [Immunohistochemistry](#)
- [Immunofluorescence](#)
- [Immunoprecipitation](#)
- [Flow Cytometry](#)
- [Cell Culture](#)

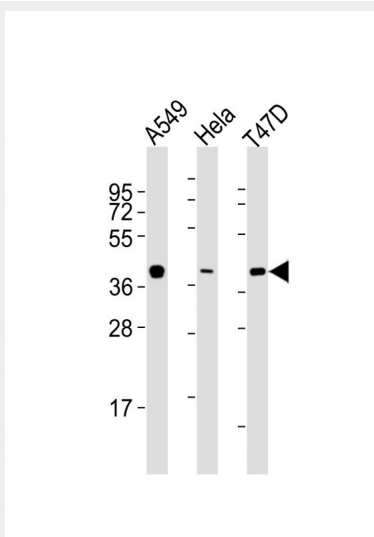
#### ERCC1 Antibody (C-term) - Images



ERCC1 Antibody (C-term) (Cat. #AM2186b) western blot analysis in HeLa,A549 cell line lysates (35µg/lane).This demonstrates the ERCC1 antibody detected the ERCC1 protein (arrow).



Western blot analysis of lysates from A549, T47D cell line (from left to right), using ERCC1 Antibody (C-term)(Cat. #AM2186b). AM2186b was diluted at 1:1000 at each lane. A goat anti-mouse IgM H&L(HRP) at 1:3000 dilution was used as the secondary antibody. Lysates at 20 $\mu$ g per lane.



All lanes : Anti-ERCC1 Antibody (C-term) at 1:2000 dilution Lane 1: A549 whole cell lysates Lane 2: HeLa whole cell lysates Lane 3: T47D whole cell lysates Lysates/proteins at 20  $\mu$ g per lane. Secondary Goat Anti-mouse IgM, (H+L), Peroxidase conjugated at 1/10000 dilution Predicted band size : 33 kDa Blocking/Dilution buffer: 5% NFD/MTBST.

### **ERCC1 Antibody (C-term) - Background**

Structure-specific DNA repair endonuclease responsible for the 5'-incision during DNA repair.

### **ERCC1 Antibody (C-term) - References**

- van Duin M., et al. Cell 44:913-923(1986).
- Hoeijmakers J.H.J., et al. Cold Spring Harb. Symp. Quant. Biol. 51:91-101(1986).
- Yu J.J., et al. Mutat. Res. 382:13-20(1997).
- Hisatomi H., et al. Submitted (AUG-2001) to the EMBL/GenBank/DDBJ databases.
- Kalnina N., et al. Submitted (MAY-2003) to the EMBL/GenBank/DDBJ databases.