

NFKBIA Antibody
Mouse Monoclonal Antibody (Mab)
Catalog # AM2205b**Specification**

NFKBIA Antibody - Product Information

Application	WB,E
Primary Accession	P25963
Reactivity	Human
Host	Mouse
Clonality	Monoclonal
Isotype	IgG1, κ
Calculated MW	35609

NFKBIA Antibody - Additional Information**Gene ID** 4792**Other Names**

NF-kappa-B inhibitor alpha, I-kappa-B-alpha, I κ B-alpha, IkappaBalpha, Major histocompatibility complex enhancer-binding protein MAD3, NFKBIA, IKBA, MAD3, NFKBI

Target/Specificity

Purified His-tagged NFKBIA protein was used to produced this monoclonal antibody.

Dilution

WB~~1:1000

E~~Use at an assay dependent concentration.

Format

Purified monoclonal antibody supplied in PBS with 0.09% (W/V) sodium azide. This antibody is purified through a protein G column, followed by dialysis against PBS.

Storage

Maintain refrigerated at 2-8°C for up to 2 weeks. For long term storage store at -20°C in small aliquots to prevent freeze-thaw cycles.

Precautions

NFKBIA Antibody is for research use only and not for use in diagnostic or therapeutic procedures.

NFKBIA Antibody - Protein Information**Name** NFKBIA**Synonyms** IKBA, MAD3, NFKBI**Function** Inhibits the activity of dimeric NF-kappa-B/REL complexes by trapping REL (RELA/p65 and NFKB1/p50) dimers in the cytoplasm by masking their nuclear localization signals

(PubMed:[1493333](#), PubMed:[36651806](#), PubMed:[7479976](#)). On cellular stimulation by immune and pro-inflammatory responses, becomes phosphorylated promoting ubiquitination and degradation, enabling the dimeric RELA to translocate to the nucleus and activate transcription (PubMed:[7479976](#), PubMed:[7628694](#), PubMed:[7796813](#), PubMed:[7878466](#)).

Cellular Location

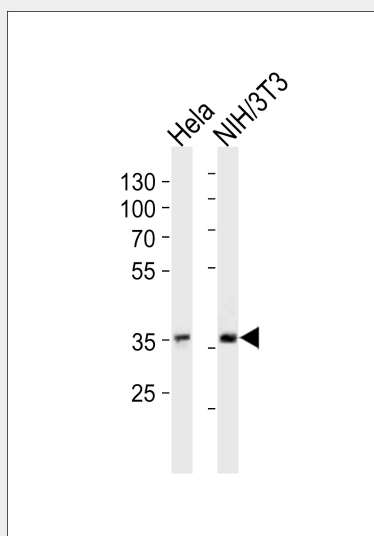
Cytoplasm. Nucleus. Note=Shuttles between the nucleus and the cytoplasm by a nuclear localization signal (NLS) and a CRM1-dependent nuclear export.

NFKBIA Antibody - Protocols

Provided below are standard protocols that you may find useful for product applications.

- [Western Blot](#)
- [Blocking Peptides](#)
- [Dot Blot](#)
- [Immunohistochemistry](#)
- [Immunofluorescence](#)
- [Immunoprecipitation](#)
- [Flow Cytometry](#)
- [Cell Culture](#)

NFKBIA Antibody - Images



NFKBIA Antibody (Cat. #AM2205b) western blot analysis in HeLa, mouse NIH/3T3 cell line lysates (35µg/lane). This demonstrates the NFKBIA antibody detected the NFKBIA protein (arrow).

NFKBIA Antibody - Background

Inhibits the activity of dimeric NF-kappa-B/REL complexes by trapping REL dimers in the cytoplasm through masking of their nuclear localization signals. On cellular stimulation by immune and proinflammatory responses, becomes phosphorylated promoting ubiquitination and degradation, enabling the dimeric RELA to translocate to the nucleus and activate transcription.

NFKBIA Antibody - References

Huxford T., et al. Cell 95:759-770(1998).

Cockman M.E., et al. Proc. Natl. Acad. Sci. U.S.A. 103:14767-14772(2006).
Haskill S., et al. Cell 65:1281-1289(1991).
Jungnickel B., et al. J. Exp. Med. 191:395-402(2000).
Liu B., et al. Submitted (APR-2001) to the EMBL/GenBank/DDBJ databases.