

BCL2L1 Antibody
Mouse Monoclonal Antibody (Mab)
Catalog # AM2211b**Specification**

BCL2L1 Antibody - Product Information

Application	WB,E
Primary Accession	Q07817
Reactivity	Human, Mouse, Rat
Host	Mouse
Clonality	Monoclonal
Isotype	IgG1
Calculated MW	26049

BCL2L1 Antibody - Additional Information**Gene ID** 598**Other Names**

Bcl-2-like protein 1, Bcl2-L-1, Apoptosis regulator Bcl-X, BCL2L1, BCL2L, BCLX

Target/Specificity

Purified His-tagged BCL2L1 protein was used to produced this monoclonal antibody.

Dilution

WB~~1:1000

E~~Use at an assay dependent concentration.

Format

Purified monoclonal antibody supplied in PBS with 0.09% (W/V) sodium azide. This antibody is purified through a protein G column, followed by dialysis against PBS.

Storage

Maintain refrigerated at 2-8°C for up to 2 weeks. For long term storage store at -20°C in small aliquots to prevent freeze-thaw cycles.

Precautions

BCL2L1 Antibody is for research use only and not for use in diagnostic or therapeutic procedures.

BCL2L1 Antibody - Protein Information**Name** BCL2L1**Synonyms** BCL2L, BCLX**Function** Potent inhibitor of cell death. Inhibits activation of caspases. Appears to regulate cell death by blocking the voltage- dependent anion channel (VDAC) by binding to it and preventing the release of the caspase activator, CYC1, from the mitochondrial membrane. Also acts as a

regulator of G2 checkpoint and progression to cytokinesis during mitosis. Isoform Bcl-X(S) promotes apoptosis.

Cellular Location

[Isoform Bcl-X(L)]: Mitochondrion inner membrane. Mitochondrion outer membrane Mitochondrion matrix. Cytoplasmic vesicle, secretory vesicle, synaptic vesicle membrane. Cytoplasm, cytosol. Cytoplasm, cytoskeleton, microtubule organizing center, centrosome. Nucleus membrane; Single-pass membrane protein; Cytoplasmic side. Note=After neuronal stimulation, translocates from cytosol to synaptic vesicle and mitochondrion membrane in a calmodulin-dependent manner (By similarity). Localizes to the centrosome when phosphorylated at Ser-49

Tissue Location

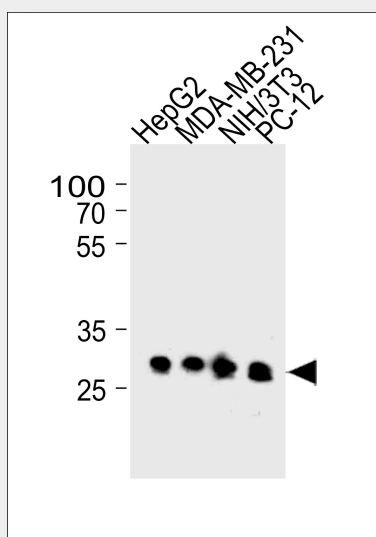
Bcl-X(S) is expressed at high levels in cells that undergo a high rate of turnover, such as developing lymphocytes. In contrast, Bcl-X(L) is found in tissues containing long-lived postmitotic cells, such as adult brain

BCL2L1 Antibody - Protocols

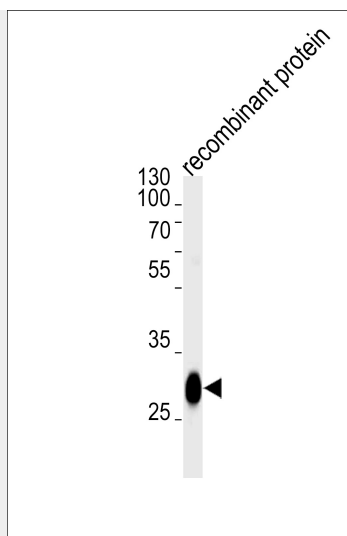
Provided below are standard protocols that you may find useful for product applications.

- [Western Blot](#)
- [Blocking Peptides](#)
- [Dot Blot](#)
- [Immunohistochemistry](#)
- [Immunofluorescence](#)
- [Immunoprecipitation](#)
- [Flow Cytometry](#)
- [Cell Culture](#)

BCL2L1 Antibody - Images



BCL2L1 Antibody(Cat. #AM2211b) western blot analysis in HepG2,MDA-MB-231,mouse NIH/3T3 and rat PC-12 cell line lysates (35µg/lane).This demonstrates the BCL2L1 antibody detected the BCL2L1 protein (arrow).



BCL2L1 Antibody (Cat. #AM2211b) western blot analysis in recombinant protein lysates (35µg/lane). This demonstrates the BCL2L1 antibody detected the BCL2L1 protein (arrow).

BCL2L1 Antibody - Background

Potent inhibitor of cell death. Inhibits activation of caspases (By similarity). Appears to regulate cell death by blocking the voltage-dependent anion channel (VDAC) by binding to it and preventing the release of the caspase activator, CYC1, from the mitochondrial membrane. Also acts as a regulator of G2 checkpoint and progression to cytokinesis during mitosis. Isoform Bcl-X(S) promotes apoptosis.

BCL2L1 Antibody - References

Boise L.H., et al. Cell 74:597-608(1993).
Ban J., et al. Biochem. Biophys. Res. Commun. 248:147-152(1998).
Inohara N., et al. Submitted (OCT-1996) to the EMBL/GenBank/DBJ databases.
Bechtel S., et al. BMC Genomics 8:399-399(2007).
Kalline N., et al. Submitted (OCT-2004) to the EMBL/GenBank/DBJ databases.