

**CCRK Antibody (N-term)**  
**Mouse Monoclonal Antibody (Mab)**  
**Catalog # AM2214b****Specification**

---

**CCRK Antibody (N-term) - Product Information**

Application	WB,E
Primary Accession	<a href="#">Q8IZL9</a>
Reactivity	Human
Host	Mouse
Clonality	Monoclonal
Isotype	IgG1
Calculated MW	38695

**CCRK Antibody (N-term) - Additional Information****Gene ID** 23552**Other Names**

Cyclin-dependent kinase 20, CDK-activating kinase p42, CAK-kinase p42, Cell cycle-related kinase, Cell division protein kinase 20, Cyclin-dependent protein kinase H, Cyclin-kinase-activating kinase p42, CDK20, CCRK, CDCH

**Target/Specificity**

Purified His-tagged CCRK protein was used to produced this monoclonal antibody.

**Dilution**

WB~~1:1000

E~~Use at an assay dependent concentration.

**Format**

Purified monoclonal antibody supplied in PBS with 0.09% (W/V) sodium azide. This antibody is purified through a protein G column, followed by dialysis against PBS.

**Storage**

Maintain refrigerated at 2-8°C for up to 2 weeks. For long term storage store at -20°C in small aliquots to prevent freeze-thaw cycles.

**Precautions**

CCRK Antibody (N-term) is for research use only and not for use in diagnostic or therapeutic procedures.

**CCRK Antibody (N-term) - Protein Information****Name** CDK20**Synonyms** CCRK, CDCH

**Function** Required for high-level Shh responses in the developing neural tube. Together with TBC1D32, controls the structure of the primary cilium by coordinating assembly of the ciliary membrane and axoneme, allowing GLI2 to be properly activated in response to SHH signaling (By similarity). Involved in cell growth. Activates CDK2, a kinase involved in the control of the cell cycle, by phosphorylating residue 'Thr-160'.

#### Cellular Location

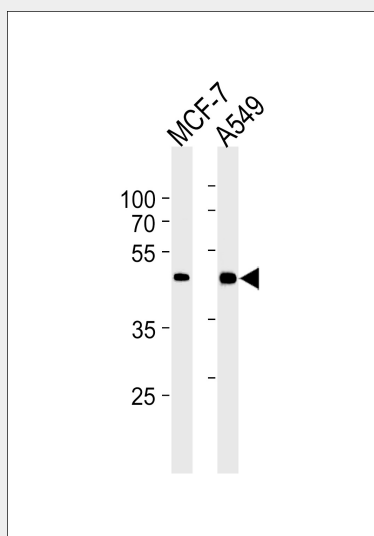
Nucleus. Cytoplasm. Cell projection, cilium

### CCRK Antibody (N-term) - Protocols

Provided below are standard protocols that you may find useful for product applications.

- [Western Blot](#)
- [Blocking Peptides](#)
- [Dot Blot](#)
- [Immunohistochemistry](#)
- [Immunofluorescence](#)
- [Immunoprecipitation](#)
- [Flow Cytometry](#)
- [Cell Culture](#)

### CCRK Antibody (N-term) - Images



CCRK Antibody (N-term)(Cat. #AM2214b) western blot analysis in MCF-7,A549 cell line lysates (35µg/lane).This demonstrates the CCRK antibody detected the CCRK protein (arrow).

### CCRK Antibody (N-term) - Background

Required for high-level Shh responses in the developing neural tube. Together with BROMI, controls the structure of the primary cilium by coordinating assembly of the ciliary membrane and axoneme, allowing GLI2 to be properly activated in response to SHH signaling (By similarity). Involved in cell growth. Activates CDK2, a kinase involved in the control of the cell cycle, by phosphorylating residue 'Thr-160'.

### CCRK Antibody (N-term) - References

Liu Y., et al. J. Biol. Chem. 279:4507-4514(2004).  
Wang L.Y., et al. Oncogene 31:2907-2918(2012).  
Qiu H., et al. Submitted (JAN-2005) to the EMBL/GenBank/DDBJ databases.  
Ota T., et al. Nat. Genet. 36:40-45(2004).  
Humphray S.J., et al. Nature 429:369-374(2004).