

MGMT Antibody
Mouse Monoclonal Antibody (Mab)
Catalog # AM2217b**Specification**

MGMT Antibody - Product Information

Application	IHC-P, IF, WB,E
Primary Accession	P16455
Reactivity	Human
Host	Mouse
Clonality	Monoclonal
Isotype	IgG1
Calculated MW	21646

MGMT Antibody - Additional Information**Gene ID** 4255**Other Names**

Methylated-DNA--protein-cysteine methyltransferase, 6-O-methylguanine-DNA methyltransferase, MGMT, O-6-methylguanine-DNA-alkyltransferase, MGMT

Target/Specificity

Purified His-tagged MGMT protein was used to produced this monoclonal antibody.

Dilution

IHC-P~~1:25

IF~~1:25

WB~~1:1000

E~~Use at an assay dependent concentration.

Format

Purified monoclonal antibody supplied in PBS with 0.09% (W/V) sodium azide. This antibody is purified through a protein G column, followed by dialysis against PBS.

Storage

Maintain refrigerated at 2-8°C for up to 2 weeks. For long term storage store at -20°C in small aliquots to prevent freeze-thaw cycles.

Precautions

MGMT Antibody is for research use only and not for use in diagnostic or therapeutic procedures.

MGMT Antibody - Protein Information**Name** MGMT

Function Involved in the cellular defense against the biological effects of O6-methylguanine (O6-MeG) and O4-methylthymine (O4-MeT) in DNA. Repairs the methylated nucleobase in DNA by

stoichiometrically transferring the methyl group to a cysteine residue in the enzyme. This is a suicide reaction: the enzyme is irreversibly inactivated.

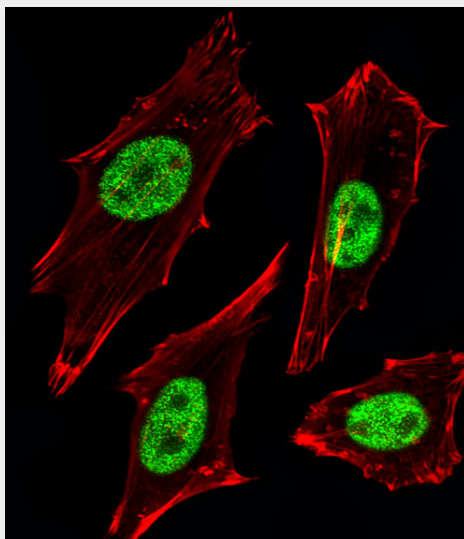
Cellular Location

Nucleus.

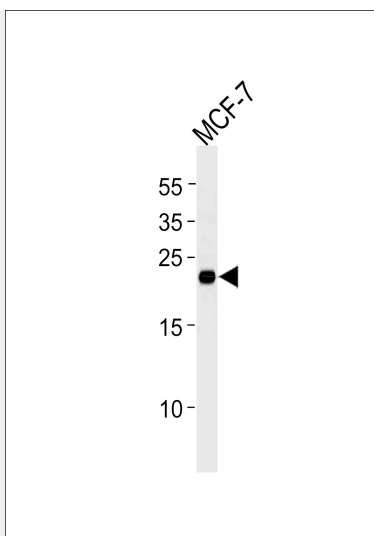
MGMT Antibody - Protocols

Provided below are standard protocols that you may find useful for product applications.

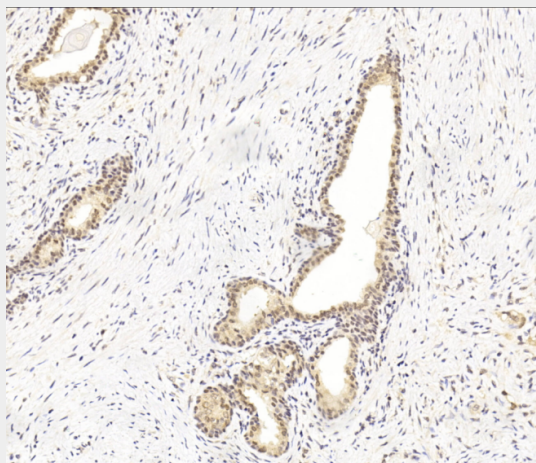
- [Western Blot](#)
- [Blocking Peptides](#)
- [Dot Blot](#)
- [Immunohistochemistry](#)
- [Immunofluorescence](#)
- [Immunoprecipitation](#)
- [Flow Cytometry](#)
- [Cell Culture](#)

MGMT Antibody - Images

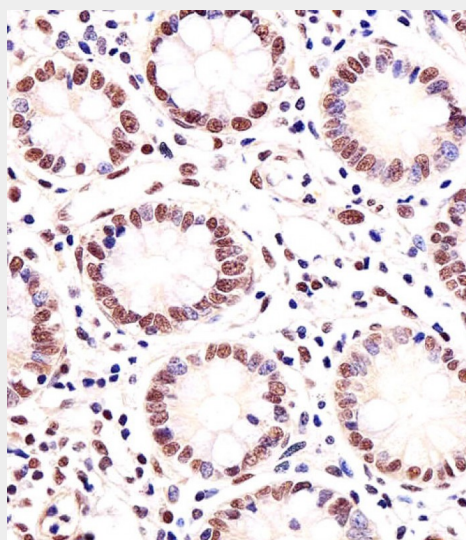
Fluorescent image of HeLa cells stained with MGMT Antibody (Cat#AM2217B). AM2217B was diluted at 1:25 dilution. An Alexa Fluor® 488-conjugated goat anti-mouse IgG at 1:400 dilution was used as the secondary antibody (green). Cytoplasmic actin was counterstained with Alexa Fluor® 555 conjugated with Phalloidin (red).



MGMT Antibody(Cat. #AM2217b) western blot analysis in MCF-7 cell line lysates (35µg/lane). This demonstrates the MGMT antibody detected the MGMT protein (arrow).



Immunohistochemical analysis of paraffin-embedded Human Prostate cancer section using Pink1(Cat#AM2217b). AM2217b was diluted at 1:100 dilution. A undiluted biotinylated goat polyvalent antibody was used as the secondary, followed by DAB staining.



Immunohistochemical analysis of paraffin-embedded H. small intestine section using MGMT Antibody(Cat#AM2217B). AM2217B was diluted at 1:25 dilution. A undiluted biotinylated goat polyvalent antibody was used as the secondary, followed by DAB staining.

MGMT Antibody - Background

Involved in the cellular defense against the biological effects of O6-methylguanine (O6-MeG) in DNA. Repairs alkylated guanine in DNA by stoichiometrically transferring the alkyl group at the O-6 position to a cysteine residue in the enzyme. This is a suicide reaction: the enzyme is irreversibly inactivated.

MGMT Antibody - References

Edara S., et al. Carcinogenesis 16:1637-1642(1995).
Tano K., et al. Proc. Natl. Acad. Sci. U.S.A. 87:686-690(1990).
Rydberg B., et al. J. Biol. Chem. 265:9563-9569(1990).
Koike G., et al. J. Biol. Chem. 265:14754-14762(1990).
Hayakawa H., et al. J. Mol. Biol. 213:739-747(1990).