

**CREB3L4 Antibody (M01)**  
**Purified Mouse Monoclonal Antibody (Mab)**  
**Catalog # AM2245b****Specification**

---

**CREB3L4 Antibody (M01) - Product Information**

Application	WB,E
Primary Accession	<a href="#">Q8TEY5</a>
Reactivity	Human, Rat
Host	Mouse
Clonality	Monoclonal
Isotype	IgG1
Calculated MW	43432
Antigen Region	1-310

**CREB3L4 Antibody (M01) - Additional Information****Gene ID** 148327**Other Names**

Cyclic AMP-responsive element-binding protein 3-like protein 4, cAMP-responsive element-binding protein 3-like protein 4, Androgen-induced basic leucine zipper protein, AlbZIP, Attaching to CRE-like 1, ATCE1, Cyclic AMP-responsive element-binding protein 4, CREB-4, cAMP-responsive element-binding protein 4, Transcript induced in spermiogenesis protein 40, Tisp40, hJAL, Processed cyclic AMP-responsive element-binding protein 3-like protein 4, CREB3L4, AIBZIP, CREB4, JAL

**Target/Specificity**

This CREB3L4 antibody is generated from mice immunized with a recombinant between 1-300 amino acids from the region of human CREB3L4.

**Dilution**

WB~~1:1000

E~~Use at an assay dependent concentration.

**Format**

Purified monoclonal antibody supplied in PBS with 0.09% (W/V) sodium azide. This antibody is purified through a protein G column, eluted with high and low pH buffers and neutralized immediately, followed by dialysis against PBS.

**Storage**

Maintain refrigerated at 2-8°C for up to 2 weeks. For long term storage store at -20°C in small aliquots to prevent freeze-thaw cycles.

**Precautions**

CREB3L4 Antibody (M01) is for research use only and not for use in diagnostic or therapeutic procedures.

**CREB3L4 Antibody (M01) - Protein Information**

**Name** CREB3L4

**Synonyms** AIBZIP, CREB4, JAL

**Function** Transcriptional activator that may play a role in the unfolded protein response. Binds to the UPR element (UPRE) but not to CRE element. Preferentially binds DNA with to the consensus sequence 5'-T[GT]ACGT[GA][GT]-3' and has transcriptional activation activity from UPRE. Binds to NF-kappa-B site and has transcriptional activation activity from NF-kappa-B-containing regulatory elements (By similarity).

**Cellular Location**

Endoplasmic reticulum membrane; Single-pass type II membrane protein. Golgi apparatus membrane; Single- pass type II membrane protein. Note=May also be located in Golgi apparatus

**Tissue Location**

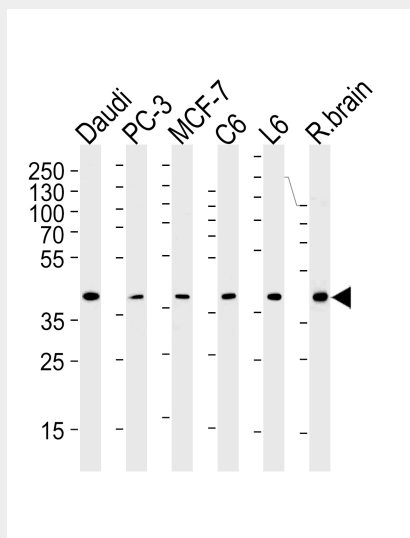
According to PubMed:11830526, exclusively expressed in the prostate. Expressed in breast and prostate cancer cell lines Expressed in prostatic luminal epithelial cells (at protein level) Expression is significantly more abundant in prostate cancer than in benign prostatic tissue (prostatic hyperplasia). According to PubMed:12111373, also expressed in brain, pancreas and skeletal muscle, and at lower levels in small intestine, testis, leukocyte and thymus

**CREB3L4 Antibody (M01) - Protocols**

Provided below are standard protocols that you may find useful for product applications.

- [Western Blot](#)
- [Blocking Peptides](#)
- [Dot Blot](#)
- [Immunohistochemistry](#)
- [Immunofluorescence](#)
- [Immunoprecipitation](#)
- [Flow Cytometry](#)
- [Cell Culture](#)

**CREB3L4 Antibody (M01) - Images**



CREB3L4 Antibody (M01) (Cat.# AM2245b) western blot analysis in Daudi,PC-3,MCF-7, rat C6 and L6 cell line ,rat brain tissue lysates (35µg/lane).This demonstrates the CREB3L4 (M01)antibody detected the CREB3L4 (M01)protein (arrow).

#### **CREB3L4 Antibody (M01) - Background**

Transcriptional activator that may play a role in the unfolded protein response. Binds to the UPR element (UPRE) but not to CRE element. Preferentially binds DNA with to the consensus sequence 5'-T[GT]ACGT[GA][GT]-3' and has transcriptional activation activity from UPRE. Binds to NF-kappa-B site and has transcriptional activation activity from NF-kappa-B-containing regulatory elements (By similarity).

#### **CREB3L4 Antibody (M01) - References**

Qi H.,et al.Cancer Res. 62:721-733(2002). Cao G.,et al.J. Hum. Genet. 47:373-376(2002). Fujita K.,et al. Submitted (DEC-2000) to the EMBL/GenBank/DDBJ databases.Guo J.H.,et al. Submitted (AUG-2001) to the EMBL/GenBank/DDBJ databases. Ota T.,et al.Nat. Genet. 36:40-45(2004).