

PHB Antibody
Purified Mouse Monoclonal Antibody (Mab)
Catalog # AM2247b**Specification**

PHB Antibody - Product Information

Application	IHC-P, WB,E
Primary Accession	P35232
Reactivity	Human, Mouse, Rat
Host	Mouse
Clonality	Monoclonal
Isotype	IgG2b,k
Calculated MW	29804
Antigen Region	1-205

PHB Antibody - Additional Information**Gene ID** 5245**Other Names**
Prohibitin, PHB**Target/Specificity**

This antibody is generated from a mice immunized with a recombinant protein between 1-205 amino acids from human.

Dilution

IHC-P~~1:25
WB~~1:1000
E~~Use at an assay dependent concentration.

Format

Purified monoclonal antibody supplied in PBS with 0.09% (W/V) sodium azide. This antibody is purified through a protein G column, followed by dialysis against PBS.

Storage

Maintain refrigerated at 2-8°C for up to 2 weeks. For long term storage store at -20°C in small aliquots to prevent freeze-thaw cycles.

Precautions

PHB Antibody is for research use only and not for use in diagnostic or therapeutic procedures.

PHB Antibody - Protein Information**Name** PHB1 {ECO:0000303|PubMed:28017329, ECO:0000312|HGNC:HGNC:8912}**Function** Protein with pleiotropic attributes mediated in a cell- compartment- and tissue-specific manner, which include the plasma membrane-associated cell signaling functions, mitochondrial

chaperone, and transcriptional co-regulator of transcription factors in the nucleus (PubMed:[11302691](#), PubMed:[20959514](#), PubMed:[28017329](#), PubMed:[31522117](#)). Plays a role in adipose tissue and glucose homeostasis in a sex-specific manner (By similarity). Contributes to pulmonary vascular remodeling by accelerating proliferation of pulmonary arterial smooth muscle cells (By similarity).

Cellular Location

Mitochondrion inner membrane. Nucleus. Cytoplasm. Cell membrane

Tissue Location

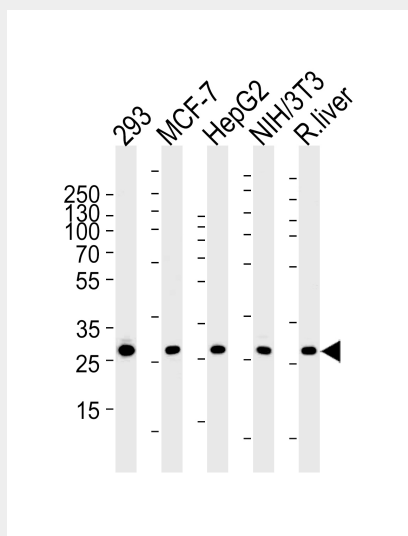
Widely expressed in different tissues.

PHB Antibody - Protocols

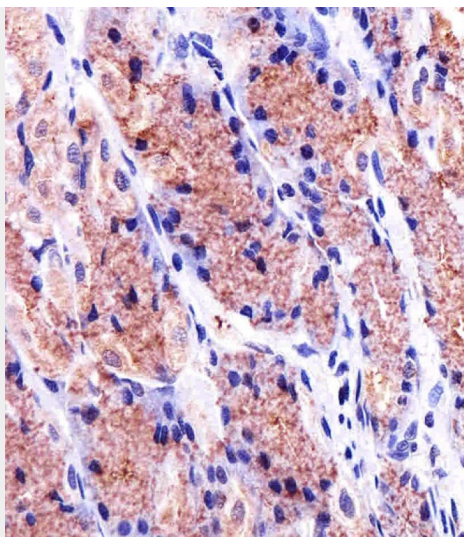
Provided below are standard protocols that you may find useful for product applications.

- [Western Blot](#)
- [Blocking Peptides](#)
- [Dot Blot](#)
- [Immunohistochemistry](#)
- [Immunofluorescence](#)
- [Immunoprecipitation](#)
- [Flow Cytometry](#)
- [Cell Culture](#)

PHB Antibody - Images



Western blot analysis of lysates from 293, MCF-7, HepG2, mouse NIH/3T3 cell line and rat liver tissue (from left to right), using USF1 Antibody (Center) (Cat. #AM2247b). AM2247b was diluted at 1:1000 at each lane. A goat anti-mouse IgG H&L(HRP) at 1:3000 dilution was used as the secondary antibody. Lysates at 35µg per lane.



Immunohistochemical analysis of paraffin-embedded H. stomach section using PHB Antibody(Cat#AM2247b). AM2247b was diluted at 1:25 dilution. A undiluted biotinylated goat polyvalent antibody was used as the secondary, followed by DAB staining.

PHB Antibody - Background

Prohibitin inhibits DNA synthesis. It has a role in regulating proliferation. As yet it is unclear if the protein or the mRNA exhibits this effect. May play a role in regulating mitochondrial respiration activity and in aging.

PHB Antibody - References

Sato T.,et al.Cancer Res. 52:1643-1646(1992).
Sato T.,et al.Genomics 17:762-764(1993).
Kalnine N.,et al.Submitted (MAY-2003) to the EMBL/GenBank/DDBJ databases.
Bienvenut W.V.,et al.Submitted (MAR-2005) to UniProtKB.
Lubec G.,et al.Submitted (DEC-2008) to UniProtKB.