

USF1 Antibody (Center)
Purified Mouse Monoclonal Antibody (Mab)
Catalog # AM2248b

Specification

USF1 Antibody (Center) - Product Information

Application	WB,E
Primary Accession	P22415
Reactivity	Human
Host	Mouse
Clonality	Monoclonal
Isotype	IgG1
Calculated MW	33538

USF1 Antibody (Center) - Additional Information

Gene ID 7391

Other Names

Upstream stimulatory factor 1, Class B basic helix-loop-helix protein 11, bHLHb11, Major late transcription factor 1, USF1, BHLHB11, USF

Target/Specificity

This USF1 antibody is generated from a mice immunized with a recombinant protein between 1-310 amino acids from the Central region of human USF1.

Dilution

WB~~1:500

E~~Use at an assay dependent concentration.

Format

Purified monoclonal antibody supplied in PBS with 0.09% (W/V) sodium azide. This antibody is purified through a protein G column, followed by dialysis against PBS.

Storage

Maintain refrigerated at 2-8°C for up to 2 weeks. For long term storage store at -20°C in small aliquots to prevent freeze-thaw cycles.

Precautions

USF1 Antibody (Center) is for research use only and not for use in diagnostic or therapeutic procedures.

USF1 Antibody (Center) - Protein Information

Name USF1

Synonyms BHLHB11, USF

Function Transcription factor that binds to a symmetrical DNA sequence (E-boxes) (5'-CACGTG-3') that is found in a variety of viral and cellular promoters.

Cellular Location

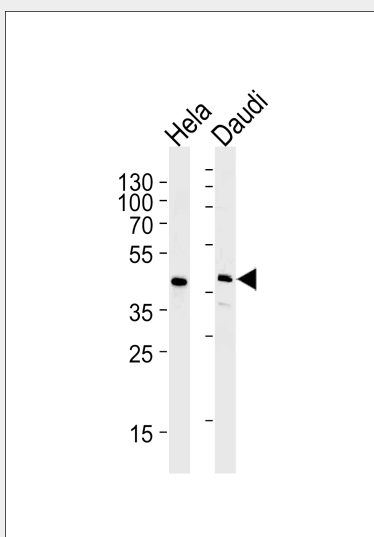
Nucleus.

USF1 Antibody (Center) - Protocols

Provided below are standard protocols that you may find useful for product applications.

- [Western Blot](#)
- [Blocking Peptides](#)
- [Dot Blot](#)
- [Immunohistochemistry](#)
- [Immunofluorescence](#)
- [Immunoprecipitation](#)
- [Flow Cytometry](#)
- [Cell Culture](#)

USF1 Antibody (Center) - Images



Western blot analysis of lysates from HeLa, Daudi cell line (from left to right), using CREB3L4 Antibody (monoclonal) (M01) (Cat. #AM2248b). AM2248b was diluted at 1:1000 at each lane. A goat anti-mouse IgG H&L (HRP) at 1:3000 dilution was used as the secondary antibody. Lysates at 35 µg per lane.

USF1 Antibody (Center) - Background

Transcription factor that binds to a symmetrical DNA sequence (E-boxes) (5'-CACGTG-3') that is found in a variety of viral and cellular promoters.

USF1 Antibody (Center) - References

Gregor P.D., et al. *Genes Dev.* 4:1730-1740 (1990).
Fukamizu A., et al. Submitted (SEP-1998) to the EMBL/GenBank/DDBJ databases.
Saito T., et al. Submitted (DEC-2002) to the EMBL/GenBank/DDBJ databases.
Ota T., et al. *Nat. Genet.* 36:40-45 (2004).

Bechtel S.,et al.BMC Genomics 8:399-399(2007).