

**CBX8 Antibody (C-term)**  
**Purified Mouse Monoclonal Antibody (Mab)**  
**Catalog # AM8435c****Specification**

---

**CBX8 Antibody (C-term) - Product Information**

Application	FC, WB,E
Primary Accession	<a href="#">Q9HC52</a>
Reactivity	Human
Host	Mouse
Clonality	Monoclonal
Isotype	IgG1
Calculated MW	43396
Antigen Region	1-278

**CBX8 Antibody (C-term) - Additional Information****Gene ID** 57332**Other Names**

Chromobox protein homolog 8, Polycomb 3 homolog, Pc3, hPc3, Rectachrome 1, CBX8, PC3, RC1

**Target/Specificity**

This CBX8 antibody is generated from a mouse immunized with a KLH conjugated synthetic peptide between amino acids from the C-terminal region of human CBX8.

**Dilution**

FC~~1:25

WB~~1:1000

E~~Use at an assay dependent concentration.

**Format**

Purified monoclonal antibody supplied in PBS with 0.09% (W/V) sodium azide. This antibody is purified through a protein G column, followed by dialysis against PBS.

**Storage**

Maintain refrigerated at 2-8°C for up to 2 weeks. For long term storage store at -20°C in small aliquots to prevent freeze-thaw cycles.

**Precautions**

CBX8 Antibody (C-term) is for research use only and not for use in diagnostic or therapeutic procedures.

**CBX8 Antibody (C-term) - Protein Information****Name** CBX8**Synonyms** PC3, RC1

**Function** Component of a Polycomb group (PcG) multiprotein PRC1-like complex, a complex class required to maintain the transcriptionally repressive state of many genes, including Hox genes, throughout development. PcG PRC1 complex acts via chromatin remodeling and modification of histones; it mediates monoubiquitination of histone H2A 'Lys-119', rendering chromatin heritably changed in its expressibility.

**Cellular Location**

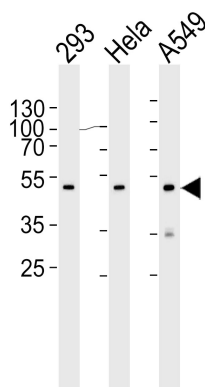
Nucleus.

**CBX8 Antibody (C-term) - Protocols**

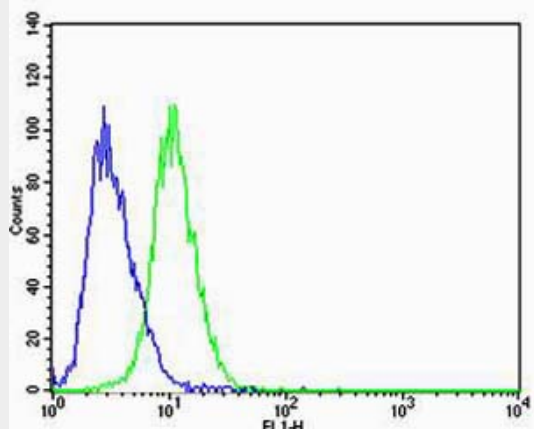
Provided below are standard protocols that you may find useful for product applications.

- [Western Blot](#)
- [Blocking Peptides](#)
- [Dot Blot](#)
- [Immunohistochemistry](#)
- [Immunofluorescence](#)
- [Immunoprecipitation](#)
- [Flow Cytometry](#)
- [Cell Culture](#)

**CBX8 Antibody (C-term) - Images**



Western blot analysis of lysates from 293, HeLa, A549 cell line (from left to right), using CBX8 Antibody (C-term)(Cat. #AM8435c). AM8435c was diluted at 1:1000 at each lane. A goat anti-mouse IgG H&L(HRP) at 1:3000 dilution was used as the secondary antibody. Lysates at 35µg per lane.



Flow cytometric analysis of A549 cells using CBX8 Antibody (C-term)(green, Cat#AM8435c) compared to an isotype control of mouse IgG1(blue). AP20600c was diluted at 1:25 dilution. An Alexa Fluor® 488 goat anti-mouse IgG at 1:400 dilution was used as the secondary antibody.

#### **CBX8 Antibody (C-term) - Background**

Component of a Polycomb group (PcG) multiprotein PRC1- like complex, a complex class required to maintain the transcriptionally repressive state of many genes, including Hox genes, throughout development. PcG PRC1 complex acts via chromatin remodeling and modification of histones; it mediates monoubiquitination of histone H2A 'Lys-119', rendering chromatin heritably changed in its expressibility.

#### **CBX8 Antibody (C-term) - References**

Bardos J.I.,et al.J. Biol. Chem. 275:28785-28792(2000).  
Michael M.Z.,et al.Submitted (DEC-2002) to the EMBL/GenBank/DDBJ databases.  
Ota T.,et al.Nat. Genet. 36:40-45(2004).  
Garcia-Cuellar M.P.,et al.Oncogene 20:411-419(2001).  
Levine S.S.,et al.Mol. Cell. Biol. 22:6070-6078(2002).