

EPHA6 Antibody
Purified Mouse Monoclonal Antibody (Mab)
Catalog # AM8444b**Specification**

EPHA6 Antibody - Product Information

Application	WB,E
Primary Accession	Q9UF33
Reactivity	Human
Host	Mouse
Clonality	Monoclonal
Isotype	IgG1,k
Calculated MW	116379

EPHA6 Antibody - Additional Information**Gene ID** 285220**Other Names**

Ephrin type-A receptor 6, EPH homology kinase 2, EHK-2, EPH-like kinase 12, EK12, EPHA6, EHK2, HEK12

Target/Specificity

This EPHA6 antibody is generated from a mouse immunized with a recombinant protein.

Dilution

WB~~1:1000

E~~Use at an assay dependent concentration.

Format

Purified monoclonal antibody supplied in PBS with 0.09% (W/V) sodium azide. This antibody is purified through a protein G column, followed by dialysis against PBS.

Storage

Maintain refrigerated at 2-8°C for up to 2 weeks. For long term storage store at -20°C in small aliquots to prevent freeze-thaw cycles.

Precautions

EPHA6 Antibody is for research use only and not for use in diagnostic or therapeutic procedures.

EPHA6 Antibody - Protein Information**Name** EPHA6**Synonyms** EHK2, HEK12**Function** Receptor tyrosine kinase which binds promiscuously GPI- anchored ephrin-A family ligands residing on adjacent cells, leading to contact-dependent bidirectional signaling into

neighboring cells. The signaling pathway downstream of the receptor is referred to as forward signaling while the signaling pathway downstream of the ephrin ligand is referred to as reverse signaling (By similarity).

Cellular Location

Membrane; Single-pass type I membrane protein

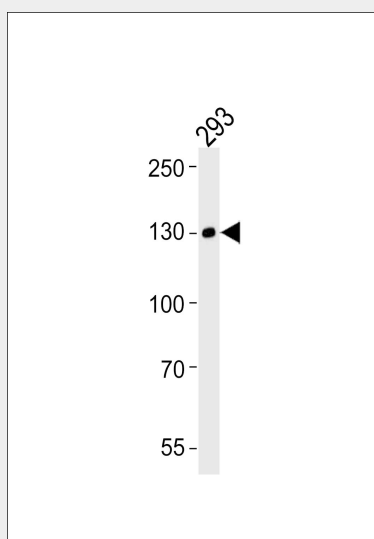
Tissue Location

Expressed in brain and testis.

EPHA6 Antibody - Protocols

Provided below are standard protocols that you may find useful for product applications.

- [Western Blot](#)
- [Blocking Peptides](#)
- [Dot Blot](#)
- [Immunohistochemistry](#)
- [Immunofluorescence](#)
- [Immunoprecipitation](#)
- [Flow Cytometry](#)
- [Cell Culture](#)

EPHA6 Antibody - Images

Western blot analysis of lysate from 293 cell line, using EPHA6 Antibody (Cat. #AM8444b). AM8444b was diluted at 1:1000. A goat anti-mouse IgG H&L (HRP) at 1:3000 dilution was used as the secondary antibody. Lysate at 20 µg.

EPHA6 Antibody - Background

Receptor tyrosine kinase which binds promiscuously GPI- anchored ephrin-A family ligands residing on adjacent cells, leading to contact-dependent bidirectional signaling into neighboring cells. The signaling pathway downstream of the receptor is referred to as forward signaling while the signaling pathway downstream of the ephrin ligand is referred to as reverse signaling (By similarity).

EPHA6 Antibody - References

Bechtel S.,et al.BMC Genomics 8:399-399(2007).
Muzny D.M.,et al.Nature 440:1194-1198(2006).
Hafner C.,et al.Clin. Chem. 50:490-499(2004).
Greenman C.,et al.Nature 446:153-158(2007).