

**CAPN6 Antibody**  
**Purified Mouse Monoclonal Antibody (Mab)**  
**Catalog # AM8453b****Specification**

---

**CAPN6 Antibody - Product Information**

Application	WB, FC,E
Primary Accession	<a href="#">O9Y6Q1</a>
Reactivity	Human
Host	Mouse
Clonality	Monoclonal
Isotype	IgG1

**CAPN6 Antibody - Additional Information****Gene ID** 827**Other Names**

Calpain-6, Calpain-like protease X-linked, Calpamodulin, CalpM, CAPN6, CALPM, CANPX

**Target/Specificity**

This CAPN6 antibody is generated from a mouse immunized with a recombinant protein of human CAPN6.

**Dilution**

WB~~1:1000

FC~~1:25

E~~Use at an assay dependent concentration.

**Format**

Purified monoclonal antibody supplied in PBS with 0.09% (W/V) sodium azide. This antibody is purified through a protein G column, followed by dialysis against PBS.

**Storage**

Maintain refrigerated at 2-8°C for up to 2 weeks. For long term storage store at -20°C in small aliquots to prevent freeze-thaw cycles.

**Precautions**

CAPN6 Antibody is for research use only and not for use in diagnostic or therapeutic procedures.

**CAPN6 Antibody - Protein Information****Name** CAPN6**Synonyms** CALPM, CANPX**Function** Microtubule-stabilizing protein that may be involved in the regulation of microtubule dynamics and cytoskeletal organization. May act as a regulator of RAC1 activity through

interaction with ARHGEF2 to control lamellipodial formation and cell mobility. Does not seem to have protease activity as it has lost the active site residues (By similarity).

**Cellular Location**

Cytoplasm, perinuclear region. Cytoplasm, cytoskeleton, spindle. Note=During mitose associated with the mitotic spindle. At telophase colocalized to the midbody spindle

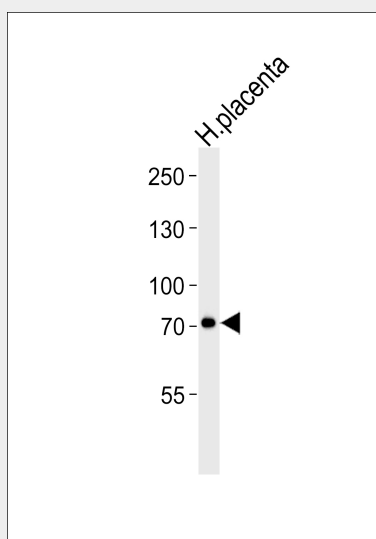
**Tissue Location**

Expressed only in placenta.

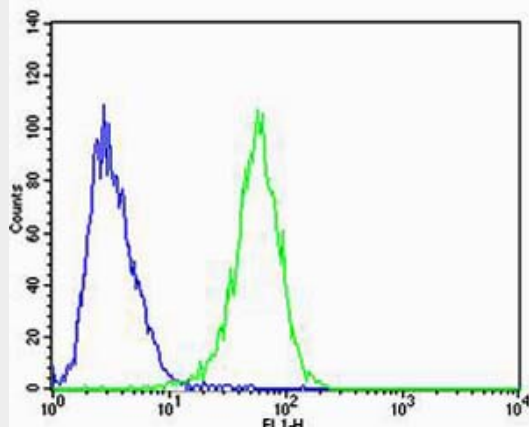
**CAPN6 Antibody - Protocols**

Provided below are standard protocols that you may find useful for product applications.

- [Western Blot](#)
- [Blocking Peptides](#)
- [Dot Blot](#)
- [Immunohistochemistry](#)
- [Immunofluorescence](#)
- [Immunoprecipitation](#)
- [Flow Cytometry](#)
- [Cell Culture](#)

**CAPN6 Antibody - Images**

Western blot analysis of lysate from human placenta tissue lysate, using CAPN6 Antibody (Cat. #AM8453b). AM8453b was diluted at 1:1000. A goat anti-mouse IgG H&L (HRP) at 1:3000 dilution was used as the secondary antibody. Lysate at 20µg.



Flow cytometric analysis of A549 cells using CAPN6 Antibody(green, Cat#) compared to an isotype control of mouse IgG1(blue). was diluted at 1:25 dilution. An Alexa Fluor® 488 goat anti-mouse IgG at 1:400 dilution was used as the secondary antibody.

### **CAPN6 Antibody - Background**

Microtubule-stabilizing protein that may be involved in the regulation of microtubule dynamics and cytoskeletal organization. May act as a regulator of RAC1 activity through interaction with ARHGEF2 to control lamellipodial formation and cell mobility. Does not seem to have protease activity as it has lost the active site residues (By similarity).

### **CAPN6 Antibody - References**

Dear T.N.,et al.Genomics 45:175-184(1997).  
Crotty P.L.,et al.Submitted (OCT-1997) to the EMBL/GenBank/DDBJ databases.  
Belsito A.,et al.Submitted (JUL-1997) to the EMBL/GenBank/DDBJ databases.  
Ross M.T.,et al.Nature 434:325-337(2005).  
Mural R.J.,et al.Submitted (SEP-2005) to the EMBL/GenBank/DDBJ databases.