

KIF1B Antibody
Purified Mouse Monoclonal Antibody (Mab)
Catalog # AM8480b**Specification**

KIF1B Antibody - Product Information

Application	WB,E
Primary Accession	O60333-3
Reactivity	Human, Rat
Host	Mouse
Clonality	monoclonal
Isotype	IgG1,k

KIF1B Antibody - Additional Information**Target/Specificity**

This KIF1B antibody is generated from a mouse immunized with a recombinant protein.

Dilution

WB~~1:2000

E~~Use at an assay dependent concentration.

Format

Purified monoclonal antibody supplied in PBS with 0.09% (W/V) sodium azide. This antibody is purified through a protein G column, followed by dialysis against PBS.

Storage

Maintain refrigerated at 2-8°C for up to 2 weeks. For long term storage store at -20°C in small aliquots to prevent freeze-thaw cycles.

Precautions

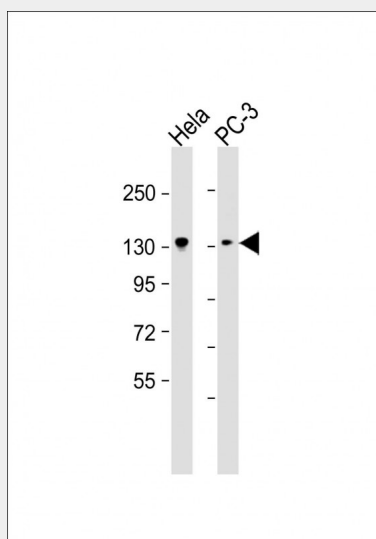
KIF1B Antibody is for research use only and not for use in diagnostic or therapeutic procedures.

KIF1B Antibody - Protein Information**KIF1B Antibody - Protocols**

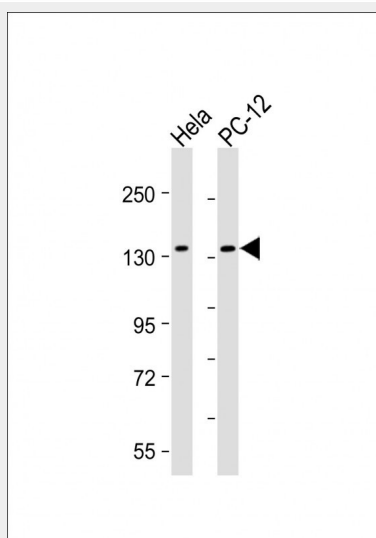
Provided below are standard protocols that you may find useful for product applications.

- [Western Blot](#)
- [Blocking Peptides](#)
- [Dot Blot](#)
- [Immunohistochemistry](#)
- [Immunofluorescence](#)
- [Immunoprecipitation](#)
- [Flow Cytometry](#)

- [Cell Culture](#)

KIF1B Antibody - Images


All lanes : Anti-KIF1B Antibody at 1:2000 dilution Lane 1: HeLa whole cell lysate Lane 2: PC-3 whole cell lysate Lysates/proteins at 20 µg per lane. Secondary Goat Anti-mouse IgG, (H+L), Peroxidase conjugated at 1/10000 dilution. Predicted band size : 130 kDa Blocking/Dilution buffer: 5% NFDM/TBST.



All lanes : Anti-KIF1B Antibody at 1:2000 dilution Lane 1: HeLa whole cell lysate Lane 2: PC-12 whole cell lysate Lysates/proteins at 20 µg per lane. Secondary Goat Anti-mouse IgG, (H+L), Peroxidase conjugated at 1/10000 dilution. Predicted band size : 130 kDa Blocking/Dilution buffer: 5% NFDM/TBST.