

RAB3B Antibody
Purified Mouse Monoclonal Antibody (Mab)
Catalog # AM8487b**Specification**

RAB3B Antibody - Product Information

Application	WB, IHC-P, FC,E
Primary Accession	P20337
Reactivity	Human, Mouse, Rat
Host	Mouse
Clonality	monoclonal
Isotype	IgG1,k
Calculated MW	24758

RAB3B Antibody - Additional Information**Gene ID** 5865**Other Names**

Ras-related protein Rab-3B, RAB3B

Target/Specificity

This RAB3B antibody is generated from a mouse immunized with a recombinant protein of human RAB3B.

Dilution

WB~~1:2000

IHC-P~~1:25

FC~~1:25

E~~Use at an assay dependent concentration.

Format

Purified monoclonal antibody supplied in PBS with 0.09% (W/V) sodium azide. This antibody is purified through a protein G column, followed by dialysis against PBS.

Storage

Maintain refrigerated at 2-8°C for up to 2 weeks. For long term storage store at -20°C in small aliquots to prevent freeze-thaw cycles.

Precautions

RAB3B Antibody is for research use only and not for use in diagnostic or therapeutic procedures.

RAB3B Antibody - Protein Information**Name** RAB3B ([HGNC:9778](#))

Function The small GTPases Rab are key regulators of intracellular membrane trafficking, from the formation of transport vesicles to their fusion with membranes (PubMed:[35871249](#)). Rabs

cycle between an inactive GDP-bound form and an active GTP-bound form that is able to recruit to membranes different sets of downstream effectors directly responsible for vesicle formation, movement, tethering and fusion (PubMed:[35871249](#)).

Cellular Location

Cell membrane; Lipid-anchor; Cytoplasmic side. Golgi apparatus

{ECO:0000250|UniProtKB:Q9CZT8}. Note=Colocalizes with GAS8/DRC4 in the Golgi apparatus.

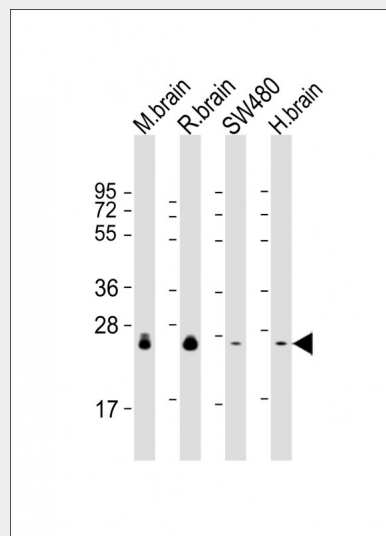
{ECO:0000250|UniProtKB:Q9CZT8}

RAB3B Antibody - Protocols

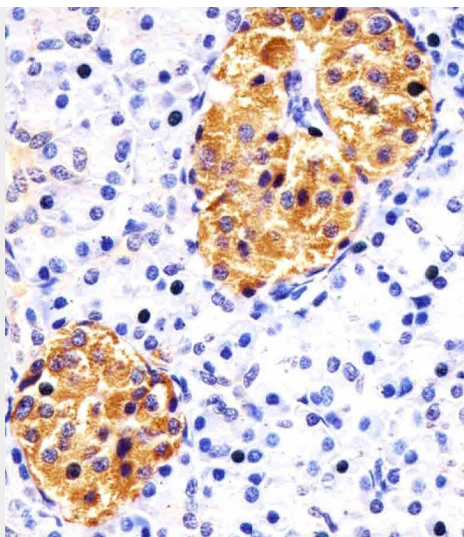
Provided below are standard protocols that you may find useful for product applications.

- [Western Blot](#)
- [Blocking Peptides](#)
- [Dot Blot](#)
- [Immunohistochemistry](#)
- [Immunofluorescence](#)
- [Immunoprecipitation](#)
- [Flow Cytometry](#)
- [Cell Culture](#)

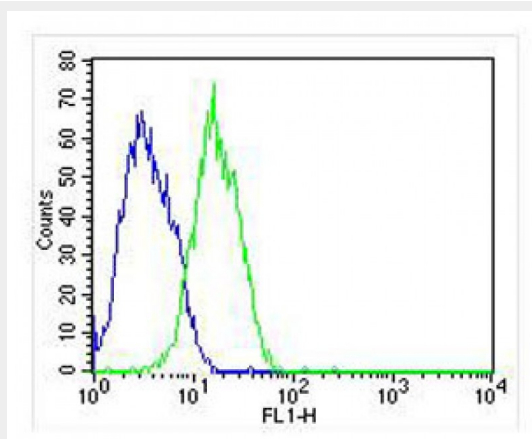
RAB3B Antibody - Images



All lanes : Anti-RAB3B Antibody at 1:2000 dilution Lane 1: mouse brain lysate Lane 2: rat brain lysate Lane 3: SW480 whole cell lysate Lane 4: human brain lysate Lysates/proteins at 20 µg per lane. Secondary Goat Anti-mouse IgG, (H+L), Peroxidase conjugated at 1/10000 dilution. Predicted band size : 25 kDa Blocking/Dilution buffer: 5% NFDM/TBST.



AM8487b staining RAB3B in human pancreas sections by Immunohistochemistry (IHC-P - paraformaldehyde-fixed, paraffin-embedded sections). Tissue was fixed with formaldehyde and blocked with 3% BSA for 0.5 hour at room temperature; antigen retrieval was by heat mediation with a citrate buffer (pH6). Samples were incubated with primary antibody (1/25) for 1 hour at 37°C. A undiluted biotinylated goat polyvalent antibody was used as the secondary antibody.



Overlay histogram showing HepG2 cells stained with AM8487b (green line). The cells were fixed with 2% paraformaldehyde (10 min) and then permeabilized with 90% methanol for 10 min. The cells were then incubated in 2% bovine serum albumin to block non-specific protein-protein interactions followed by the antibody (AM8487b, 1:25 dilution) for 60 min at 37°C. The secondary antibody used was Goat-Anti-Mouse IgG, DyLight® 488 Conjugated Highly Cross-Adsorbed (NA168821) at 1/400 dilution for 40 min at 37°C. Isotype control antibody (blue line) was mouse IgG (1 µg/1x10⁶ cells) used under the same conditions. Acquisition of >10,000 events was performed.

RAB3B Antibody - Background

Protein transport. Probably involved in vesicular traffic (By similarity).

RAB3B Antibody - References

- Zahraoui A., et al. J. Biol. Chem. 264:12394-12401(1989).
Puhl H.L. III, et al. Submitted (APR-2002) to the EMBL/GenBank/DDBJ databases.
Gregory S.G., et al. Nature 441:315-321(2006).
Rigbolt K.T., et al. Sci. Signal. 4:RS3-RS3(2011).

