

**TIMP2 Antibody**  
**Purified Mouse Monoclonal Antibody (Mab)**  
**Catalog # AM8492b****Specification**

---

**TIMP2 Antibody - Product Information**

Application	WB, IHC-P, FC, IF, E
Primary Accession	<a href="#">P16035</a>
Reactivity	Human
Host	Mouse
Clonality	monoclonal
Isotype	IgG1, κ
Calculated MW	24399

**TIMP2 Antibody - Additional Information****Gene ID** 7077**Other Names**

Metalloproteinase inhibitor 2, CSC-21K, Tissue inhibitor of metalloproteinases 2, TIMP-2, TIMP2

**Target/Specificity**

This TIMP2 antibody is generated from a mouse immunized with arecombinant protein of human TIMP2.

**Dilution**

WB~~1:500

IHC-P~~1:25

FC~~1:25

IF~~1:25

E~~Use at an assay dependent concentration.

**Format**

Purified monoclonal antibody supplied in PBS with 0.09% (W/V) sodium azide. This antibody is purified through a protein G column, followed by dialysis against PBS.

**Storage**

Maintain refrigerated at 2-8°C for up to 2 weeks. For long term storage store at -20°C in small aliquots to prevent freeze-thaw cycles.

**Precautions**

TIMP2 Antibody is for research use only and not for use in diagnostic or therapeutic procedures.

**TIMP2 Antibody - Protein Information****Name** TIMP2**Function** Complexes with metalloproteinases (such as collagenases) and irreversibly inactivates

them by binding to their catalytic zinc cofactor. Known to act on MMP-1, MMP-2, MMP-3, MMP-7, MMP-8, MMP-9, MMP-10, MMP-13, MMP-14, MMP-15, MMP-16 and MMP-19.

#### Cellular Location

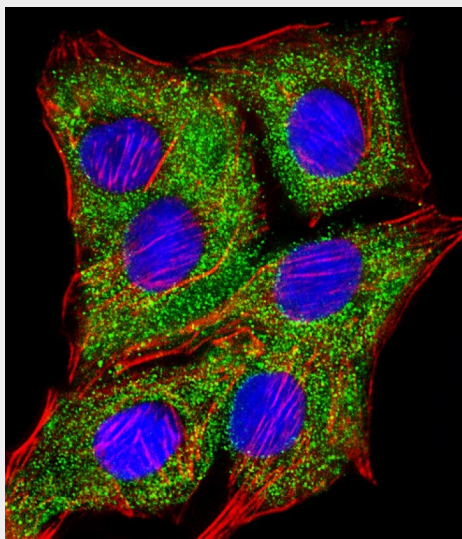
Secreted.

#### TIMP2 Antibody - Protocols

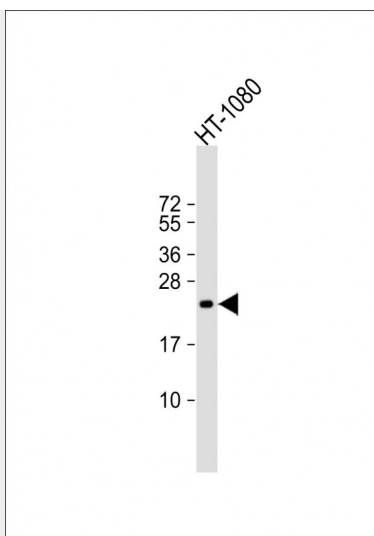
Provided below are standard protocols that you may find useful for product applications.

- [Western Blot](#)
- [Blocking Peptides](#)
- [Dot Blot](#)
- [Immunohistochemistry](#)
- [Immunofluorescence](#)
- [Immunoprecipitation](#)
- [Flow Cytometry](#)
- [Cell Culture](#)

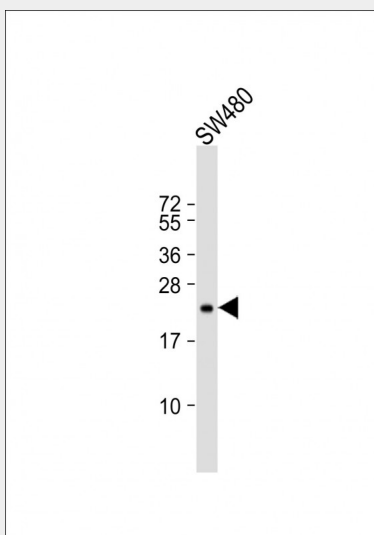
#### TIMP2 Antibody - Images



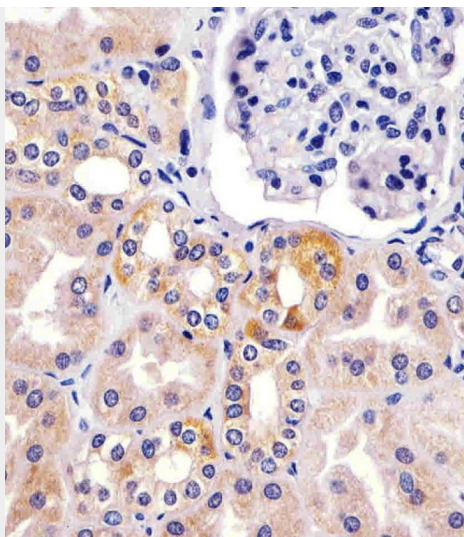
Immunofluorescent analysis of 4% paraformaldehyde-fixed, 0.1% Triton X-100 permeabilized A549 (human lung adenocarcinoma epithelial cell line) cells labeling TIMP2 with AM8492b at 1/25 dilution, followed by Dylight® 488-conjugated goat anti-mouse IgG (NA166821) secondary antibody at 1/200 dilution (green). Immunofluorescence image showing cytoplasm staining on A549 cell line. Cytoplasmic actin is detected with Dylight® 554 Phalloidin (PD18466410) at 1/100 dilution (red). The nuclear counter stain is DAPI (blue).



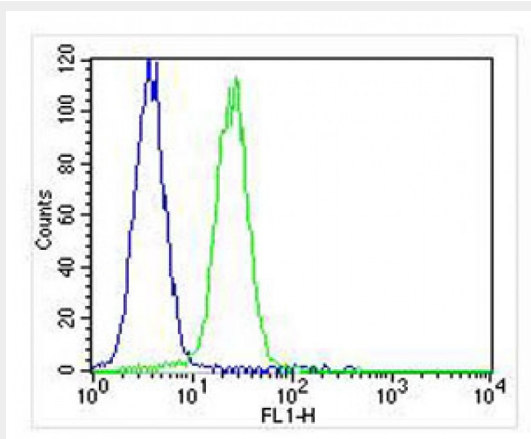
Anti-TIMP2 Antibody at 1:2000 dilution + HT-1080 whole cell lysate Lysates/proteins at 20 µg per lane. Secondary Goat Anti-mouse IgG, (H+L), Peroxidase conjugated at 1/10000 dilution. Predicted band size : 24 kDa Blocking/Dilution buffer: 5% NFDM/TBST.



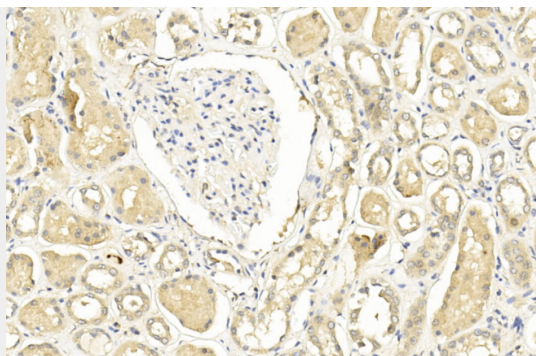
Anti-TIMP2 Antibody at 1:500 dilution + SW480 whole cell lysate Lysates/proteins at 20 µg per lane. Secondary Goat Anti-mouse IgG, (H+L), Peroxidase conjugated at 1/10000 dilution. Predicted band size : 24 kDa Blocking/Dilution buffer: 5% NFDM/TBST.



AM8492b staining TIMP2 in human kidney sections by Immunohistochemistry (IHC-P - paraformaldehyde-fixed, paraffin-embedded sections). Tissue was fixed with formaldehyde and blocked with 3% BSA for 0.5 hour at room temperature; antigen retrieval was by heat mediation with a citrate buffer (pH6). Samples were incubated with primary antibody (1/25) for 1 hour at 37°C. A undiluted biotinylated goat polyvalent antibody was used as the secondary antibody.



Overlay histogram showing K562 cells stained with AM8492b (green line). The cells were fixed with 2% paraformaldehyde (10 min) and then permeabilized with 90% methanol for 10 min. The cells were then incubated in 2% bovine serum albumin to block non-specific protein-protein interactions followed by the antibody (AM8492b, 1:25 dilution) for 60 min at 37°C. The secondary antibody used was Goat-Anti-Mouse IgG, DyLight® 488 Conjugated Highly Cross-Adsorbed (NA168821) at 1/400 dilution for 40 min at 37°C. Isotype control antibody (blue line) was mouse IgG1 (1 µg/1x10<sup>6</sup> cells) used under the same conditions. Acquisition of >10,000 events was performed.



Immunohistochemical analysis of paraffin-embedded Human kidney section using Pink1(Cat#AM8492b). AM8492b was diluted at 1:200 dilution. A undiluted biotinylated goat polyvalent antibody was used as the secondary, followed by DAB staining.

### **TIMP2 Antibody - Background**

Complexes with metalloproteinases (such as collagenases) and irreversibly inactivates them by binding to their catalytic zinc cofactor. Known to act on MMP-1, MMP-2, MMP-3, MMP-7, MMP-8, MMP-9, MMP-10, MMP-13, MMP-14, MMP-15, MMP-16 and MMP-19.

### **TIMP2 Antibody - References**

Stetler-Stevenson W.G.,et al.J. Biol. Chem. 265:13933-13938(1990).  
Boone T.C.,et al.Proc. Natl. Acad. Sci. U.S.A. 87:2800-2804(1990).  
Hammani K.,et al.J. Biol. Chem. 271:25498-25505(1996).  
Malik K.,et al.Submitted (AUG-1990) to the EMBL/GenBank/DDBJ databases.  
Stetler-Stevenson W.G.,et al.J. Biol. Chem. 264:17374-17378(1989).