

Beta-actin Antibody, HRP Conjugate
Purified Mouse Monoclonal Antibody (Mab)
Catalog # AM8502b**Specification**

Beta-actin Antibody, HRP Conjugate - Product Information

Application	WB,E
Primary Accession	P60709
Reactivity	Human
Host	Mouse
Clonality	monoclonal
Isotype	IgG1,Igk

Beta-actin Antibody, HRP Conjugate - Additional Information**Gene ID** 60**Other Names**
ACTB**Target/Specificity**

This Beta-actin antibody is generated from a mouse immunized with a recombinant protein.

Dilution

WB~~1:2000
E~~Use at an assay dependent concentration.

Format

PBS with 50% glycerol

Storage

Maintain refrigerated at 2-8°C for up to 2 weeks. For long term storage store at -20°C in small aliquots to prevent freeze-thaw cycles.

Precautions

Beta-actin Antibody, HRP Conjugate is for research use only and not for use in diagnostic or therapeutic procedures.

Beta-actin Antibody, HRP Conjugate - Protein Information**Name** ACTB

Function Actin is a highly conserved protein that polymerizes to produce filaments that form cross-linked networks in the cytoplasm of cells (PubMed:[25255767](#), PubMed:[29581253](#)). Actin exists in both monomeric (G-actin) and polymeric (F-actin) forms, both forms playing key functions, such as cell motility and contraction (PubMed:[29581253](#)). In addition to their role in the cytoplasmic cytoskeleton, G- and F- actin also localize in the nucleus, and regulate gene transcription and motility and repair of damaged DNA (PubMed:[29925947](#)). Plays a role in the

assembly of the gamma-tubulin ring complex (gTuRC), which regulates the minus-end nucleation of alpha-beta tubulin heterodimers that grow into microtubule protofilaments (PubMed:[39321809](#), PubMed:[38609661](#)). Part of the ACTR1A/ACTB filament around which the dynactin complex is built (By similarity). The dynactin multiprotein complex activates the molecular motor dynein for ultra-processive transport along microtubules (By similarity).

Cellular Location

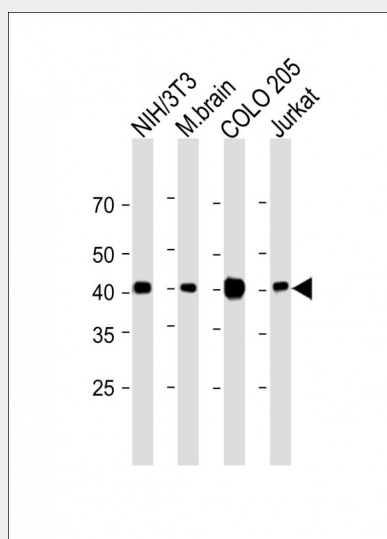
Cytoplasm, cytoskeleton. Nucleus Note=Localized in cytoplasmic mRNP granules containing untranslated mRNAs.

Beta-actin Antibody, HRP Conjugate - Protocols

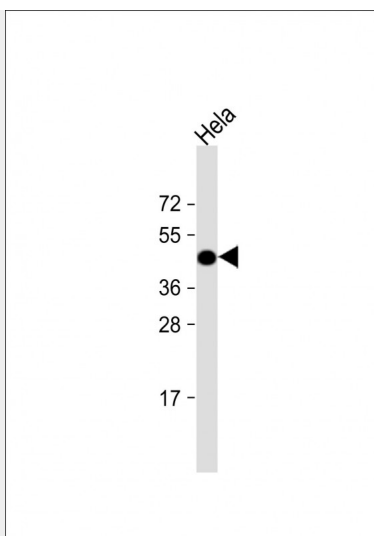
Provided below are standard protocols that you may find useful for product applications.

- [Western Blot](#)
- [Blocking Peptides](#)
- [Dot Blot](#)
- [Immunohistochemistry](#)
- [Immunofluorescence](#)
- [Immunoprecipitation](#)
- [Flow Cytometry](#)
- [Cell Culture](#)

Beta-actin Antibody, HRP Conjugate - Images



Anti-ACTB Antibody, HRP Conjugate at 1:2000 dilution Lane 1: NIH/3T3 whole cell lysate Lane 2: Mouse brain lysate Lane 3: COLO 205 whole cell lysate Lane 4: Jurkat whole cell lysate Lysates/proteins at 20 µg per lane. Observed band size: 42 KDa Blocking/Dilution buffer: 5% NFDM/TBST.



Anti-ACTB Antibody, HRP Conjugate at 1:2000 dilution + Hela whole cell lysate Lysates/proteins at 20 µg per lane. Predicted band size : 42 kDa Blocking/Dilution buffer: 5% NFDM/TBST.