

RRAS2 Antibody
Purified Mouse Monoclonal Antibody (Mab)
Catalog # AM8512b**Specification**

RRAS2 Antibody - Product Information

| | |
|-------------------|------------------------|
| Application | WB,E |
| Primary Accession | P62070 |
| Other Accession | P62071 |
| Reactivity | Human, Mouse |
| Predicted | Mouse |
| Host | Mouse |
| Clonality | monoclonal |
| Isotype | IgG1,k |
| Calculated MW | 23400 |

RRAS2 Antibody - Additional Information**Gene ID** 22800**Other Names**

Ras-related protein R-Ras2, Ras-like protein TC21, Teratocarcinoma oncogene, RRAS2, TC21

Target/Specificity

This RRAS2 antibody is generated from a mouse immunized with a recombinant protein of human RRAS2.

Dilution

WB~~1:4000

E~~Use at an assay dependent concentration.

Format

Purified monoclonal antibody supplied in PBS with 0.09% (W/V) sodium azide. This antibody is purified through a protein G column, followed by dialysis against PBS.

Storage

Maintain refrigerated at 2-8°C for up to 2 weeks. For long term storage store at -20°C in small aliquots to prevent freeze-thaw cycles.

Precautions

RRAS2 Antibody is for research use only and not for use in diagnostic or therapeutic procedures.

RRAS2 Antibody - Protein Information**Name** RRAS2 ([HGNC:17271](#))**Synonyms** TC21

Function GTP-binding protein with GTPase activity, involved in the regulation of MAPK signaling pathway and thereby controlling multiple cellular processes (PubMed:[31130282](#), PubMed:[31130285](#), PubMed:[39809765](#)). Regulates craniofacial development (PubMed:[31130282](#), PubMed:[31130285](#)).

Cellular Location

Cell membrane; Lipid-anchor; Cytoplasmic side. Golgi apparatus membrane; Lipid- anchor

Tissue Location

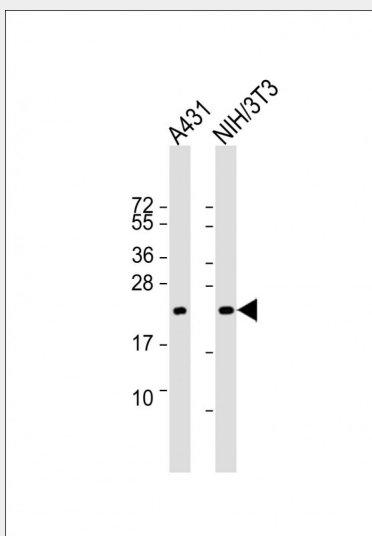
Ubiquitously present in all tissues examined, with the highest levels in heart, placenta, and skeletal muscle. Moderate levels in lung and liver; low levels in brain, kidney, and pancreas

RRAS2 Antibody - Protocols

Provided below are standard protocols that you may find useful for product applications.

- [Western Blot](#)
- [Blocking Peptides](#)
- [Dot Blot](#)
- [Immunohistochemistry](#)
- [Immunofluorescence](#)
- [Immunoprecipitation](#)
- [Flow Cytometry](#)
- [Cell Culture](#)

RRAS2 Antibody - Images



All lanes : Anti-RRAS2 Antibody at 1:4000 dilution Lane 1: A431 whole cell lysate Lane 2: NIH/3T3 whole cell lysate Lysates/proteins at 20 µg per lane. Secondary Goat Anti-mouse IgG, (H+L), Peroxidase conjugated at 1/10000 dilution. Predicted band size : 23 kDa Blocking/Dilution buffer: 5% NFD/MTBST.

RRAS2 Antibody - Background

It is a plasma membrane-associated GTP-binding protein with GTPase activity. Might transduce growth inhibitory signals across the cell membrane, exerting its effect through an effector shared with the Ras proteins but in an antagonistic fashion.

RRAS2 Antibody - References

Drivas G.T.,et al.Mol. Cell. Biol. 10:1793-1798(1990).
Chan A.M.-L.,et al.Proc. Natl. Acad. Sci. U.S.A. 91:7558-7562(1994).
Puhl H.L. III,et al.Submitted (MAR-2002) to the EMBL/GenBank/DDBJ databases.
Ota T.,et al.Nat. Genet. 36:40-45(2004).
Taylor T.D.,et al.Nature 440:497-500(2006).