

**RAB5B Antibody**  
**Purified Mouse Monoclonal Antibody (Mab)**  
**Catalog # AM8518B****Specification**

---

**RAB5B Antibody - Product Information**

Application	WB,E
Primary Accession	<a href="#">P61020</a>
Other Accession	<a href="#">P61021</a> , <a href="#">Q5RBG1</a>
Reactivity	Human, Mouse
Predicted	Mouse
Host	Mouse
Clonality	monoclonal
Isotype	IgG1,k

**RAB5B Antibody - Additional Information****Gene ID** 5869**Other Names**

Ras-related protein Rab-5B, RAB5B

**Target/Specificity**

This RAB5B antibody is generated from a mouse immunized with a recombinant protein of human RAB5B.

**Dilution**

WB~~1:2000

E~~Use at an assay dependent concentration.

**Format**

Purified monoclonal antibody supplied in PBS with 0.09% (W/V) sodium azide. This antibody is purified through a protein G column, followed by dialysis against PBS.

**Storage**

Maintain refrigerated at 2-8°C for up to 2 weeks. For long term storage store at -20°C in small aliquots to prevent freeze-thaw cycles.

**Precautions**

RAB5B Antibody is for research use only and not for use in diagnostic or therapeutic procedures.

**RAB5B Antibody - Protein Information****Name** RAB5B ([HGNC:9784](#))

**Function** The small GTPases Rab are key regulators of intracellular membrane trafficking, from the formation of transport vesicles to their fusion with membranes. Rabs cycle between an inactive GDP-bound form and an active GTP-bound form that is able to recruit to membranes

different sets of downstream effectors directly responsible for vesicle formation, movement, tethering and fusion.

#### Cellular Location

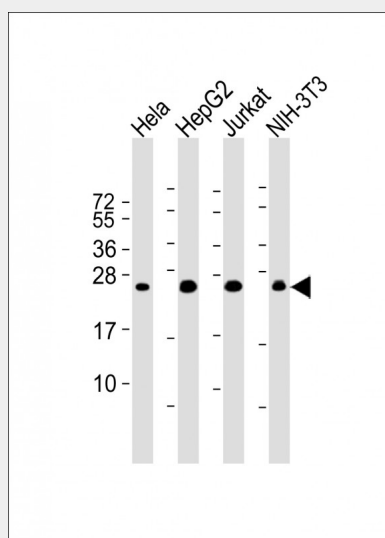
Cell membrane; Lipid-anchor; Cytoplasmic side. Early endosome membrane; Lipid-anchor. Melanosome. Note=Enriched in stage I melanosomes

#### RAB5B Antibody - Protocols

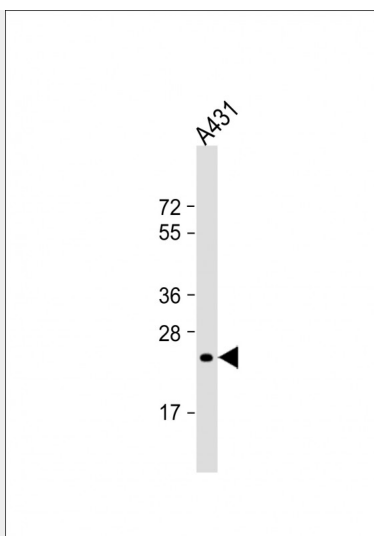
Provided below are standard protocols that you may find useful for product applications.

- [Western Blot](#)
- [Blocking Peptides](#)
- [Dot Blot](#)
- [Immunohistochemistry](#)
- [Immunofluorescence](#)
- [Immunoprecipitation](#)
- [Flow Cytometry](#)
- [Cell Culture](#)

#### RAB5B Antibody - Images



All lanes : Anti-RAB5B Antibody at 1:2000 dilution Lane 1: HeLa whole cell lysate Lane 2: HepG2 whole cell lysate Lane 3: Jurkat whole cell lysate Lane 4: NIH-3T3 whole cell lysate Lysates/proteins at 20 µg per lane. Secondary Goat Anti-mouse IgG, (H+L), Peroxidase conjugated at 1/10000 dilution. Predicted band size : 24 kDa Blocking/Dilution buffer: 5% NFDM/TBST.



Anti-RAB5B Antibody at 1:2000 dilution + A431 whole cell lysate Lysates/proteins at 20 µg per lane. Secondary Goat Anti-mouse IgG, (H+L), Peroxidase conjugated at 1/10000 dilution. Predicted band size : 24 kDa Blocking/Dilution buffer: 5% NFDM/TBST.

#### **RAB5B Antibody - Background**

Protein transport. Probably involved in vesicular traffic (By similarity).

#### **RAB5B Antibody - References**

Wilson D.B.,et al.J. Clin. Invest. 89:996-1005(1992).  
Puhl H.L. III,et al.Submitted (APR-2002) to the EMBL/GenBank/DDBJ databases.  
Ota T.,et al.Nat. Genet. 36:40-45(2004).  
Bechtel S.,et al.BMC Genomics 8:399-399(2007).  
Scherer S.E.,et al.Nature 440:346-351(2006).