

LAP2 Antibody
Purified Mouse Monoclonal Antibody (Mab)
Catalog # AM8519b**Specification**

LAP2 Antibody - Product Information

Application	WB,E
Primary Accession	Q96RT1
Reactivity	Human
Host	Mouse
Clonality	monoclonal
Isotype	IgG1,k
Calculated MW	158298

LAP2 Antibody - Additional Information**Gene ID** 55914**Other Names**

Protein LAP2, Densin-180-like protein, Erbb2-interacting protein, Erbin, ERBB2IP, ERBIN, KIAA1225, LAP2

Target/Specificity

This LAP2 antibody is generated from a mouse immunized with a recombinant protein of human LAP2.

Dilution

WB~~1:1000

E~~Use at an assay dependent concentration.

Format

Purified monoclonal antibody supplied in PBS with 0.09% (W/V) sodium azide. This antibody is purified through a protein G column, followed by dialysis against PBS.

Storage

Maintain refrigerated at 2-8°C for up to 2 weeks. For long term storage store at -20°C in small aliquots to prevent freeze-thaw cycles.

Precautions

LAP2 Antibody is for research use only and not for use in diagnostic or therapeutic procedures.

LAP2 Antibody - Protein Information**Name** ERBIN {ECO:0000303|PubMed:10878805}**Function** Acts as an adapter for the receptor ERBB2, in epithelia. By binding the unphosphorylated 'Tyr-1248' of receptor ERBB2, it may contribute to stabilize this unphosphorylated state (PubMed:[16203728](#)). Inhibits NOD2-dependent NF-kappa-B signaling and

pro-inflammatory cytokine secretion (PubMed:[16203728](#)).

Cellular Location

Cell junction, hemidesmosome. Nucleus membrane. Basolateral cell membrane. Note=Found in hemidesmosomes, which are cell-substrate adhesion complexes in stratified epithelia. In transfected cells, either diffusely distributed over the cytoplasm or concentrated at the basolateral membrane. Colocalizes with the adrenergic receptors, ADREN1A and ADREN1B, at the nuclear membrane of cardiac myocytes (By similarity).

Tissue Location

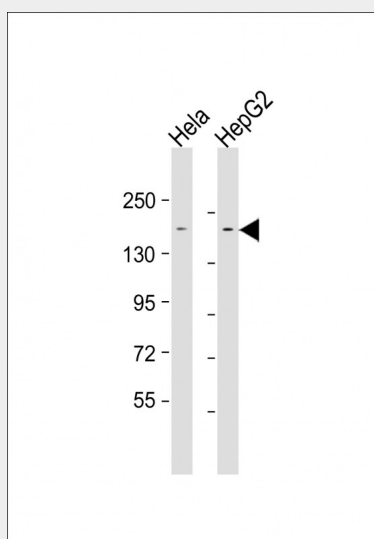
Highly expressed in brain, heart, kidney, muscle and stomach, followed by liver, spleen and intestine

LAP2 Antibody - Protocols

Provided below are standard protocols that you may find useful for product applications.

- [Western Blot](#)
- [Blocking Peptides](#)
- [Dot Blot](#)
- [Immunohistochemistry](#)
- [Immunofluorescence](#)
- [Immunoprecipitation](#)
- [Flow Cytometry](#)
- [Cell Culture](#)

LAP2 Antibody - Images



All lanes : Anti-LAP2 Antibody at 1:1000-1:2000 dilution Lane 1: HeLa whole cell lysate Lane 2: HepG2 whole cell lysate Lysates/proteins at 20 µg per lane. Secondary Goat Anti-mouse IgG, (H+L), Peroxidase conjugated at 1/10000 dilution. Predicted band size : 158 kDa Blocking/Dilution buffer: 5% NFDM/TBST.

LAP2 Antibody - Background

Acts as an adapter for the receptor ERBB2, in epithelia. By binding the unphosphorylated 'Tyr-1248' of receptor ERBB2, it may contribute to stabilize this unphosphorylated state.

LAP2 Antibody - References

Borg J.-P.,et al.Nat. Cell Biol. 2:407-414(2000).
Favre B.,et al.J. Biol. Chem. 276:32427-32436(2001).
Nagase T.,et al.DNA Res. 6:337-345(1999).
Nakajima D.,et al.DNA Res. 9:99-106(2002).
Ota T.,et al.Nat. Genet. 36:40-45(2004).