

**ETS1 Antibody**  
**Purified Mouse Monoclonal Antibody (Mab)**  
**Catalog # AM8521b****Specification**

---

**ETS1 Antibody - Product Information**

Application	WB, FC,E
Primary Accession	<a href="#">P14921</a>
Reactivity	Human
Host	Mouse
Clonality	monoclonal
Isotype	IgG2b,k
Calculated MW	50408

**ETS1 Antibody - Additional Information****Gene ID** 2113**Other Names**

Protein C-ets-1, p54, ETS1, EWSR2

**Target/Specificity**

This ETS1 antibody is generated from a mouse immunized with a recombinant protein of human ETS1.

**Dilution**

WB~~1:500

FC~~1:25

E~~Use at an assay dependent concentration.

**Format**

Purified monoclonal antibody supplied in PBS with 0.09% (W/V) sodium azide. This antibody is purified through a protein G column, followed by dialysis against PBS.

**Storage**

Maintain refrigerated at 2-8°C for up to 2 weeks. For long term storage store at -20°C in small aliquots to prevent freeze-thaw cycles.

**Precautions**

ETS1 Antibody is for research use only and not for use in diagnostic or therapeutic procedures.

**ETS1 Antibody - Protein Information****Name** ETS1**Synonyms** EWSR2**Function** Transcription factor (PubMed:[10698492](#), PubMed:[11909962](#)). Directly controls the

expression of cytokine and chemokine genes in a wide variety of different cellular contexts (PubMed:[20378371](#)). May control the differentiation, survival and proliferation of lymphoid cells (PubMed:[20378371](#)). May also regulate angiogenesis through regulation of expression of genes controlling endothelial cell migration and invasion (PubMed:[15247905](#), PubMed:[15592518](#)).

#### Cellular Location

Nucleus. Cytoplasm Note=Delocalizes from nucleus to cytoplasm when coexpressed with isoform Ets-1 p27.

#### Tissue Location

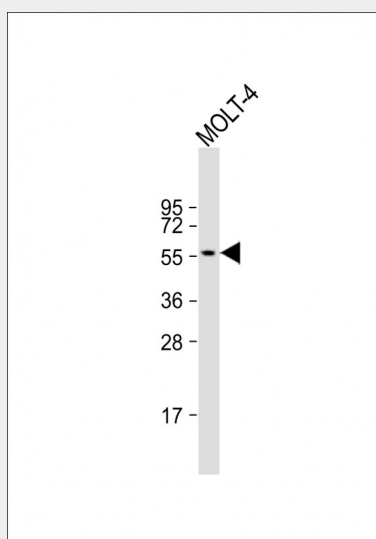
Highly expressed within lymphoid cells. Isoforms c- ETS-1A and Ets-1 p27 are both detected in all fetal tissues tested, but vary with tissue type in adult tissues. None is detected in brain or kidney.

### ETS1 Antibody - Protocols

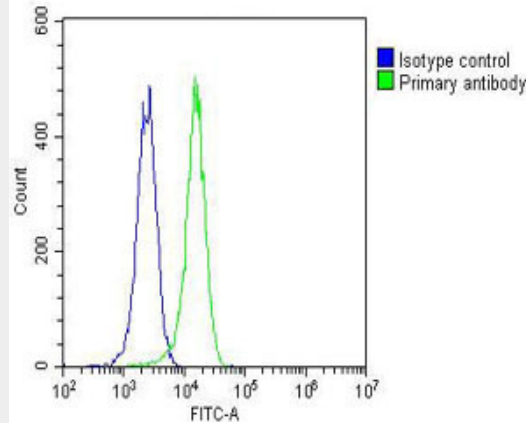
Provided below are standard protocols that you may find useful for product applications.

- [Western Blot](#)
- [Blocking Peptides](#)
- [Dot Blot](#)
- [Immunohistochemistry](#)
- [Immunofluorescence](#)
- [Immunoprecipitation](#)
- [Flow Cytometry](#)
- [Cell Culture](#)

### ETS1 Antibody - Images



Anti-ETS1 Antibody at 1:500 dilution + MOLT-4 whole cell lysate Lysates/proteins at 20 µg per lane. Secondary Goat Anti-mouse IgG, (H+L), Peroxidase conjugated at 1/10000 dilution. Predicted band size : 50 kDa Blocking/Dilution buffer: 5% NFDM/TBST.



Overlay histogram showing K562 cells stained with AM8521b (green line). The cells were fixed with 2% paraformaldehyde (10 min) and then permeabilized with 90% methanol for 10 min. The cells were then incubated in 2% bovine serum albumin to block non-specific protein-protein interactions followed by the antibody (AM8521b, 1:25 dilution) for 60 min at 37°C. The secondary antibody used was Goat-Anti-Mouse IgG, DyLight® 488 Conjugated Highly Cross-Adsorbed (OJ192088) at 1/200 dilution for 40 min at 37°C. Isotype control antibody (blue line) was mouse IgG2b (1 µg/1x10<sup>6</sup> cells) used under the same conditions. Acquisition of >10,000 events was performed.

### ETS1 Antibody - Background

Transcription factor. Directly controls the expression of cytokine and chemokine genes in a wide variety of different cellular contexts. May control the differentiation, survival and proliferation of lymphoid cells. May also regulate angiogenesis through regulation of expression of genes controlling endothelial cell migration and invasion.

### ETS1 Antibody - References

- Reddy E.S.P., et al. Oncogene Res. 3:239-246 (1988).
- Watson D.K., et al. Proc. Natl. Acad. Sci. U.S.A. 85:7862-7866 (1988).
- Laitem C., et al. Oncogene 28:2087-2099 (2009).
- Kalnina N., et al. Submitted (MAY-2003) to the EMBL/GenBank/DDBJ databases.
- Bechtel S., et al. BMC Genomics 8:399-399 (2007).