

**FAT1 Antibody**  
**Purified Mouse Monoclonal Antibody (Mab)**  
**Catalog # AM8531b****Specification**

---

**FAT1 Antibody - Product Information**

Application	WB,E
Primary Accession	<a href="#">Q14517</a>
Reactivity	Human
Host	Mouse
Clonality	monoclonal
Isotype	IgG1,k
Calculated MW	506273

**FAT1 Antibody - Additional Information****Gene ID** 2195**Other Names**

Protocadherin Fat 1, Cadherin family member 7, Cadherin-related tumor suppressor homolog, Protein fat homolog, Protocadherin Fat 1, nuclear form, FAT1, CDHF7, FAT

**Target/Specificity**

This FAT1 antibody is generated from a mouse immunized with a recombinant protein between 4203-4539 amino acids from human FAT1.

**Dilution**

WB~~1:2000

E~~Use at an assay dependent concentration.

**Format**

Purified monoclonal antibody supplied in PBS with 0.09% (W/V) sodium azide. This antibody is purified through a protein G column, followed by dialysis against PBS.

**Storage**

Maintain refrigerated at 2-8°C for up to 2 weeks. For long term storage store at -20°C in small aliquots to prevent freeze-thaw cycles.

**Precautions**

FAT1 Antibody is for research use only and not for use in diagnostic or therapeutic procedures.

**FAT1 Antibody - Protein Information****Name** FAT1**Synonyms** CDHF7, FAT**Function** [Protocadherin Fat 1]: Plays an essential role for cellular polarization, directed cell

migration and modulating cell-cell contact.

#### **Cellular Location**

[Protocadherin Fat 1]: Cell membrane; Single-pass type I membrane protein

#### **Tissue Location**

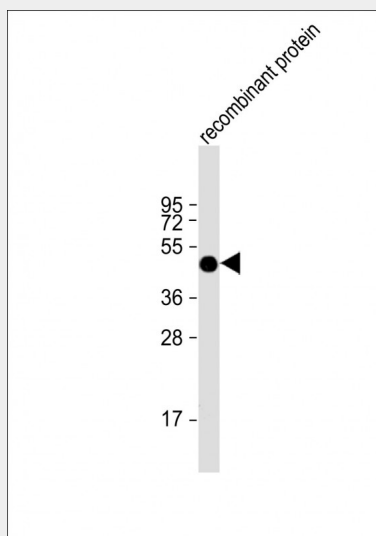
Expressed in many epithelial and some endothelial and smooth muscle cells

### **FAT1 Antibody - Protocols**

Provided below are standard protocols that you may find useful for product applications.

- [Western Blot](#)
- [Blocking Peptides](#)
- [Dot Blot](#)
- [Immunohistochemistry](#)
- [Immunofluorescence](#)
- [Immunoprecipitation](#)
- [Flow Cytometry](#)
- [Cell Culture](#)

### **FAT1 Antibody - Images**



Anti-FAT1 Antibody at 1:2000 dilution + recombinant protein Lysates/proteins at 20 µg per lane. Secondary Goat Anti-mouse IgG, (H+L), Peroxidase conjugated at 1/10000 dilution. Predicted band size : 506 kDa Blocking/Dilution buffer: 5% NFDM/TBST.

### **FAT1 Antibody - Background**

Plays an essential role for cellular polarization, directed cell migration and modulating cell-cell contact.

### **FAT1 Antibody - References**

Dunne J., et al. Genomics 30:207-223(1995).  
Hillier L.W., et al. Nature 434:724-731(2005).  
Magg T., et al. Exp. Cell Res. 307:100-108(2005).

Cantin G.T.,et al.J. Proteome Res. 7:1346-1351(2008).  
Hou R.,et al.J. Biol. Chem. 284:6955-6965(2009).