

**LRP1B Antibody**  
**Purified Mouse Monoclonal Antibody (Mab)**  
**Catalog # AM8536b****Specification**

---

**LRP1B Antibody - Product Information**

Application	WB,E
Primary Accession	<a href="#">O9NZR2</a>
Reactivity	Human
Host	Mouse
Clonality	monoclonal
Isotype	IgG1,k
Calculated MW	515498

**LRP1B Antibody - Additional Information****Gene ID** 53353**Other Names**

Low-density lipoprotein receptor-related protein 1B, LRP-1B, Low-density lipoprotein receptor-related protein-deleted in tumor, LRP-DIT, LRP1B, LRPDIT

**Target/Specificity**

This LRP1B antibody is generated from a mouse immunized with a recombinant protein between 2620-2891 amino acids from human LRP1B.

**Dilution**

WB~~1:2000

E~~Use at an assay dependent concentration.

**Format**

Purified monoclonal antibody supplied in PBS with 0.09% (W/V) sodium azide. This antibody is purified through a protein G column, followed by dialysis against PBS.

**Storage**

Maintain refrigerated at 2-8°C for up to 2 weeks. For long term storage store at -20°C in small aliquots to prevent freeze-thaw cycles.

**Precautions**

LRP1B Antibody is for research use only and not for use in diagnostic or therapeutic procedures.

**LRP1B Antibody - Protein Information****Name** LRP1B**Synonyms** LRPDIT**Function** Potential cell surface proteins that bind and internalize ligands in the process of

receptor-mediated endocytosis.

**Cellular Location**

Membrane; Single-pass type I membrane protein

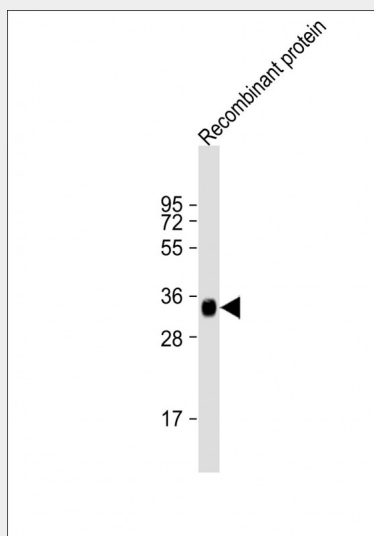
**Tissue Location**

Expressed in thyroid gland and in salivary gland, as well as in adult and fetal brain.

**LRP1B Antibody - Protocols**

Provided below are standard protocols that you may find useful for product applications.

- [Western Blot](#)
- [Blocking Peptides](#)
- [Dot Blot](#)
- [Immunohistochemistry](#)
- [Immunofluorescence](#)
- [Immunoprecipitation](#)
- [Flow Cytometry](#)
- [Cell Culture](#)

**LRP1B Antibody - Images**

Anti-LRP1B Antibody at 1:2000 dilution + Recombinant protein Lysates/proteins at 20 µg per lane. Secondary Goat Anti-mouse IgG, (H+L), Peroxidase conjugated at 1/10000 dilution. Predicted band size : 515 kDa Blocking/Dilution buffer: 5% NFDM/TBST.

**LRP1B Antibody - Background**

Potential cell surface proteins that bind and internalize ligands in the process of receptor-mediated endocytosis.

**LRP1B Antibody - References**

- Liu C.-X., et al. Cancer Res. 60:1961-1967(2000).  
Liu C.-X., et al. Genomics 69:271-274(2000).  
Liu C.-X., et al. J. Biol. Chem. 276:28889-28896(2001).

