

**PLIN3 Antibody**  
**Purified Mouse Monoclonal Antibody (Mab)**  
**Catalog # AM8538b**

## Specification

---

### PLIN3 Antibody - Product Information

Application	IF, WB,E
Primary Accession	<a href="#">O60664</a>
Reactivity	Human
Host	Mouse
Clonality	monoclonal
Isotype	IgG2a,k
Calculated MW	47075

### PLIN3 Antibody - Additional Information

**Gene ID** 10226

#### Other Names

Perilipin-3, 47 kDa mannose 6-phosphate receptor-binding protein, 47 kDa MPR-binding protein, Cargo selection protein TIP47, Mannose-6-phosphate receptor-binding protein 1, Placental protein 17, PP17, PLIN3, M6PRBP1, TIP47

#### Target/Specificity

This PLIN3 antibody is generated from a mouse immunized with a KLH conjugated synthetic peptide between 1-434 amino acids from human PLIN3.

#### Dilution

IF~~1:25

WB~~1:2000

#### Storage

Maintain refrigerated at 2-8°C for up to 2 weeks. For long term storage store at -20°C in small aliquots to prevent freeze-thaw cycles.

#### Precautions

PLIN3 Antibody is for research use only and not for use in diagnostic or therapeutic procedures.

### PLIN3 Antibody - Protein Information

**Name** PLIN3

**Synonyms** M6PRBP1, TIP47 {ECO:0000303|PubMed:95901

**Function** Structural component of lipid droplets, which is required for the formation and maintenance of lipid storage droplets (PubMed:[34077757](#)). Required for the transport of mannose 6-phosphate receptors (MPR) from endosomes to the trans-Golgi network (PubMed:[9590177](#)).

### Cellular Location

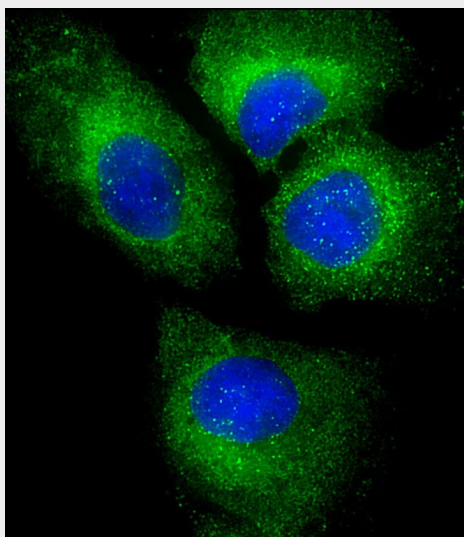
Lipid droplet. Endosome membrane; Peripheral membrane protein; Cytoplasmic side. Cytoplasm.  
Note=Membrane associated on endosomes (PubMed:15545278). Detected in the envelope and the core of lipid bodies and in lipid sails (PubMed:15545278)

### PLIN3 Antibody - Protocols

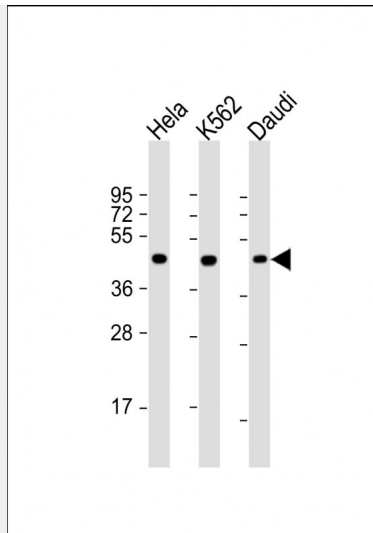
Provided below are standard protocols that you may find useful for product applications.

- [Western Blot](#)
- [Blocking Peptides](#)
- [Dot Blot](#)
- [Immunohistochemistry](#)
- [Immunofluorescence](#)
- [Immunoprecipitation](#)
- [Flow Cytometry](#)
- [Cell Culture](#)

### PLIN3 Antibody - Images



Immunofluorescent analysis of 4% paraformaldehyde-fixed, 0.1% Triton X-100 permeabilized U-2 OS (human osteosarcoma cell line) cells labeling PLIN3 with AM8538b at 1/25 dilution, followed by Dylight® 488-conjugated goat anti-mouse IgG (NA166821) secondary antibody at 1/200 dilution (green). Immunofluorescence image showing cytoplasm staining on U-2 OS cell line. The nuclear counter stain is DAPI (blue).



All lanes : Anti-PLIN3 Antibody at 1:2000 dilution Lane 1: HeLa whole cell lysate Lane 2: K562 whole cell lysate Lane 3: Daudi whole cell lysate Lysates/proteins at 20  $\mu$ g per lane. Secondary Goat Anti-mouse IgG, (H+L), Peroxidase conjugated at 1/10000 dilution. Predicted band size : 47 kDa Blocking/Dilution buffer: 5% NFDM/TBST.

#### **PLIN3 Antibody - Background**

Required for the transport of mannose 6-phosphate receptors (MPR) from endosomes to the trans-Golgi network.

#### **PLIN3 Antibody - References**

- Diaz E., et al. Cell 93:433-443(1998).
- Than N.G., et al. Eur. J. Biochem. 258:752-757(1998).
- Than N.G., et al. Tumor Biol. 20:184-192(1999).
- Kalnine N., et al. Submitted (MAY-2003) to the EMBL/GenBank/DDBJ databases.
- Ota T., et al. Nat. Genet. 36:40-45(2004).